

FILED  
RECEIVED

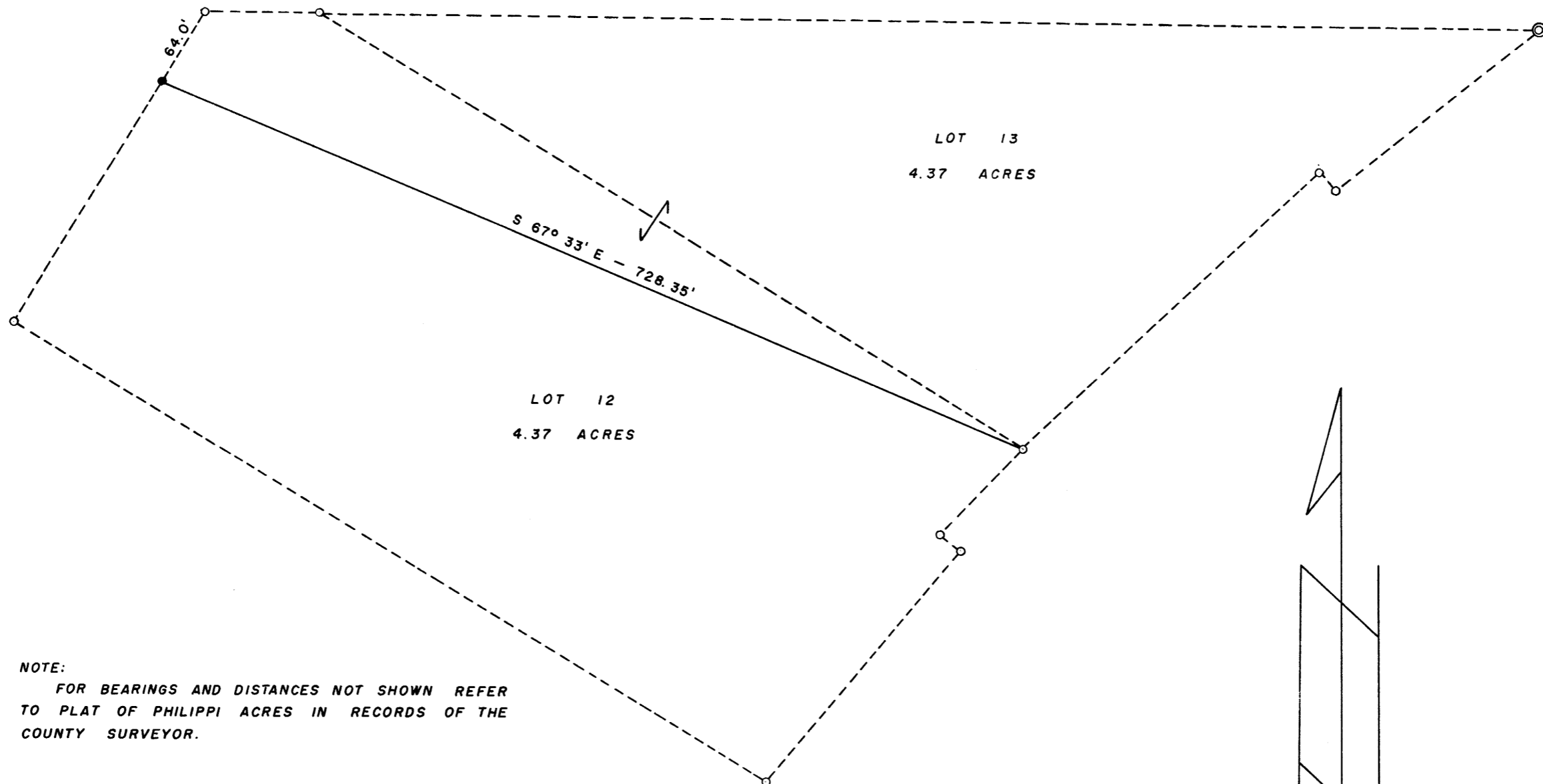
APR 27 1959

COUNTY SURVEYOR  
DOUGLAS COUNTY, ORE.

COUNTY SURVEYORS FILE DATA  
DO NOT REMOVE FROM OFFICE

# SURVEY OF LOTS 12 & 13, PHILIPPI ACRES SECTION 21, T 26 S, R 4 W, W.M. SURVEYED BY: G. R. LECKLIDER-ENG'R      APRIL 1959

- DENOTES CORNER FOUND
- DENOTES 5/8" ROD SET FOR CORNER
- ⊙ DENOTES INITIAL POINT FOUND



NOTE:  
FOR BEARINGS AND DISTANCES NOT SHOWN REFER  
TO PLAT OF PHILIPPI ACRES IN RECORDS OF THE  
COUNTY SURVEYOR.



DONE FOR WALLACE D. ANDERSON AND WM. GRAHAM

MAP FILE M 14-43