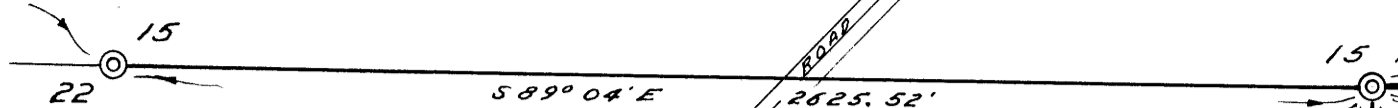


FOUND PIPE AT 1/4 CORNER SECTION 22 T27S, R4W



RENEW SECTION CORNER 22/23 NO ORIGINAL B.T.C. FOUND. SET BRASS CAP AT CORNER MARKED COUNTY SURVEYORS OFFICE 1959 1/4 SEC. 22 T27S, R4W. NEW B.T.S.: 32" CEDAR N 90° 26' S Scribed S 1/4 T27S, R4W C.S. BT. 40" CEDAR N43° E S 27.7' Scribed S 1/4 T27S, R4W C.S. BT. 34" B. OAK, BEARS S 89° 04' E 135.4' Scribed S 23 T27S, R4W C.S. BT. SEE NOTE!

FOUND 3/4" IRON W 1/4 S 1/4 T27S, R4W 223 0.12' NORTH OF LINE S 89° 25' E 1329.10' 2636.07' 1792.00'

RENEW 1/4 CORNER 23/24 NO ORIGINAL B.T.S. FOUND. SET BRASS CAP AT CORNER MARKED COUNTY SURVEYORS OFFICE 1959 1/4 SEC. 23 T27S, R4W. NEW B.T.S.: 4" A. FIR BEARS N 113° 05' 40.8' Scribed 1/4 S 1/4 T27S, R4W C.S. BT. 12" B. OAK, BEARS S 89° 04' E 1317.07' 1/4 S 23 C.S. BT. SEE NOTE!

RENEW SECTION CORNER 23/24: FOUND STONE AT CORNER AS RECORDED & BOTH B.T.S. NOW STUMPS, SHOW GOOD SCARS, DO NOT OPEN NEW B.T.S.: 28" CEDAR BEARS N 83° W 43.2' Scribed S 1/4 T27S, R4W C.S. BT. 30" RED FIR BEARS S 85° W 27.0' Scribed S 23 T27S, R4W C.S. BT.

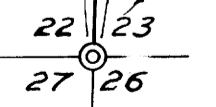
SET 3/4" IRON AT E 1/4 S 1/4 T27S, R4W. FOUND 1" FIR NOW 2", GOOD BARK SCRIBING "CS S 1/4 T27S, R4W" 11.9' 36" CEDAR STUMP, NEST 40.3' SHOWS SCAR, NEW B.T.: 30" B. FIR, BEARS N 83° W Scribed E 1/4 S 1/4 T27S, R4W C.S. BT.

RENEW SECTION CORNER 23/24: FOUND BRASS CAP AT CORNER & 30" FIR STUMP SHOWS SCAR, DO NOT OPEN, S 63° E 22.8' NEW B.T.S.: 36" CEDAR, BEARS N 89° W 29.2' Scribed S 1/4 T27S, R4W C.S. BT.

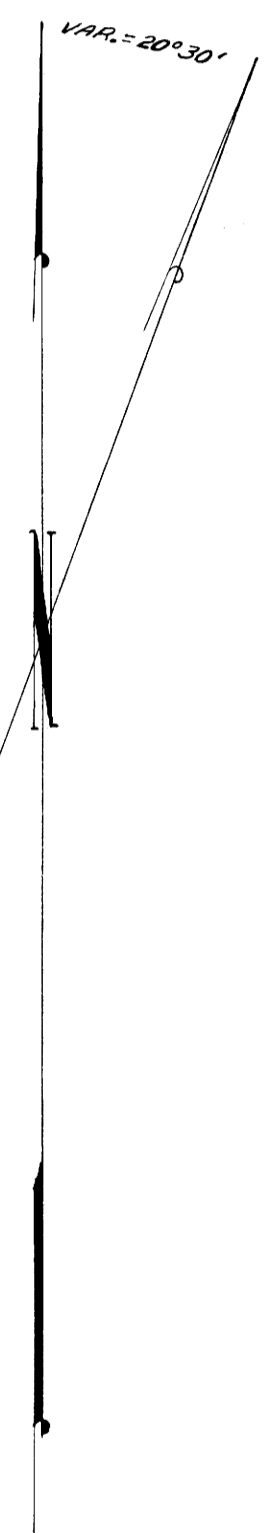
NOTE: THE SECTION CORNER TO SECTION 14, 15, 22 & 23 WAS RENEWED & SET BASED ON SINGLE PROPORTION BETWEEN THE 1/4 COR. SEC. 15 & 22 & THE SEC. COR. TO SEC. 14 & 23 AS THERE IS NO CORNERS TO THE NORTH WITHIN A REASONABLE DISTANCE. THIS CORNER ALSO SATISFIES THE CALL TO A SMALL CREEK AS SHOWN ABOVE & CALLED FOR BY G.L.O. NOTES THE 1/4 COR. SEC. 14 & 23 WAS RENEWED & SET BY PROPORTION & HALF WAY BETWEEN THE SECTION CORNERS. THIS ALSO APPLIES TO THE 1/4 COR. SEC. 22 & 23.

RENEW 1/4 CORNER 22/23, NO ORIGINAL B.T.S. FOUND. SET BRASS CAP AT CORNER MARKED COUNTY SURVEYORS OFFICE 1959 1/4 SEC. 22 T27S, R4W. NEW B.T.S.: 5" A. FIR 57° 45' 52.1' Scribed 1/4 S 23 C.S. BT. 12" A. FIR N 46° 54' 20" Scribed 1/4 S 22 C.S. BT. SEE NOTE!

FOUND SECTION CORNER 22/23 ROCK WITH X ON TOP



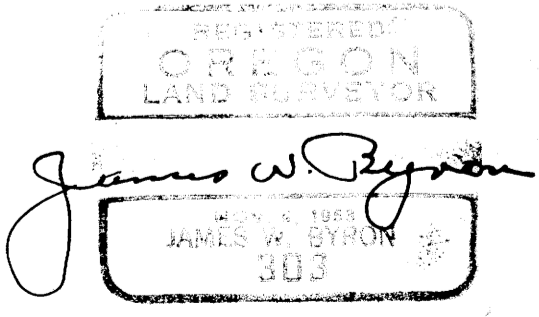
NOTE: BEARINGS SHOWN ARE MAGNETIC, BASED ON NORTH BETWEEN THE C.C. SEC. 1/2 24 & C.C. SEC. 1/2 23.



COUNTY SURVEYOR'S OFFICE DOUGLAS COUNTY, OREGON

SURVEY TO RENEW SEC. CORNERS SECTION 23, T27S., R4W, W.M.

FRED M. DARBY COUNTY SURVEYOR SURVEYED MAR. & APRIL 1959 BY JAMES W. BYRON - DEPUTY SCALE 1" = 400' SURVEYED FOR DOUGLAS COUNTY



COUNTY SURVEYORS FILE DATA DO NOT REMOVE FROM OFFICE

C.S. FILE 49/176 M 14-42

C.S. FILE 49/176 M 14-42

CS FILE FOLDER

CONTAINS

MORE

INFORMATION