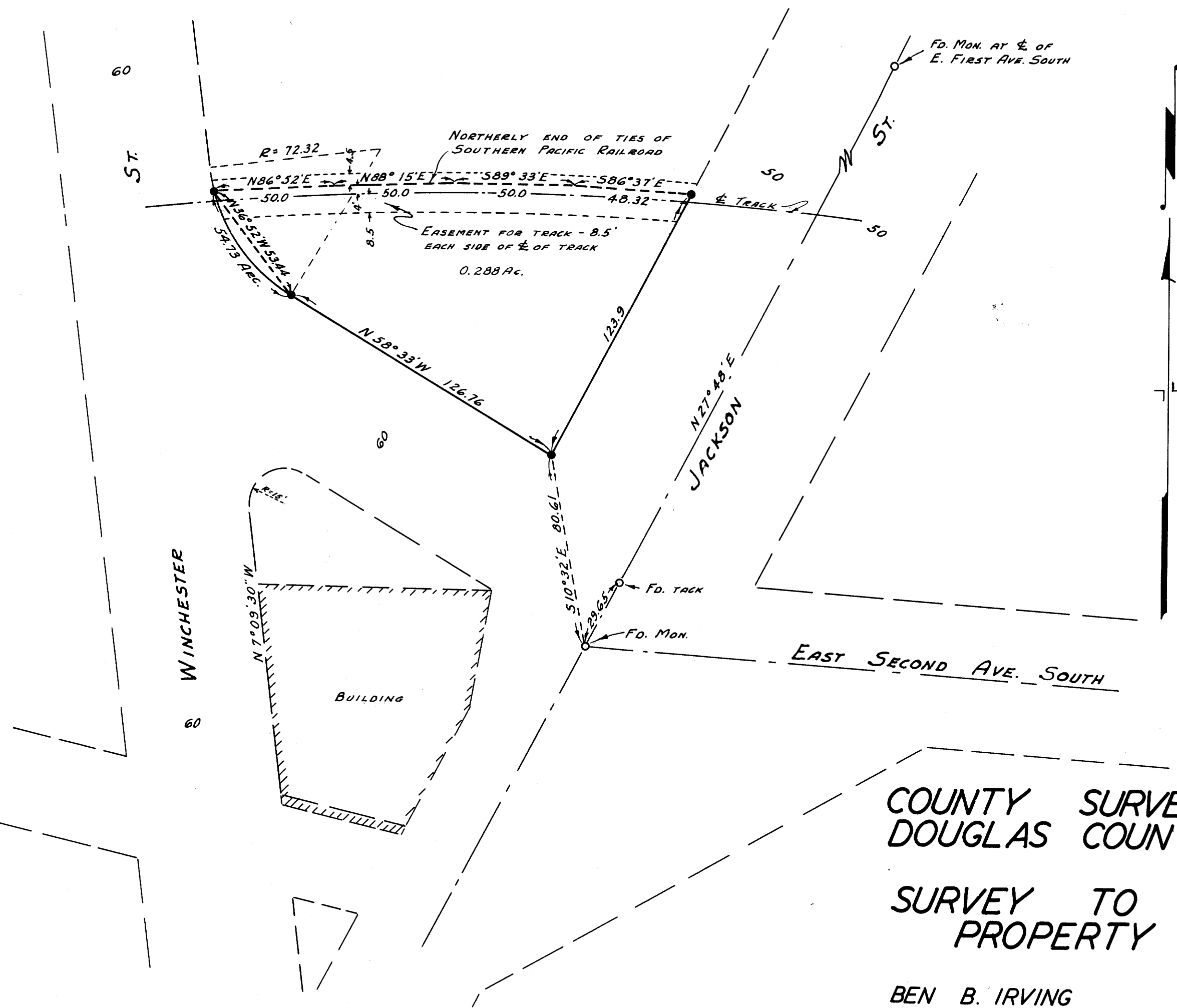
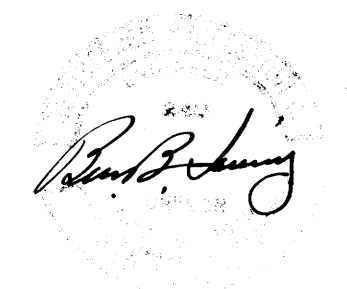


PROPERTY SURVEYING FIELD DATA
DO NOT REMOVE FROM OFFICE



● = 3/4" ROD SET IN CONCRETE.
 BEARINGS SHOWN ARE BASED ON OREGON STATE HIGHWAY DEPT. BEARINGS.



COUNTY SURVEYOR'S OFFICE
 DOUGLAS COUNTY, OREGON

SURVEY TO ESTABLISH
 PROPERTY CORNERS.

BEN B. IRVING COUNTY SURVEYOR
 SURVEYED JUNE 19, 20, 1953 SCALE 1" = 40'