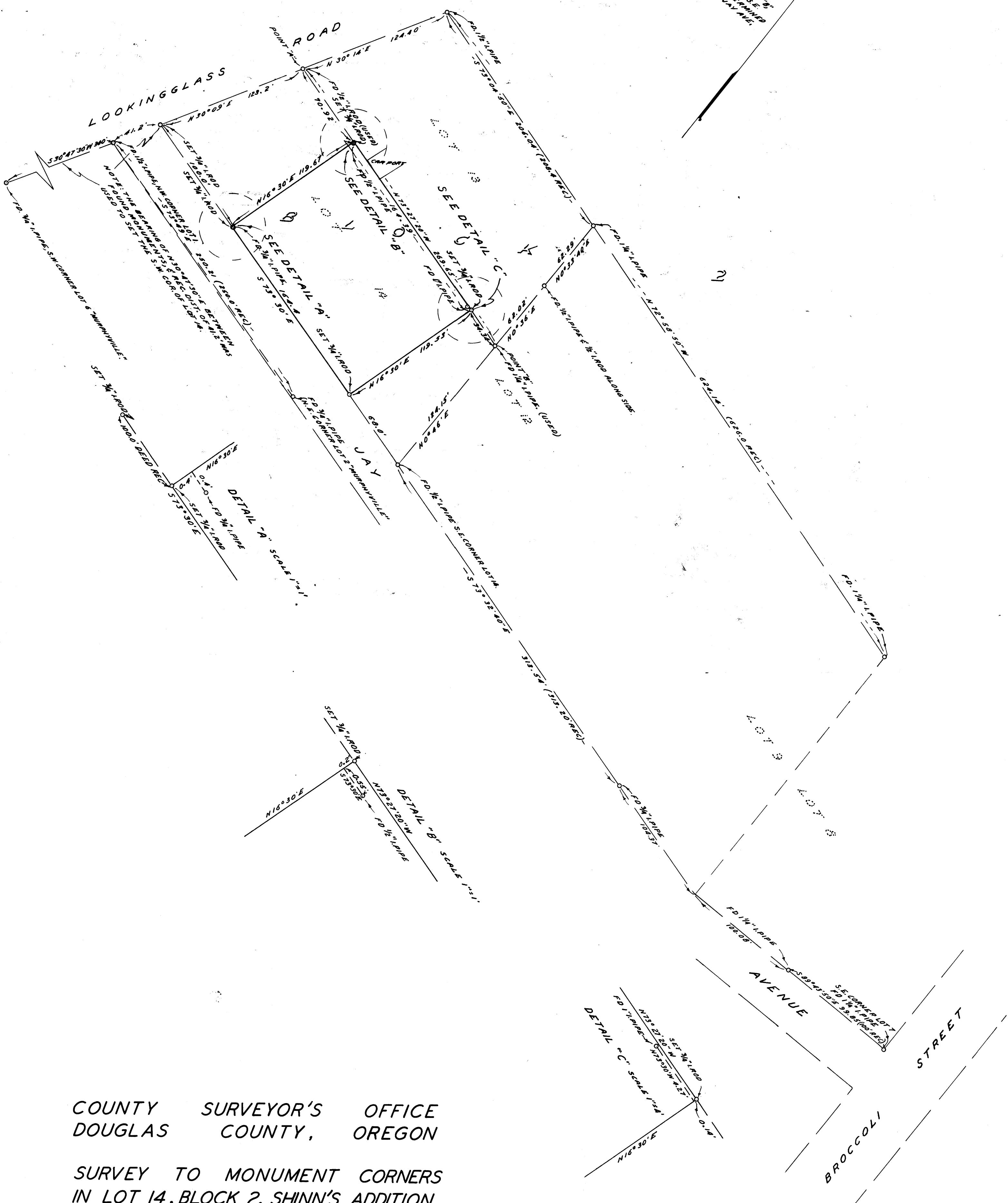


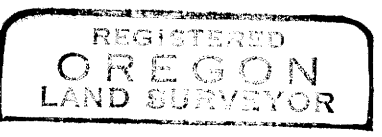
NOTE: BEARINGS BASED ON S 73° 30' E REC ALONG
JAY AVENUE.
THE SE CORNER & SW CORNER WERE SET
FOR THE ALICES PROPERTY BY USING THE CORNER
FOR THE ALICES TRACES THE CORNER MARKER POSITION
ON LOT 14. THIS WAS SET BY USING THE INTERSECTION
OF THE NORTH LINE OF LOTS 14 & 15 WITH THE SE LINE
DETERMINED BY A LINE RUNNING N 6° 30' E FROM THE
SW CORNER OF LOTS 14 & 15 PROPERLY AS DETERMINED
BY USING RECTANGLES FROM DEEDS ON JAY AVE.



COUNTY SURVEYOR'S OFFICE
DOUGLAS COUNTY, OREGON

SURVEY TO MONUMENT CORNERS
IN LOT 14, BLOCK 2, SHINN'S ADDITION
ROSEBURG OREGON

FRED M. DARBY COUNTY SURVEYOR
SURVEYED MAR. 20, 1959 BY
JAMES W. BYRON - DEPUTY SCALE 1" = 50'
SURVEYED FOR RUTH HALE



JAMES W. BYRON
NOV. 9, 1953
JAMES W. BYRON
383

COUNTY SURVEYORS FILE DATA
DO NOT REMOVE FROM OFFICE

CS FILE FOLDER

CONTAINS

MORE

INFORMATION