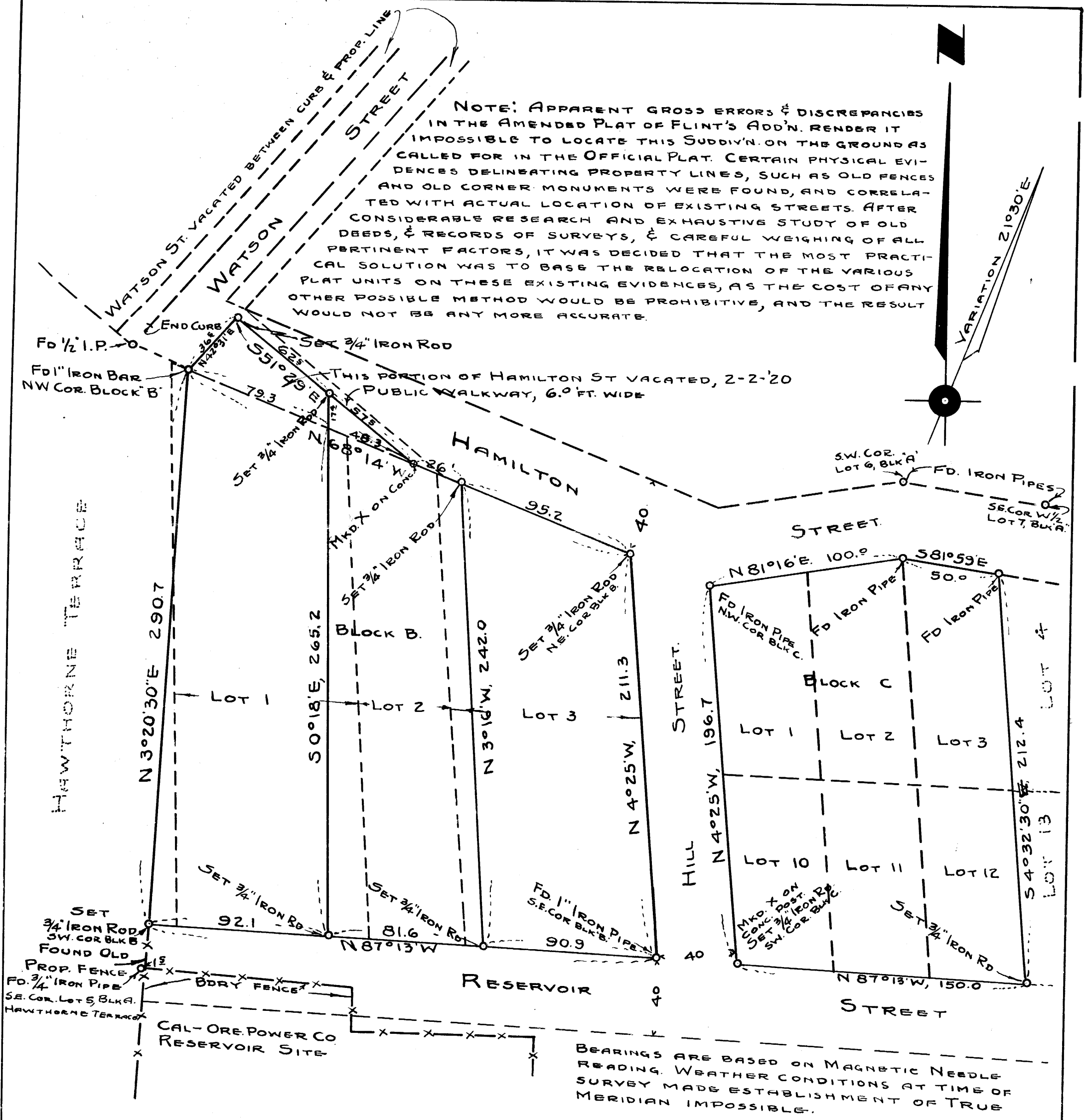
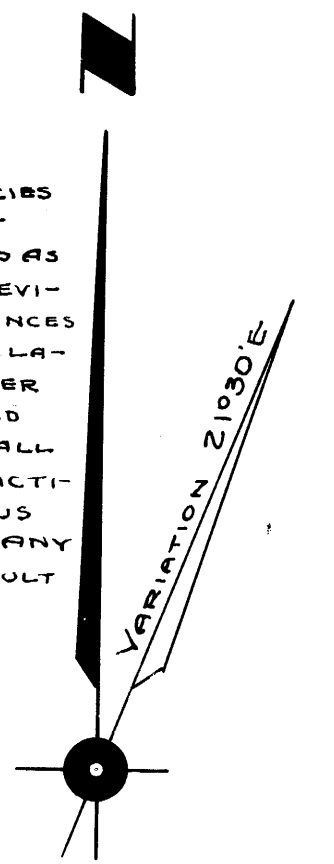
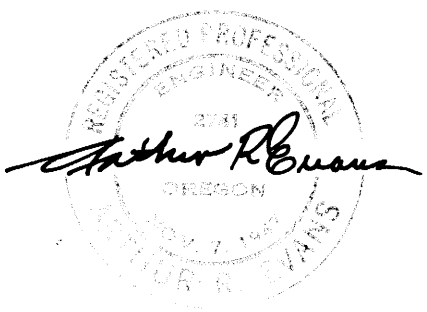


NOTE: APPARENT GROSS ERRORS & DISCREPANCIES IN THE AMENDED PLAT OF FLINT'S ADD'N. RENDER IT IMPOSSIBLE TO LOCATE THIS SUDDIV'N. ON THE GROUND AS CALLED FOR IN THE OFFICIAL PLAT. CERTAIN PHYSICAL EVIDENCES DELINEATING PROPERTY LINES, SUCH AS OLD FENCES AND OLD CORNER MONUMENTS WERE FOUND, AND CORRELATED WITH ACTUAL LOCATION OF EXISTING STREETS. AFTER CONSIDERABLE RESEARCH AND EXHAUSTIVE STUDY OF OLD DEEDS, & RECORDS OF SURVEYS, & CAREFUL WEIGHING OF ALL PERTINENT FACTORS, IT WAS DECIDED THAT THE MOST PRACTICAL SOLUTION WAS TO BASE THE RELOCATION OF THE VARIOUS PLAT UNITS ON THESE EXISTING EVIDENCES, AS THE COST OF ANY OTHER POSSIBLE METHOD WOULD BE PROHIBITIVE, AND THE RESULT WOULD NOT BE ANY MORE ACCURATE.



**COUNTY SURVEYOR'S OFFICE  
DOUGLAS COUNTY OREGON  
SURVEY TO ESTABLISH CORNERS  
AND BOUNDARIES, BLOCK "B" &  
LOTS 1-2-3-10-11-12, BLOCK "C"  
AMENDED PLAT, FLINT'S ADD'N TO R'S B'G**

BEN B. IRVING COUNTY SURVEYOR  
SURVEYED & PLATTED, NOV.-DEC. 49, BY  
A.R. EVANS, DEP. COUNTY SURVEYOR  
SCALE 1" = 50'



COUNTY SURVEYORS FILE DATA  
DO NOT REMOVE FROM OFFICE