

COUNTY SURVEYORS FILE DATA
DO NOT REMOVE FROM OFFICE

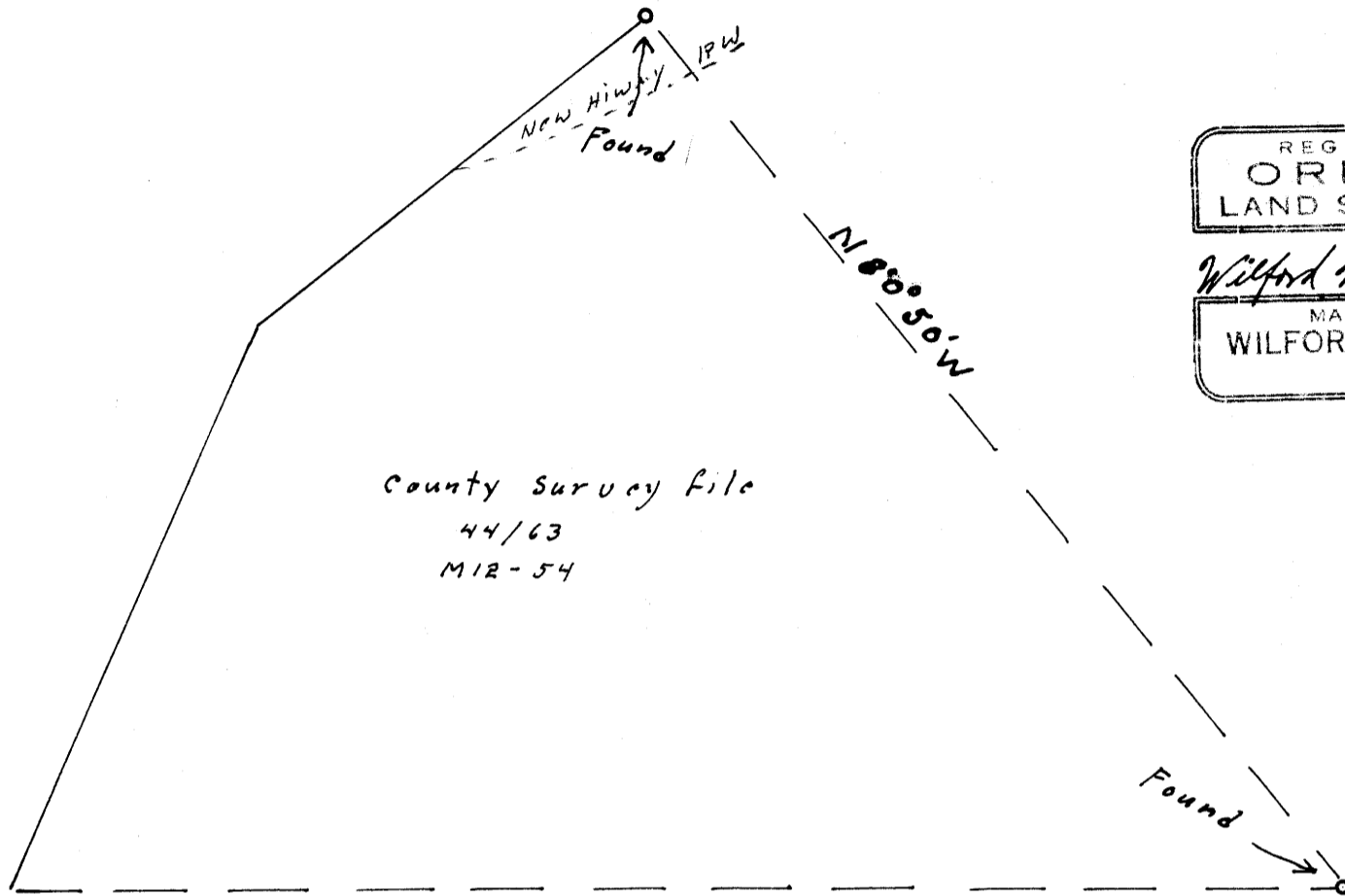
Sect. 28, T23S., R5W. W.M.

Survey for Deed Description

Scale 1" = 50'

Feb. 1959

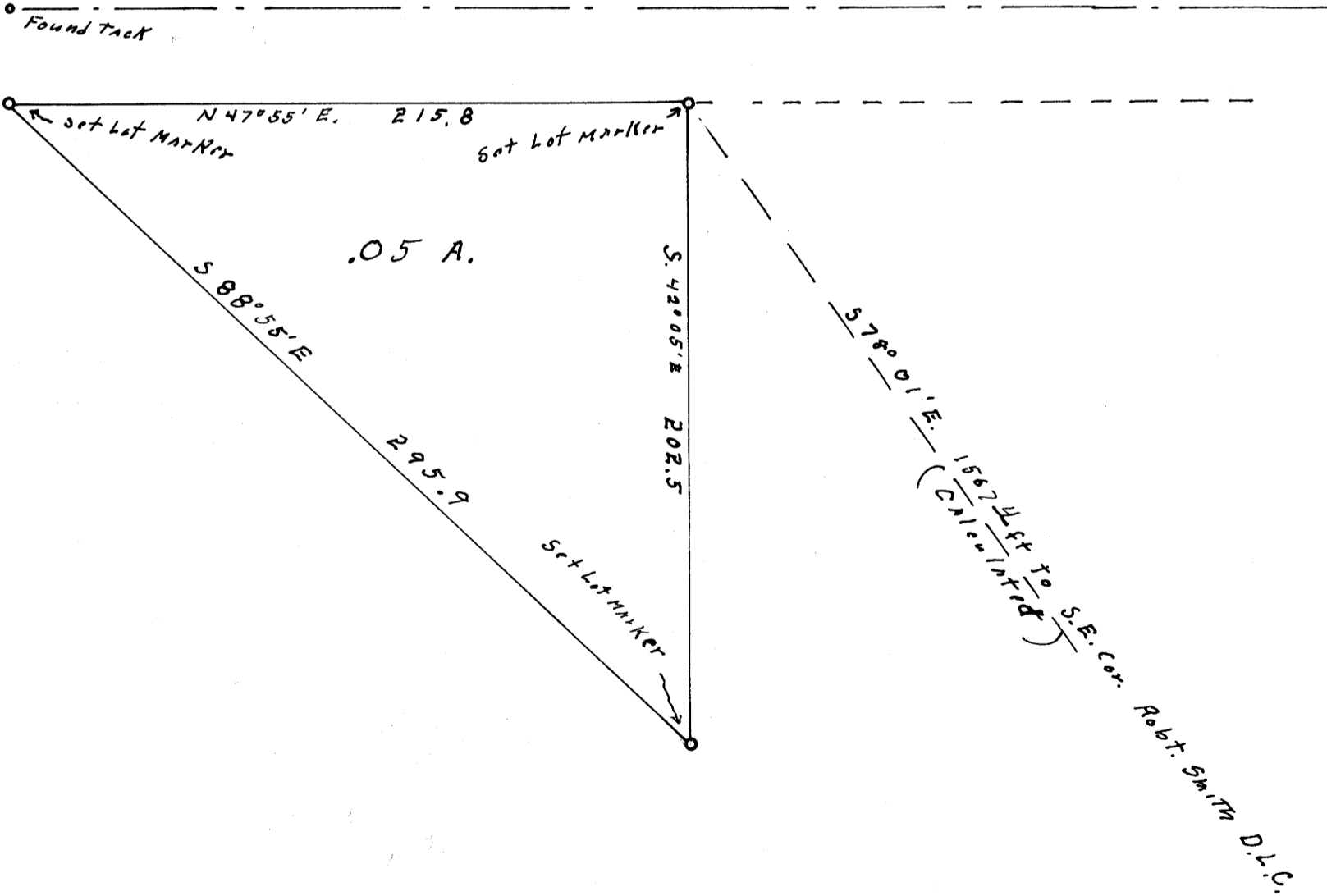
For Frank Daggs



REGISTERED
OREGON
LAND SURVEYOR

Wilford M. Haines

MAY 7, 1948
WILFORD N. HAINES
239



FILED *RS*
RECEIVED

FEB 6 1959

COUNTY SURVEYOR
DOUGLAS COUNTY, ORE.