

RECEIVED

MAP

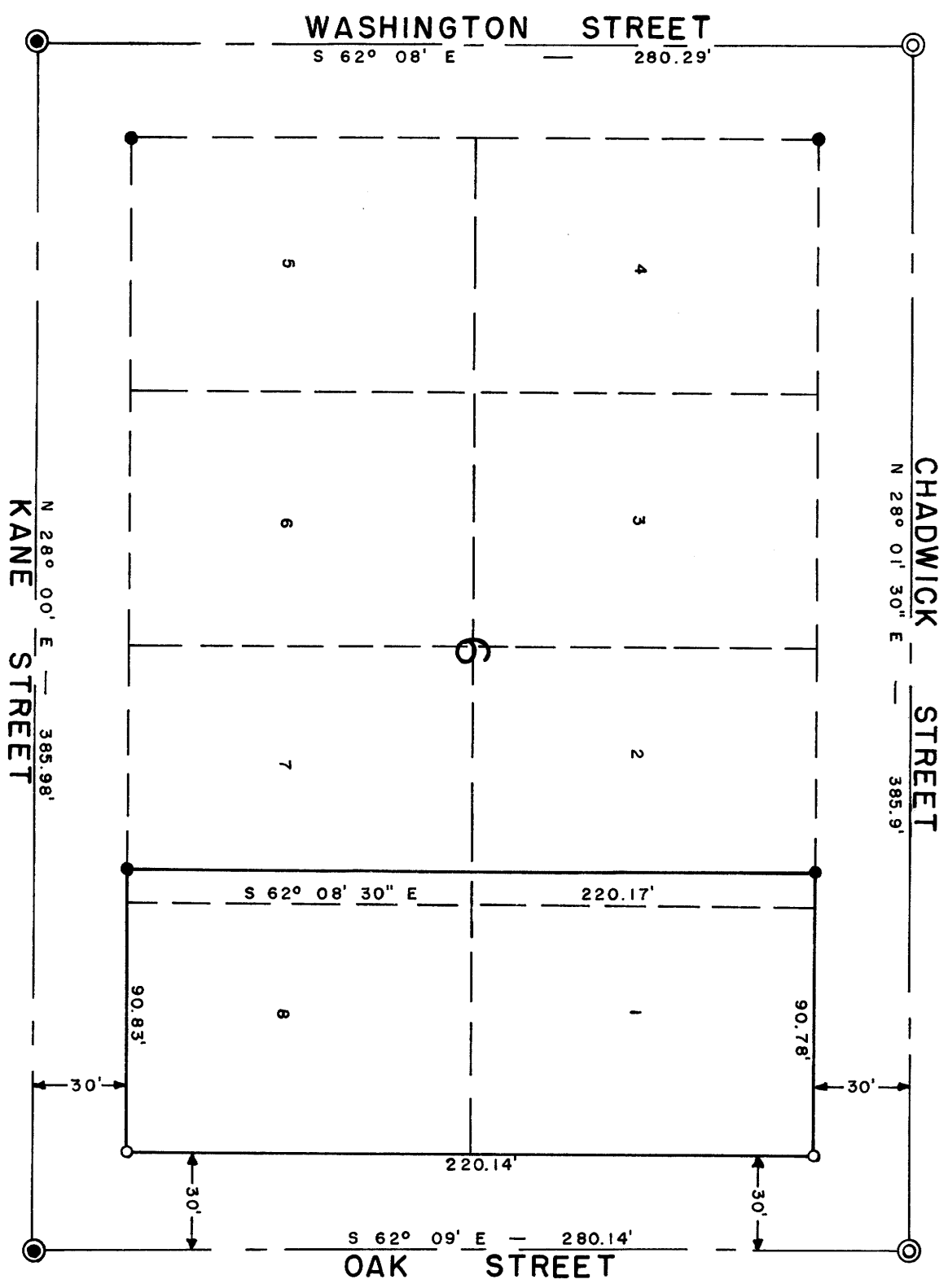
COUNTY SUPERVISOR
DONALD G. SMITH, DAE

COUNTY SUPERVISOR'S FILE DATA
DO NOT REMOVE FROM OFFICE

SURVEY TO ESTABLISH PROPERTY CORNERS IN LOTS 1, 2, 7, 8, BLOCK 26, ROSEBURG, OREGON

SURVEYED FOR: FIRST NATIONAL BANK OF ROSEBURG
SURVEYED BY: G. R. LECKLIDER — ENGINEER
FEBRUARY, 1959
SCALE: 1" = 50'

- DENOTES MONUMENT FOUND
- DENOTES CORNER FOUND
- ⊙ DENOTES TACK FOUND
- DENOTES CORNER SET



NOTE: Survey based on control used in survey CS File 49/23.

REGISTERED PROFESSIONAL ENGINEER
4079
G. R. Lecklider
OREGON
EXPIRES OCT. 15, 1956