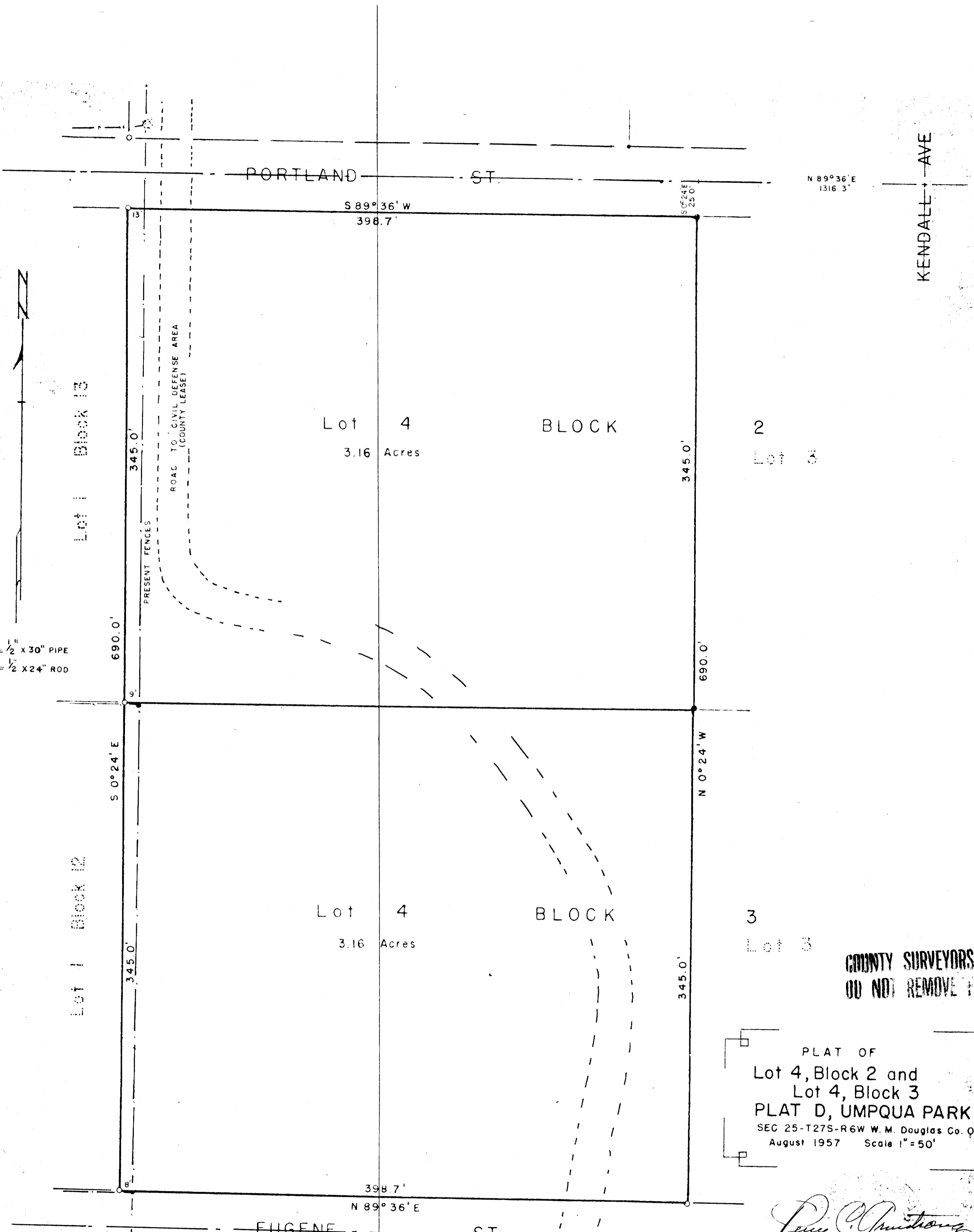


8/19 S.S.  
M 14-15  
51-11 W



○ = 1/2" x 30" PIPE  
 ● = 1/2" x 24" ROD

**COUNTY SURVEYORS FILE DATA  
 DO NOT REMOVE FROM OFFICE**

PLAT OF  
 Lot 4, Block 2 and  
 Lot 4, Block 3  
**PLAT D, UMPQUA PARK**  
 SEC 25-T27S-R6W W. M. Douglas Co. Ore.  
 August 1957 Scale 1" = 50'

*Percy A. Smith*  
 COUNTY SURVEYOR  
 DOUGLAS COUNTY, OREGON

FILED *pp*  
 RECEIVED  
 FEB 27 1959  
 COUNTY SURVEYOR  
 DOUGLAS COUNTY ORE

C.S. File 51-8

DESCRIPTION OF SURVEY

Beginning at a 1/2" x 24" rod on the Southerly boundary of Portland Street from which the intersection of Portland and Kendall Streets bears N 89° 36' E 1316.3 ft., and N 0° 24' W 25.0 ft, said beginning point being the N.E. Corner of Lot 4, Block 2, Plat D, Umpqua Park, in Sec. 25 - T 27 S - R 6 W, W.M. in Douglas County, Oregon. Thence from said beginning point S 89° 36' W 398.7 ft along the southerly boundary of Portland Street to the N.W. Corner of aforesaid Lot 4, thence S 0° 24' E 345.0 ft to the S.W. Corner of aforesaid Lot 4 and the N.W. Corner of Lot 4, Block 3, thence continuing S 0° 24' E 345.0 ft to the S.E. Corner of Lot 4, Block 3 on the northerly boundary of Eugene Street, thence N 89° 36' E 398.7 ft along said street boundary to the S.E. Corner of Lot 4, Block 3, thence N 0° 24' W 345.0 ft to the N.E. Corner of said Lot 4, Block 3, and N 0° 24' W 345.0 ft to the place of beginning.

The tracts described being Lot 4, Block 2, and Lot 4, Block 3, Plat "D", Umpqua Park, and containing 3.16 acres each, more or less.

Alvin Luellen survey  
August, 1957



FILED *LL*  
RECEIVED

FEB 27 1959

COUNTY SURVEYOR  
DOUGLAS COUNTY, ORE.

C.S. File 5118

Map File M. 191-15