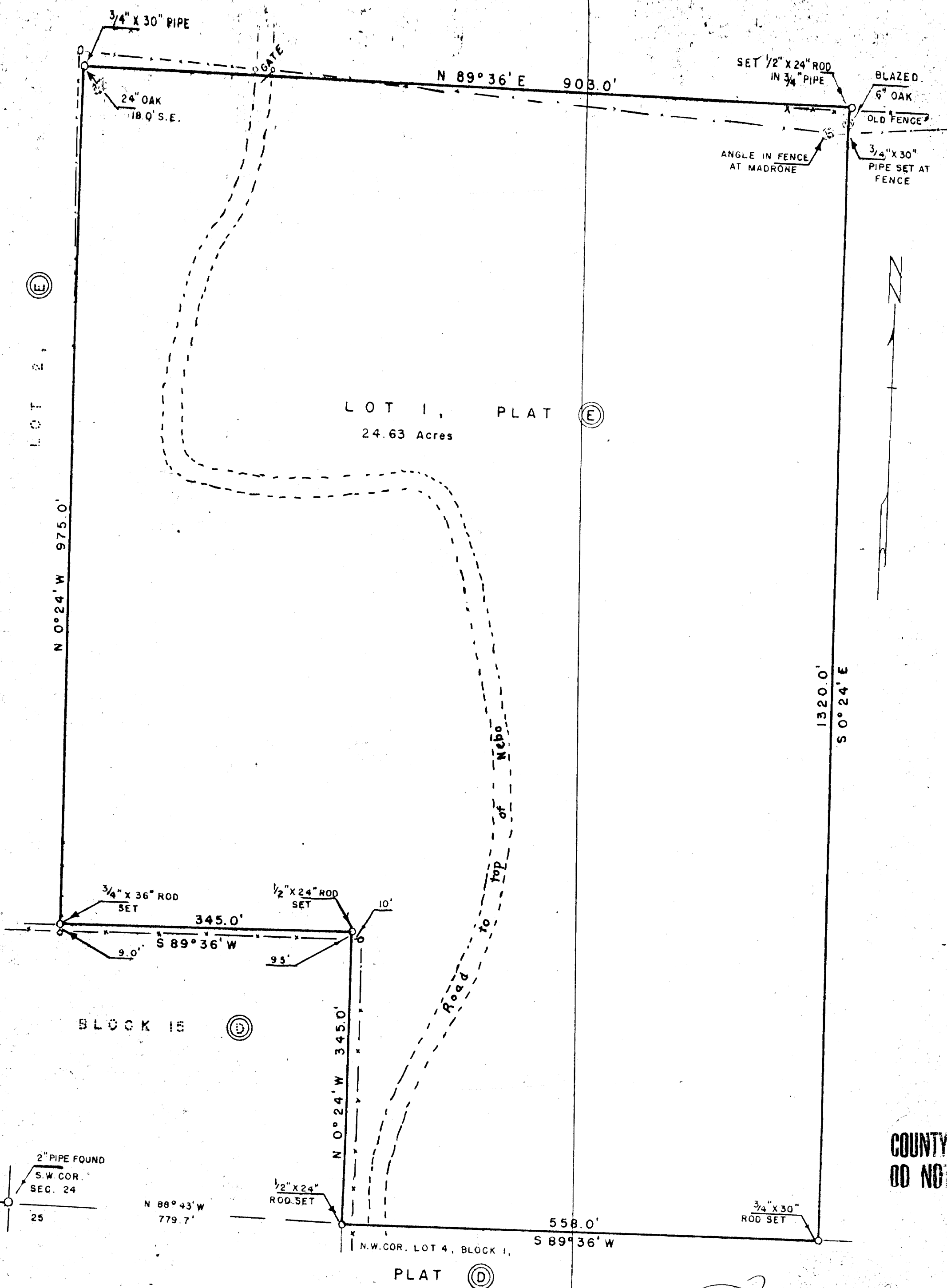


41-41 W
L/15 S.2



LOT 2, (E)

LOT 1, PLAT (E)
24.63 Acres

N 0° 24' W 975.0'

1320.0'
S 0° 24' E

BLOCK 15 (D)

PLAT OF
LOT 1, PLAT (E), UMPQUA PARK,

T 27 S - R 6 W W.M. DOUGLAS CO., ORE.
January 1959 Scale 1" = 100'

COUNTY SURVEYORS FILE DATA
DO NOT REMOVE FROM OFFICE

Percy Christy

FILED
RECEIVED
FEB 27 1959

COUNTY SURVEYOR
DOUGLAS COUNTY, ORE

C.S. 51/7
M 14-14

C.S. 51/7

M 14-14

DESCRIPTION OF SURVEY

Beginning at a 1/2" x 24" iron rod set at the N.W. Corner of Lot 4, Block 1 of Plat "D" of Umpqua Park and from which a 2" pipe at the S.W. Corner of Sec. 24 - T 27 S - R 6 W, W.M. in Douglas County, Oregon bears N 88° 43' W 779.7 ft., thence from said beginning point N 0° 24' W 345.0 ft. to the N.E. Corner of Block 15 of the aforesaid Plat "D", thence S 89° 36' W 345.0 ft. to the S.E. Corner of Lot 2 of Plat "E" of the aforesaid Umpqua Park, thence N 0° 24' W 975.0 ft along the Easterly boundary of said Lot 2, Plat "E", thence N 89° 36' E 903.0 ft., thence S 0° 24' E 1320.0 ft. to the northerly boundary of the aforesaid Plat "D", Umpqua Park, thence along said northerly boundary of Plat "D" S 89° 36' W 558.0 ft to the place of beginning, containing 24.63 acres more or less.

The tract described being Lot 1 of Plat "E", Umpqua Park.

Cecil Luellen survey
January, 1959



FILED
RECEIVED

FEB 27 1959

COUNTY SURVEYOR
DOUGLAS COUNTY, ORE.

C.S. File 51-1-2

Map File M14-114