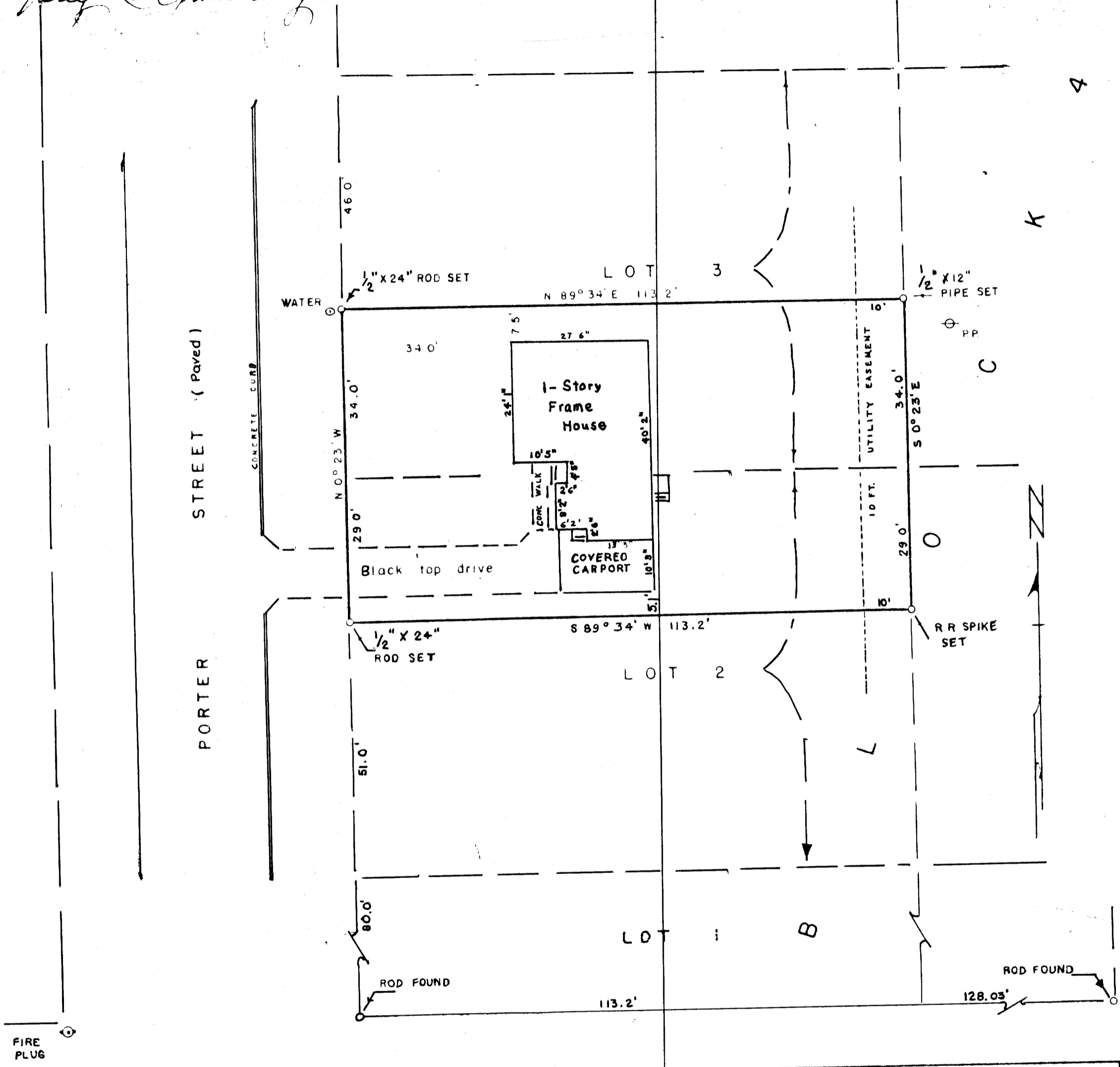


Jerry J. Armstrong



NEWTON CREEK ROAD

PLAT OF
 NORTH 29 FT. OF LOT 2
 AND
 SOUTH 34 FT. OF LOT 3
 BLOCK 4
 NEWTON CREEK HOMESITES
 SEG 6-T27S-R5W W.M. Douglas Co., Ore.
 FEBRUARY 1959 SCALE 1"=20'

FILED *pp*
RECEIVED

FEB 27 1959

COUNTY SURVEYOR
DOUGLAS COUNTY, ORE.

COUNTY SURVEYORS FILE DATA
DO NOT REMOVE FROM OFFICE