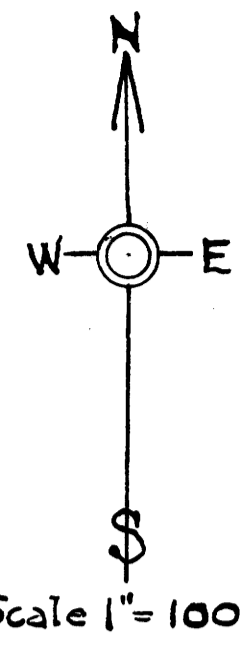


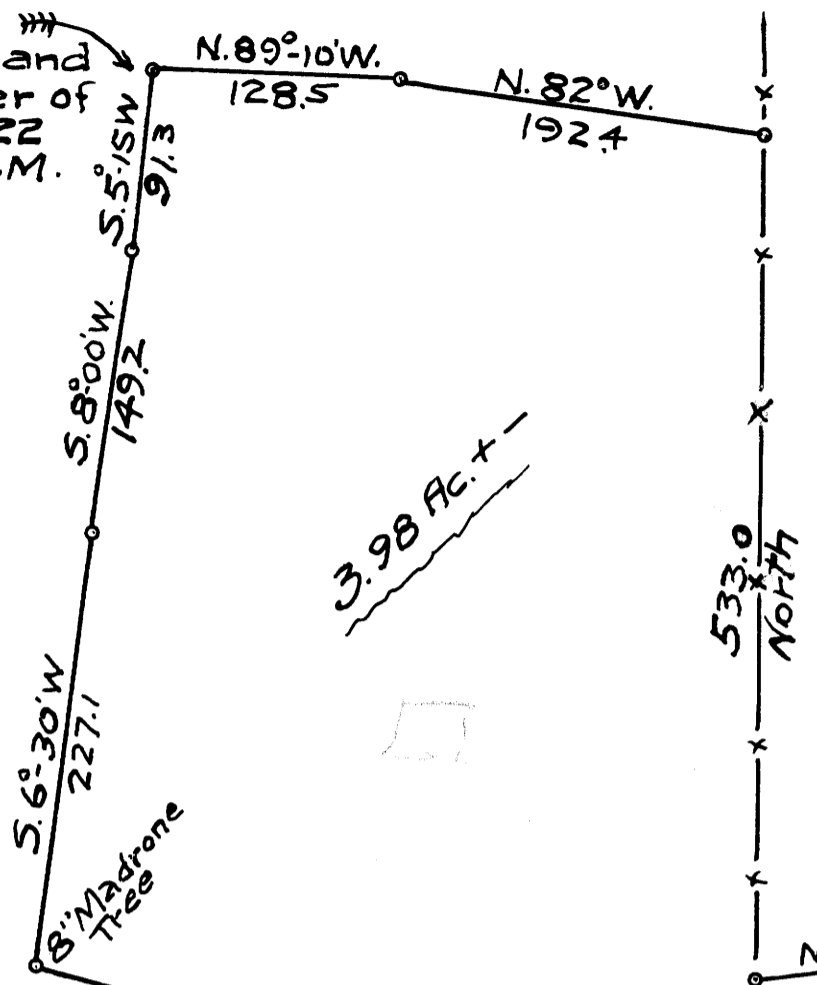
FILED *LL*  
RECEIVED  
FEB 1 1959  
COUNTY SURVEYOR  
DOUGLAS COUNTY, ORE.



MAP OF FRED BOYER JR. LAND &  
ROAD SURVEY IN SECT. 15-T.27S.  
R.5W.-W.M.-DOUGLAS Co.-ORE.  
F.C. Frear Eng'r. Sept. 1958  
LAND EXCHANGE

COUNTY SURVEYORS FILE DATA  
DO NOT REMOVE FROM OFFICE

Beg. Pt. 2306' East and  
1294' North of Corner of  
Sections 15-16-21 & 22  
T.27S.-R.5W.-W.M.



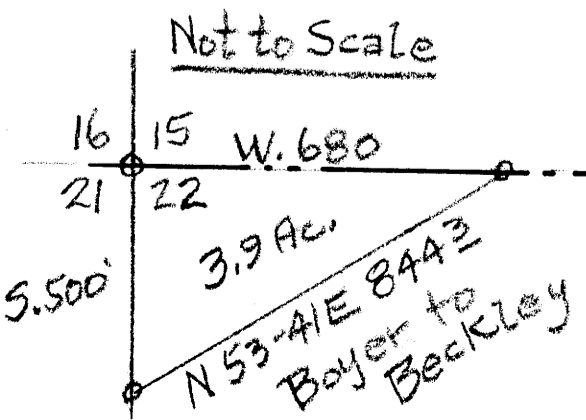
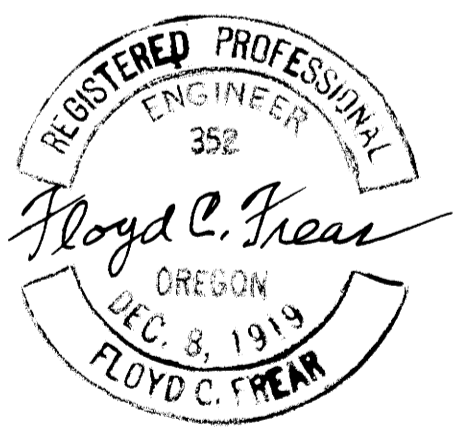
Beckley to Boyer

SW 1/4 SECT. 15

SE 1/4 SECT. 15

DEER CREEK

Roseburg Co. Road A



N.82°E. 117.8

S.42°E. 160.8

S.1°15'E. 161.3

S.23°15'E. 161.3

Access Road S.38°50'E. 160.1

Road S.66°E. 160.3

N.89°E. 160.8

N.74°E. 162.0

N.60°15'E. 203.2