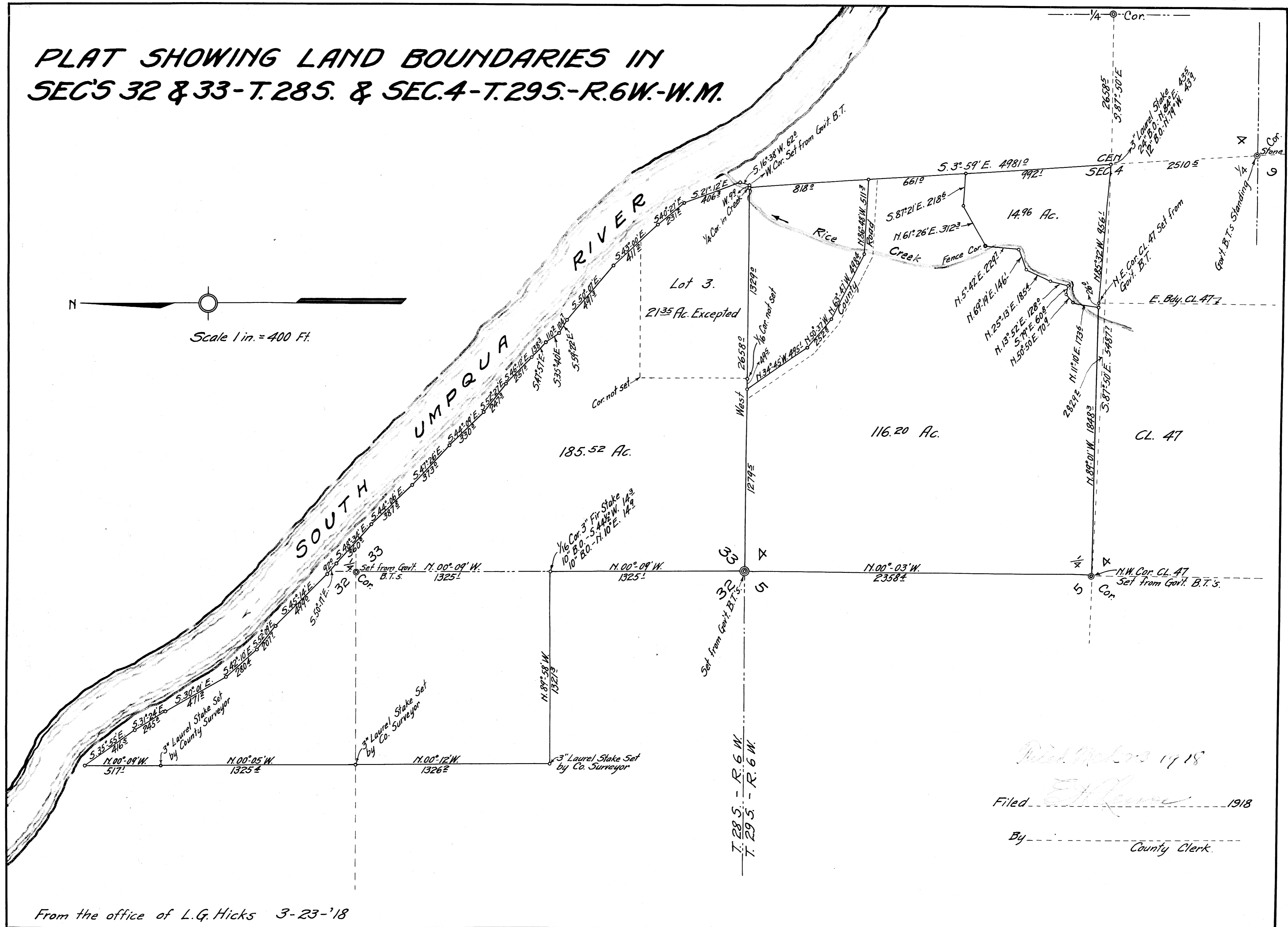
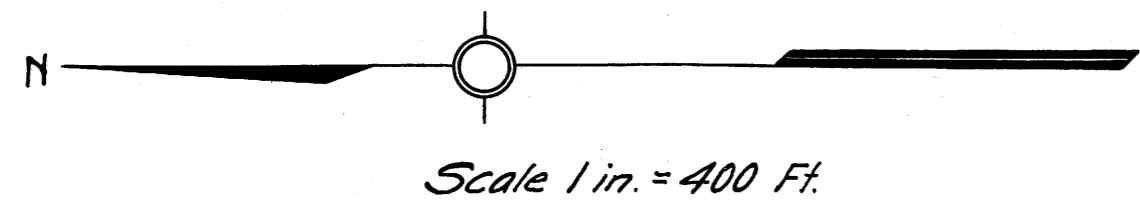


COUNTY SURVEYOR
DO NOT REMOVE FROM FILE

PLAT SHOWING LAND BOUNDARIES IN SEC'S 32 & 33-T.28S. & SEC.4-T.29S.-R.6W.-W.M.



Dated *March 19 18*
Filed *E. H. Lewis* 1918
By _____
County Clerk.

From the office of L.G. Hicks 3-23-'18

MAP FILE M13-77

MAP FILE M13-77