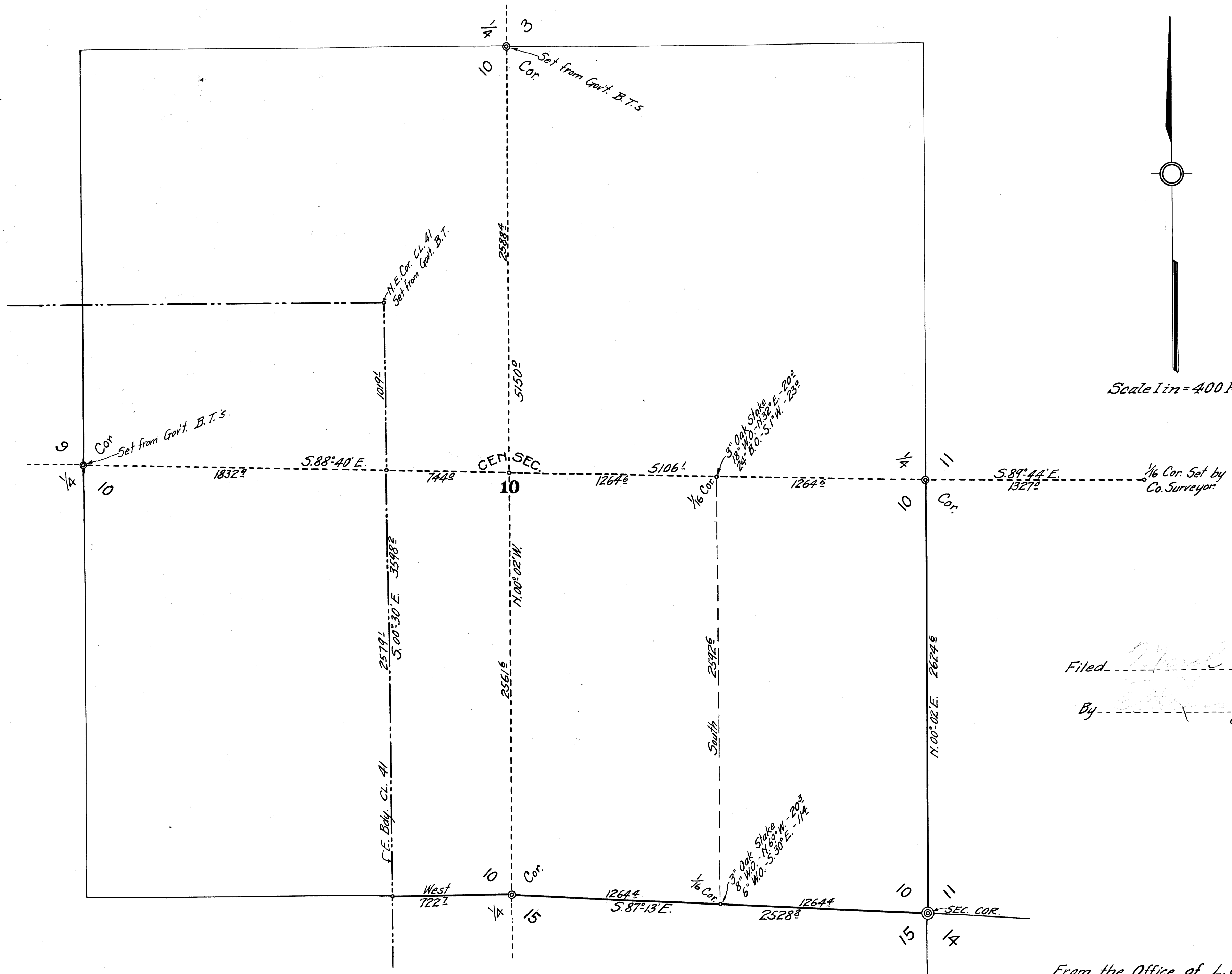


# PLAT SHOWING LAND BOUNDARIES IN SECTION 10-T.29S.-R.6W.-W.M.

COUNTY SURVEYOR  
DO NOT REMOVE THIS PLAT



Filed March 20th 1918.  
 By [Signature]  
 County Clerk.

From the Office of L.G. Hicks 3-23-'18.

MAP FILE M13-76

MAP FILE M13-76