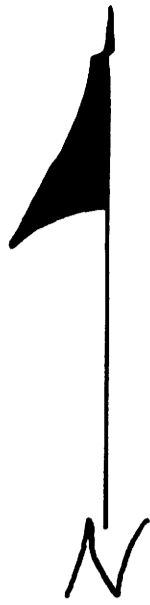


FILED
RECEIVED

JAN 15 1959

COUNTY SURVEYOR
DOUGLAS COUNTY, ORE.

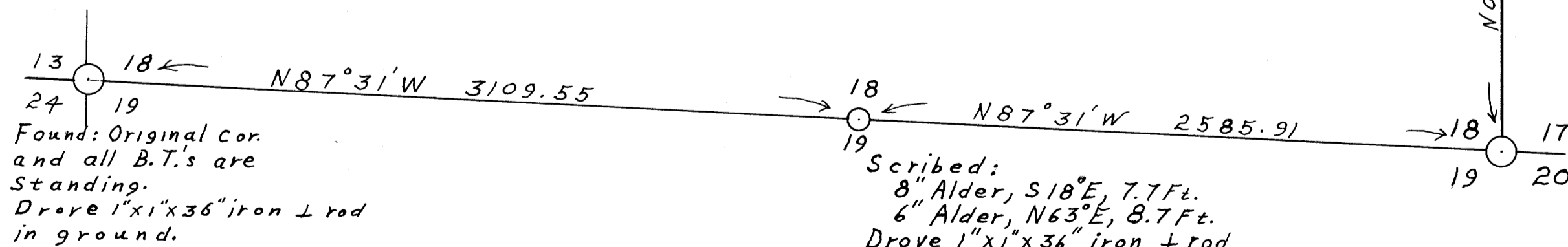
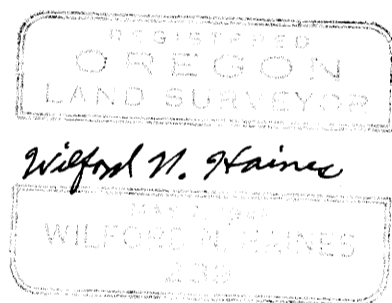


Survey Made For Charles Meade
To Locate Lines And Corners
Section 18, T22S, R9W, W.M.

Scale: 1 in. = 500 ft.

All bearings derived from magnetic
needle observation at S.E. Cor.

November 12, 1958



Found: Original cor.
and all B.T.'s are
standing.
Drove 1"x1"x36" iron ⊥ rod
in ground.

Scribed:
8" Alder, S18°E, 7.7 Ft.
6" Alder, N63°E, 8.7 Ft.
Drove 1"x1"x36" iron ⊥ rod
in ground. Attached brass
cap inscribed "Wilford N.
Haines, Survey Pt., No. 239."

18 17 Found Rock
For # Cor.

Found: 31" Fir (stump) with
scribe, S30°W, 45 Lks.

Scribed:
12" Maple, N58°E, 25.0 Ft.
10" Fir, N77°30'W, 42.1 Ft.
Drove 1"x1"x36" iron ⊥ rod.
Attached brass cap
inscribed "Wilford N.
Haines, Survey Pt., No. 239."

COUNTY SURVEYORS FILE IN
DO NOT REMOVE FROM OFFICE

MAP FILE M1363
FB 4-79

MAP FILE M1363