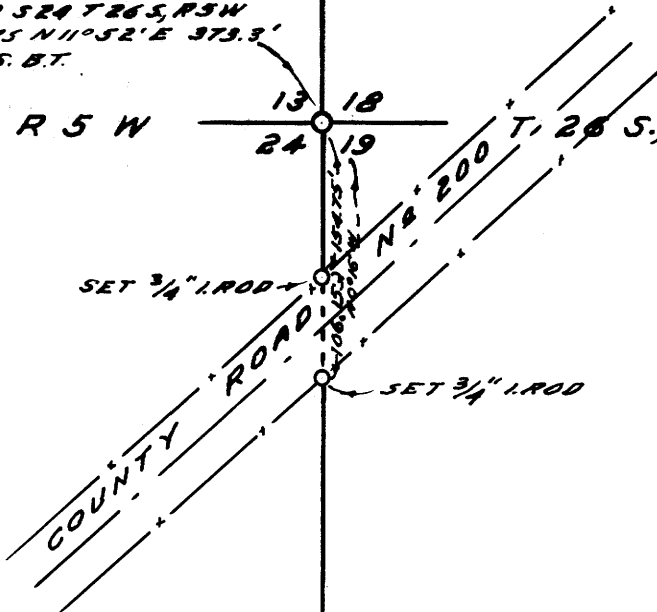


18
RENEW 1/4 CORNER 13/18 T.26 S.
FOUND ORIGINAL 12" WOOD 42"
O. OAK N70°28'W 242.1' OPEN
FIND GOOD SCRIBING 1/4 S. SET
BRASS CAP AT CORNER MKD.
COUNTY SURVEYORS OFFICE 1958
T.26 S. R.5 W. T.26 S. R.4 W.
NEW 875.1' 12" W. OAK BEARS
S 81°46' W 91.5' SCRIBED 1/4 S. 13
C.S. BT.; 9" W. OAK BEARS N83°05' E
104.5' SCRIBED 1/4 S. 18. C.S. BT.

SECTION CORNER SET BY SINGLE APPROPRIATION
BETWEEN 1/4 CORNER 13/18 & M.C. ON SOUTH
BANK OF RIVER. SET BRASS CAP AT COR. MKD.
COUNTY SURVEYORS OFFICE 1958
FROM WHICH A 10" W. OAK BEARS
S 48°52' W 256.0' SCRIBED SEE T.26 S. R.5 W.
C.S. BT.; A 12" W. OAK BEARS N11°32' E 373.3'
SCRIBED SIXTEEN. P.M. C.S. BT.

T. 26 S., R 5 W 13 18
24 19



NOTE:
ALL BEARINGS SHOWN ARE TRUE,
BASED ON A SOLAR OBSERVATION TAKEN
DEC. 15, 1958. FOR CALCULATIONS OF SAID
SOLAR SEE C.S. FILE 43/128

COUNTY SURVEYORS FILE
DO NOT REMOVE FROM OFFICE

COUNTY SURVEYOR'S OFFICE
DOUGLAS COUNTY, OREGON

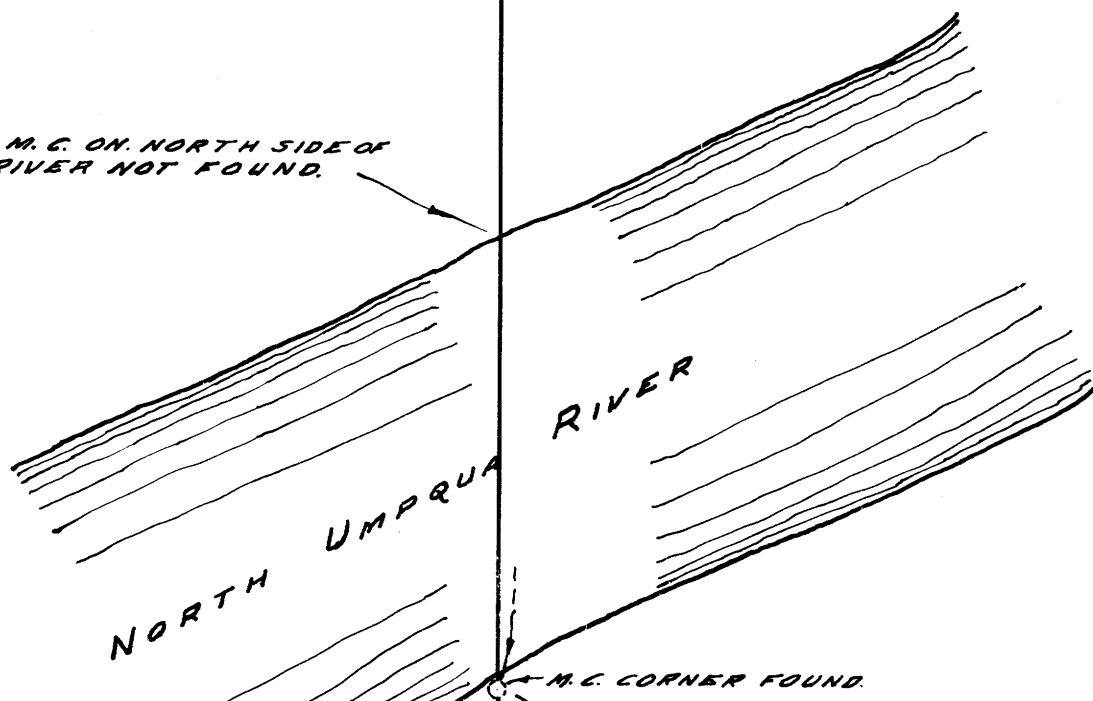
SURVEY TO RENEW SEC. CORNERS
SECTION 18 & 19 T.26 S., R.4 W. W.M.

FRED M. DARBY COUNTY SURVEYOR
SURVEYED DEC. 15, 1958 BY
JAMES W. BYRON - DEPUTY SCALE 1" = 200'
SURVEYED FOR DOUGLAS COUNTY

REGISTERED
OREGON
LAND SURVEYOR

James W. Byron
NOV. 6, 1959
JAMES W. BYRON
303

NOTE: M.C. ON NORTH SIDE OF
RIVER NOT FOUND.



14" W. OAK
FOUND WITNESS CORNER, BRASS CAP
FOR RENEWAL SEE C.S. FILE 43/128
17.4; SEE "PLAY 6" LEWIS ADD. TO SUNSHINE RANCH VOL. 5, PAGE 22

CS FILE FOLDER

CONTAINS

MORE

INFORMATION