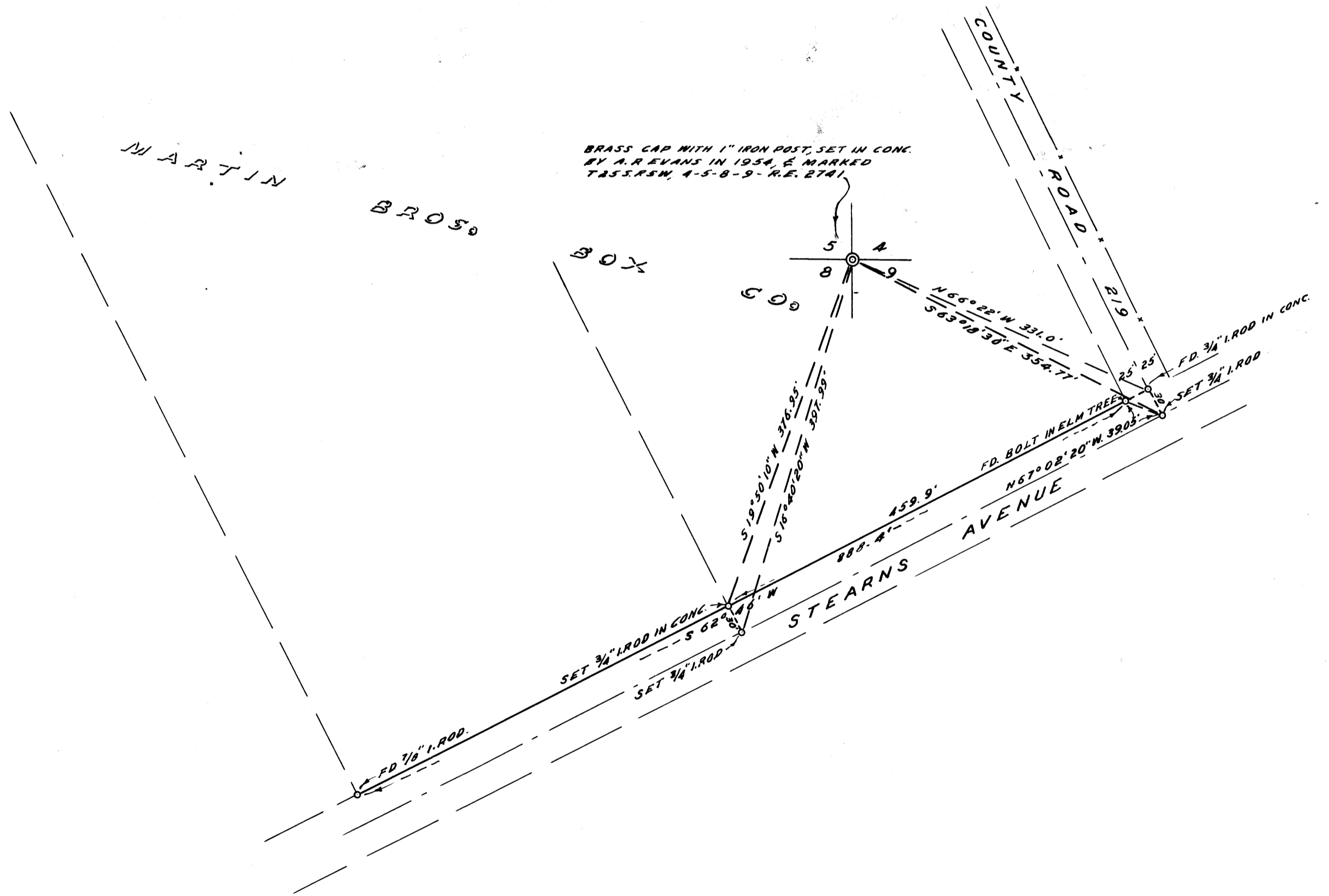


NOTE: The Base Bearing is S 62° 46' W.
The Purpose Of This Survey is To Witness
Out The Bolt in Elm Tree.



COUNTY SURVEYOR'S OFFICE
DOUGLAS COUNTY, OREGON

SURVEY TO SET WITNESS CORNERS,
SECTION 4 & 5 T25 S, R5 W, W. M.

James W. Byron

FRED M. DARBY COUNTY SURVEYOR
SURVEYED DEC. 19, 1958 BY
JAMES W. BYRON - DEPUTY SCALE 1" = 100'
SURVEYED FOR MARTIN BROS. BOX CO.

COUNTY SURVEYORS FILE DATA
DO NOT REMOVE FROM RECORD

CS FILE FOLDER

CONTAINS

MORE

INFORMATION