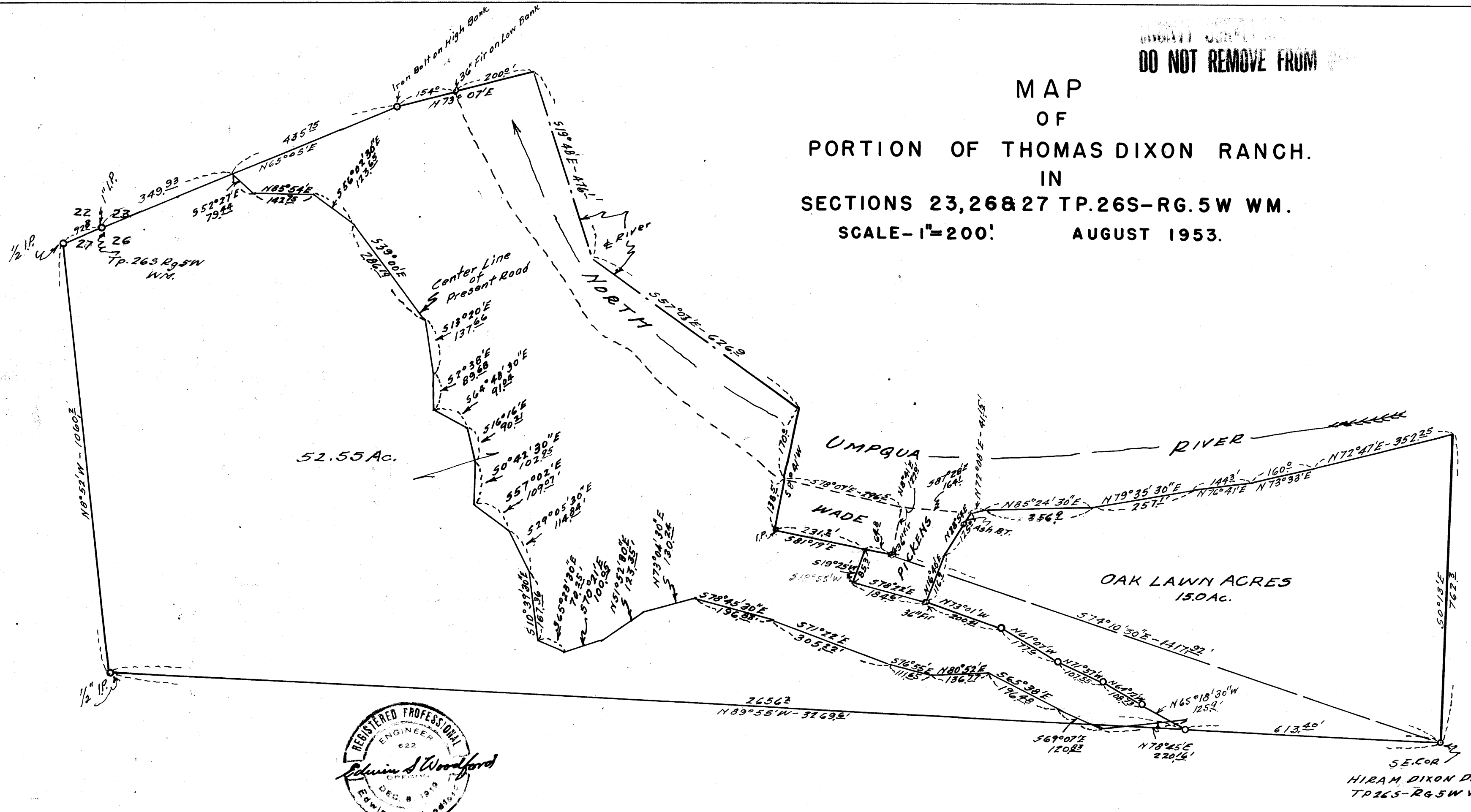
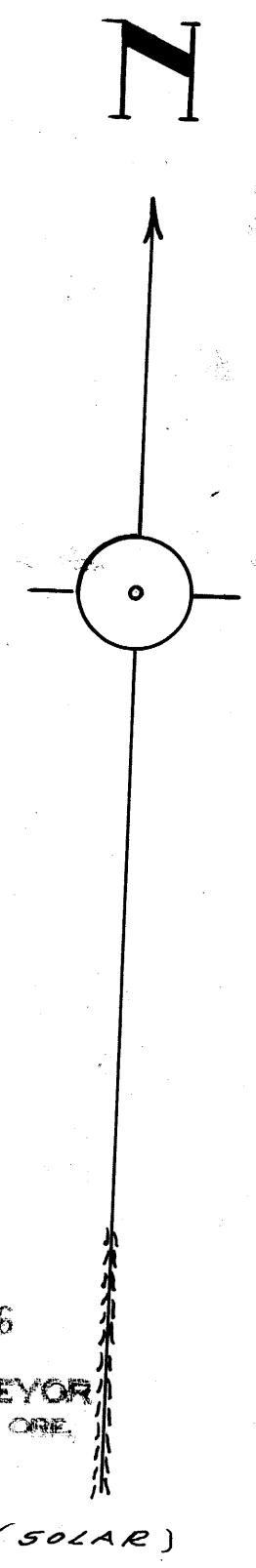


DO NOT REMOVE FROM

MAP OF PORTION OF THOMAS DIXON RANCH. IN SECTIONS 23, 26 & 27 TP. 26S-RG. 5W WM. SCALE - 1" = 200' AUGUST 1953.

C.S. File 42/114 Map File 13-53



13-53

FILED RECEIVED JAN 18 1956 COUNTY SURVEYOR DOUGLAS COUNTY, ORE.



C.S. File No. 42/114