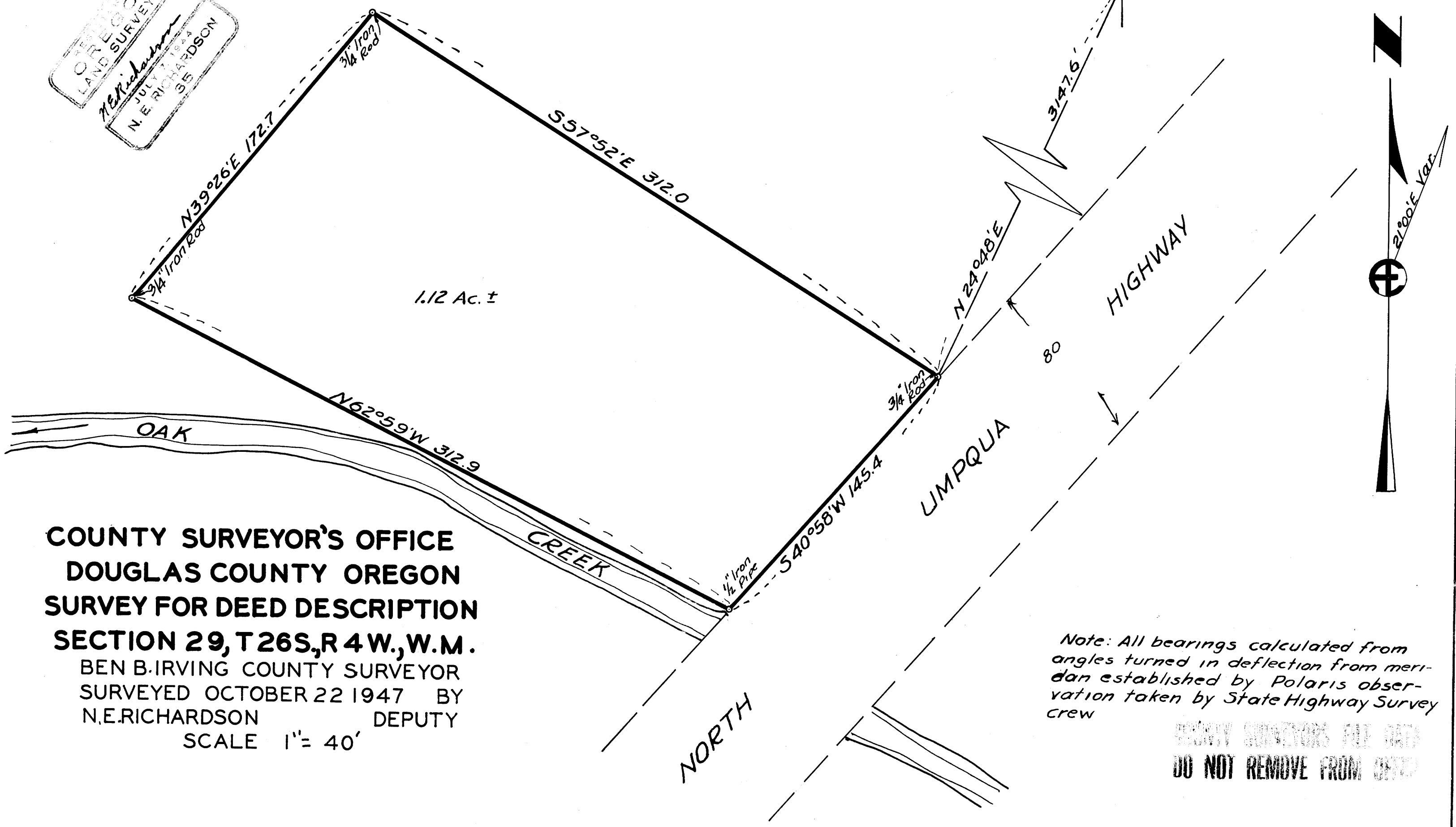


REGISTERED
 LAND SURVEYOR
N.E. Richardson
 JULY 17 1944
 N. E. RICHARDSON
 S.S.



COUNTY SURVEYOR'S OFFICE
DOUGLAS COUNTY OREGON
SURVEY FOR DEED DESCRIPTION
SECTION 29, T26S, R4W, W.M.
 BEN B. IRVING COUNTY SURVEYOR
 SURVEYED OCTOBER 22 1947 BY
 N.E. RICHARDSON DEPUTY
 SCALE 1" = 40'

*Note: All bearings calculated from
 angles turned in deflection from meri-
 dan established by Polaris obser-
 vation taken by State Highway Survey
 crew*

COUNTY SURVEYORS FILE DATA
DO NOT REMOVE FROM OFFICE

A.R. Evans 10/30/47

MAP FILE M 13 - 51

M 13 - 51