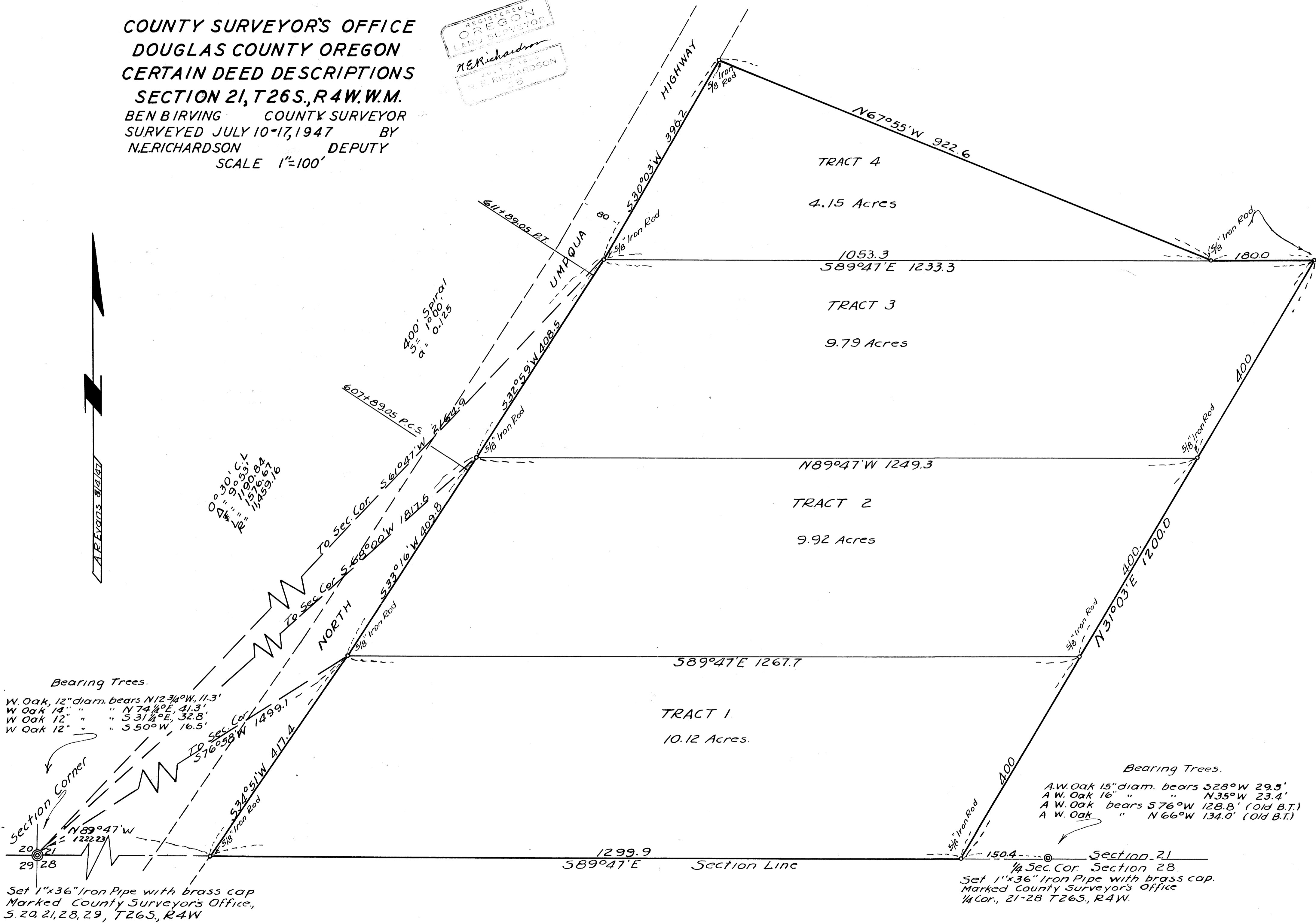


COUNTY SURVEYORS FILE NO.  
DO NOT REMOVE FROM FILE

COUNTY SURVEYOR'S OFFICE  
DOUGLAS COUNTY OREGON  
CERTAIN DEED DESCRIPTIONS  
SECTION 21, T26S, R4W.W.M.  
BEN BIRVING COUNTY SURVEYOR  
SURVEYED JULY 10-17, 1947 BY  
N.E. RICHARDSON DEPUTY  
SCALE 1"=100'

REGISTERED  
OREGON  
LAND SURVEYOR  
N.E. Richardson  
JULY 7, 1944  
N.E. RICHARDSON  
C.S.

M 13-45



0°30' C.L.  
Δ = 9°53.4  
L = 1190.84  
R = 1576.67  
1,459.16

Bearing Trees.  
W. Oak, 12" diam. bears N12 3/4°W, 11.3'  
W Oak 14" " " N74 1/2°E, 41.3'  
W Oak 12" " " S31 1/2°E, 32.8'  
W Oak 12" " " S50°W, 16.5'

Bearing Trees.  
A.W. Oak 15" diam. bears S28°W 29.5'  
A.W. Oak 16" " " N35°W 23.4'  
A.W. Oak bears S76°W 128.8' (Old B.T.)  
A.W. Oak " N66°W 134.0' (Old B.T.)

Set 1"x36" Iron Pipe with brass cap  
Marked County Surveyor's Office,  
S. 20, 21, 28, 29, T26S, R4W

Section 21  
1/4 Sec. Cor. Section 28.  
Set 1"x36" Iron Pipe with brass cap.  
Marked County Surveyor's Office  
1/4 Cor., 21-28 T26S, R4W.

M 13-45 P