

COUNTY SURVEYOR'S OFFICE
DO NOT REMOVE FROM FILE

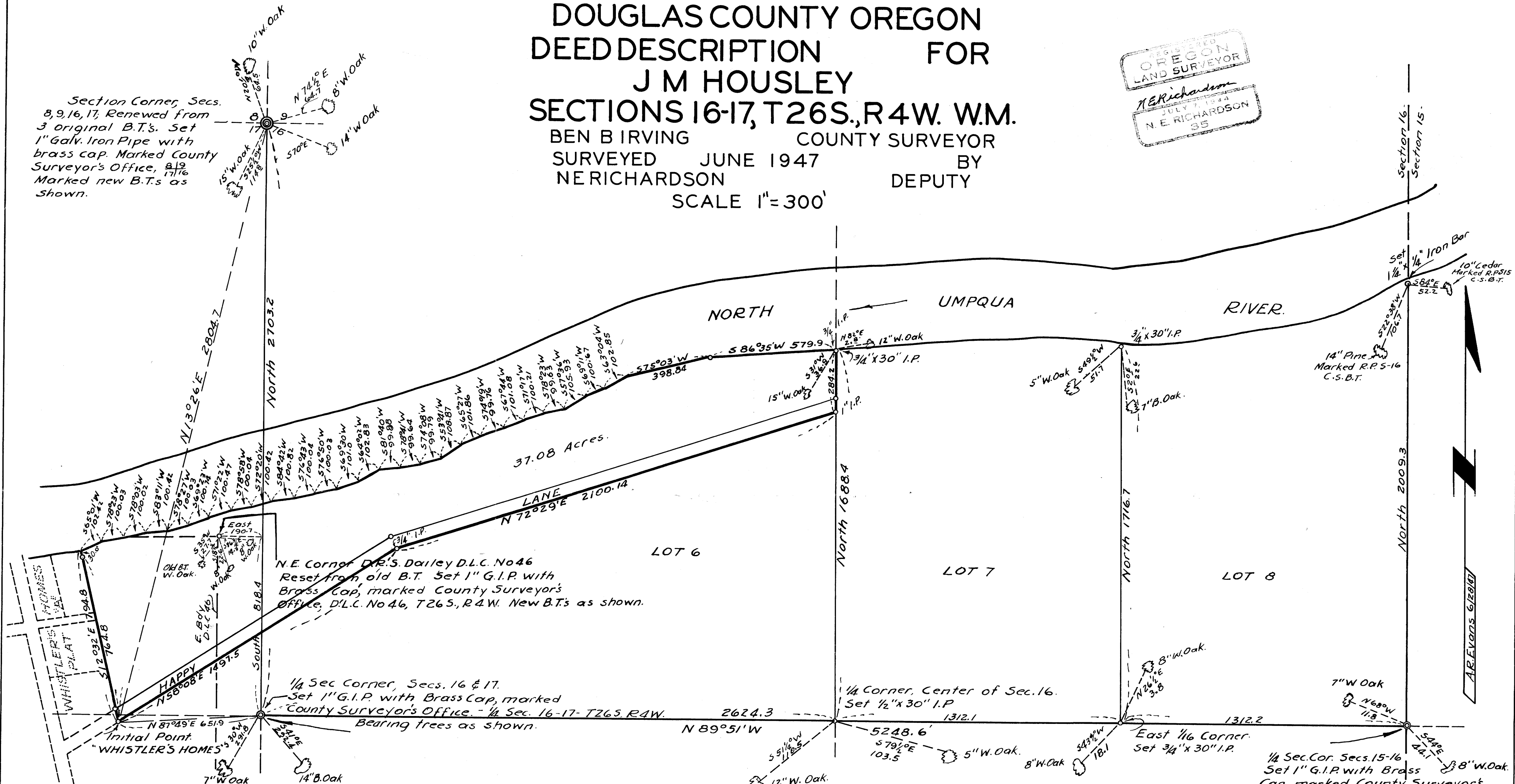
COUNTY SURVEYOR'S OFFICE DOUGLAS COUNTY OREGON DEED DESCRIPTION FOR J M HOUSLEY

SECTIONS 16-17, T26S., R4W. W.M.
BEN B IRVING COUNTY SURVEYOR
SURVEYED JUNE 1947 BY
NE RICHARDSON DEPUTY

SCALE 1"=300'



Section Corner, Secs. 8, 9, 16, 17, Renewed from 3 original B.T.s. Set 1" Galv. Iron Pipe with brass cap. Marked County Surveyor's Office, 8/19/16. Marked new B.T.s as shown.



N.E. Corner D.R.S. Dailey D.L.C. No 46
Reset from old B.T. Set 1" G.I.P. with
Brass Cap, marked County Surveyor's
Office, D.L.C. No 46, T26S., R4W. New B.T.s as shown.

1/4 Sec Corner, Secs. 16 & 17.
Set 1" G.I.P. with Brass Cap, marked
County Surveyor's Office. - 1/4 Sec. 16-17- T26S. R4W.
Bearing trees as shown.

Note: All Bearings calculated from angles turned in deflection from meridian established by solar observation taken during course of survey for "Whistler's Homes, Plat "A"

The following corners on Section 16 have been obliterated; S 1/4 Sec. cor., North 1/4 Sec. cor., N.E. corner, and S.W. corner. Their replacement by proportional measurement would necessitate the surveying of a minimum of 5 1/2 miles of additional line, and it is highly probable that the resultant locations would be at considerable variance with the original locations. After careful computations, and consultation with interested property owners, the center 1/4 Sec. corner of Section 16 was placed at the midpoint of the direct line between the east and West 1/4 Section corners as most nearly conforming to the original subdivision of this section as shown by the official plat. The subdivisional lines of Lots 7 and 8 were projected North from the proper points located on the East and West center line of said section.