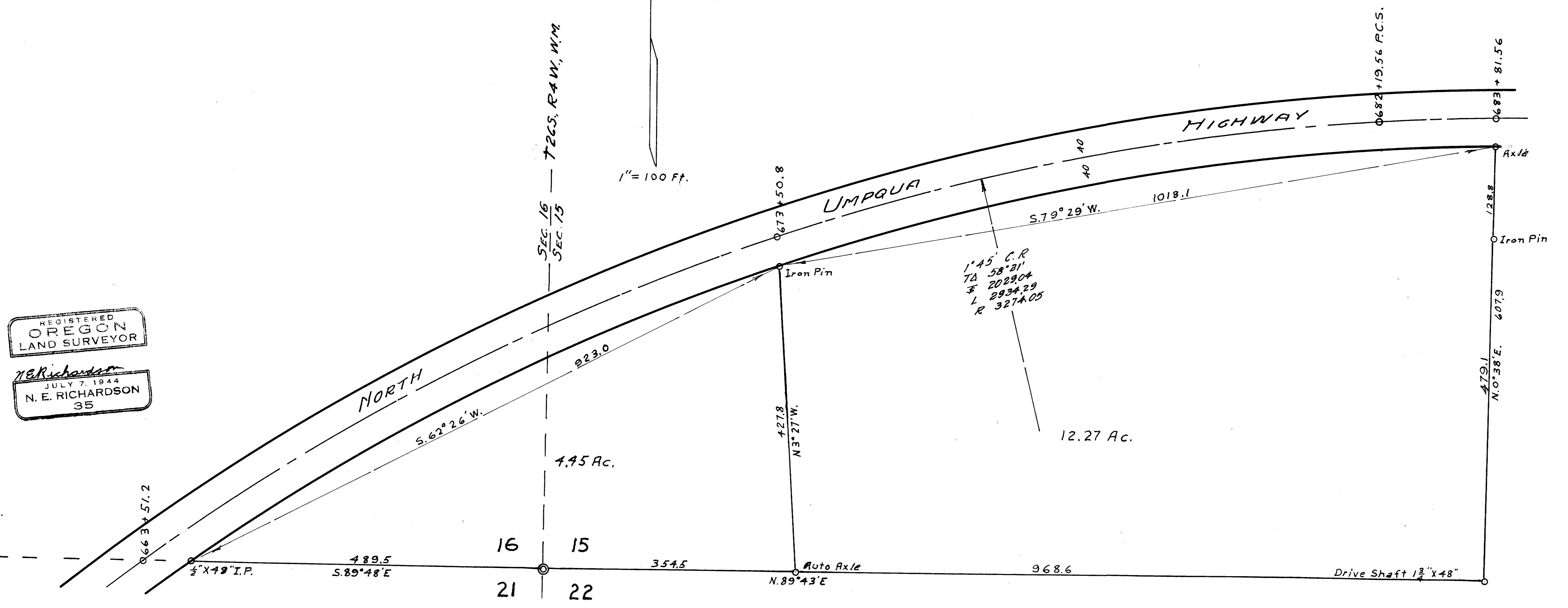
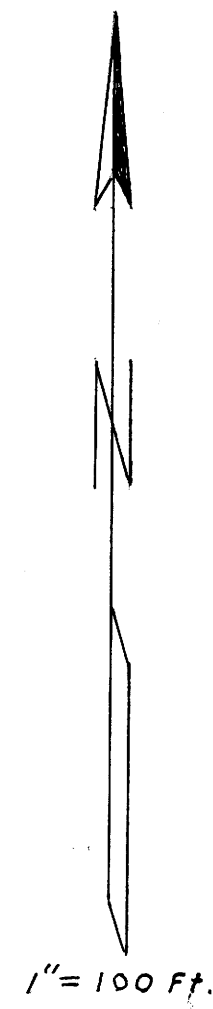


COUNTY SURVEYORS FILE  
DO NOT REMOVE FROM

COUNTY SURVEYOR'S OFFICE  
DOUGLAS COUNTY OREGON  
CERTAIN DEED DESCRIPTIONS  
SECTIONS 15-16 T26S R4W WM.

BEN. B. IRVING COUNTY SURVEYOR  
Surveyed SEPT. 1946  
H. E. RICHARDSON Deputy County Surveyor.



REGISTERED  
OREGON  
LAND SURVEYOR  
N.E. Richardson  
JULY 7, 1944  
N. E. RICHARDSON  
35