

East 3274.9

83.3 Ac.

Property being purchased by the
CORDER LUMBER Co.

SCALE 1"=200'

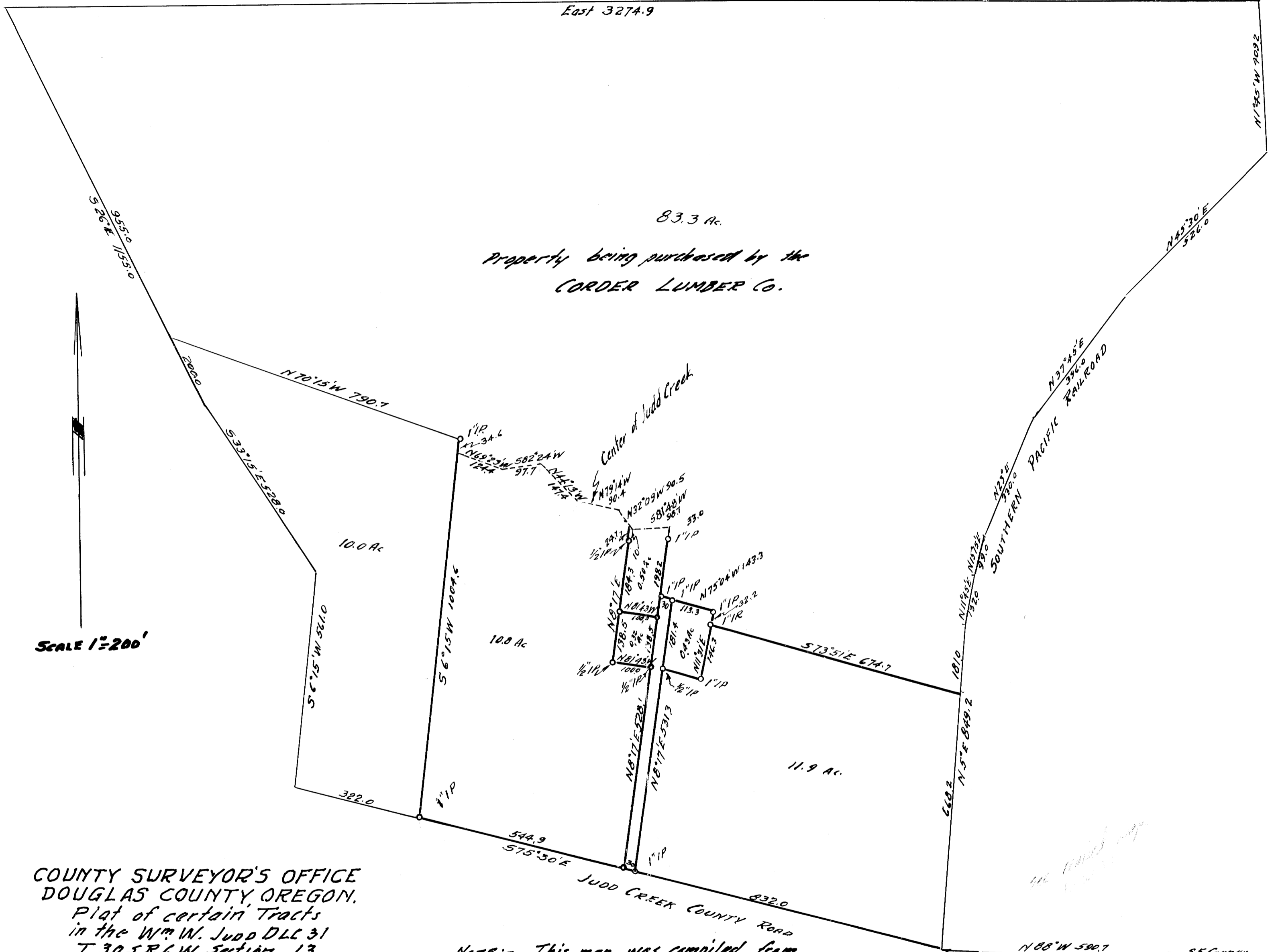
COUNTY SURVEYOR'S OFFICE
DOUGLAS COUNTY, OREGON.
Plat of certain Tracts
in the Wm W. Judd DLC 31
T 30 S R 6 W Section 13

BEN. B. IRVING COUNTY SURVEYOR
JAN 20 1951

NOTE:- This map was compiled from
2 maps of surveys made by Geo. Wenderoth
Deputy County Surveyor and certain descriptions
based thereon. Heavy lines are those shown
as surveyed, others from deed descriptions.

COUNTY SURVEYOR'S OFFICE
DO NOT REMOVE FROM OFFICE

SE Corner
Wm W. Judd
DLC No. 31



35. FILE NO. 44/97
MAP FILE M13-4