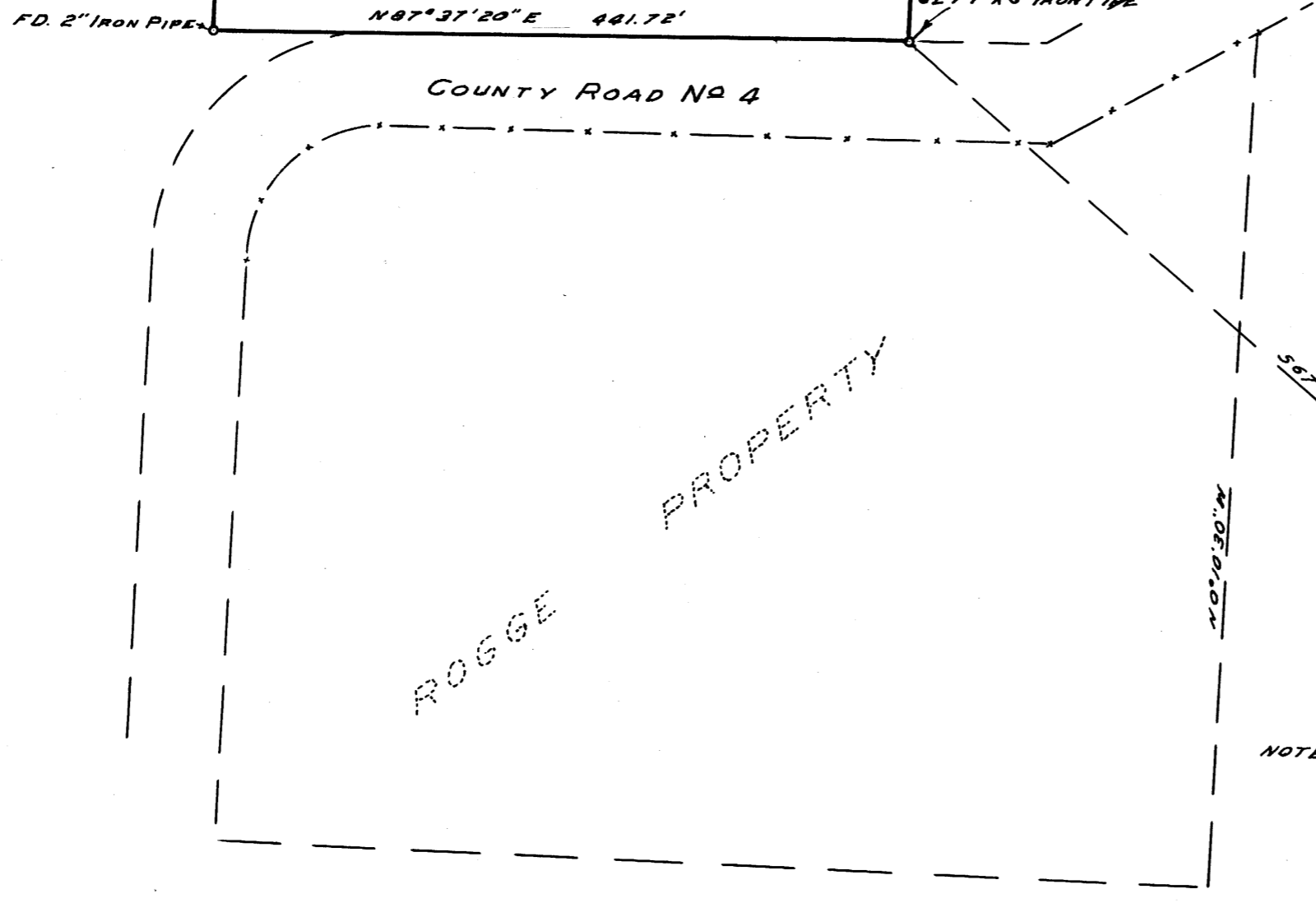


COUNTY SURVEYOR'S OFFICE  
DOUGLAS COUNTY OREGON

SURVEY FOR DEED DESCRIPTION  
IN D.L.C. N° 40 SEC. 14, T. 26 S., R. 4 W.  
W. M.

BEN B. IRVING COUNTY SURVEYOR  
JAMES W. BYRON DEPUTY  
SURVEYED AUG. 16, 1954



NOTE: BASE BEARING N0°10'30"W ALONG EAST LINE  
OF ROGGE PROPERTY BY SURVEY DATED DEC. 1950  
C.S. FILE 44/79.

NOTE: SEC. COR. SHOWN AS PER 14 13  
SURVEY OF ROGGE PROPERTY 23 24  
DEC. 1950 BY COUNTY SURVEYORS  
OFFICE. C.S. FILE 44/79

COUNTY SURVEYORS FILE  
DO NOT REMOVE FROM OFF.