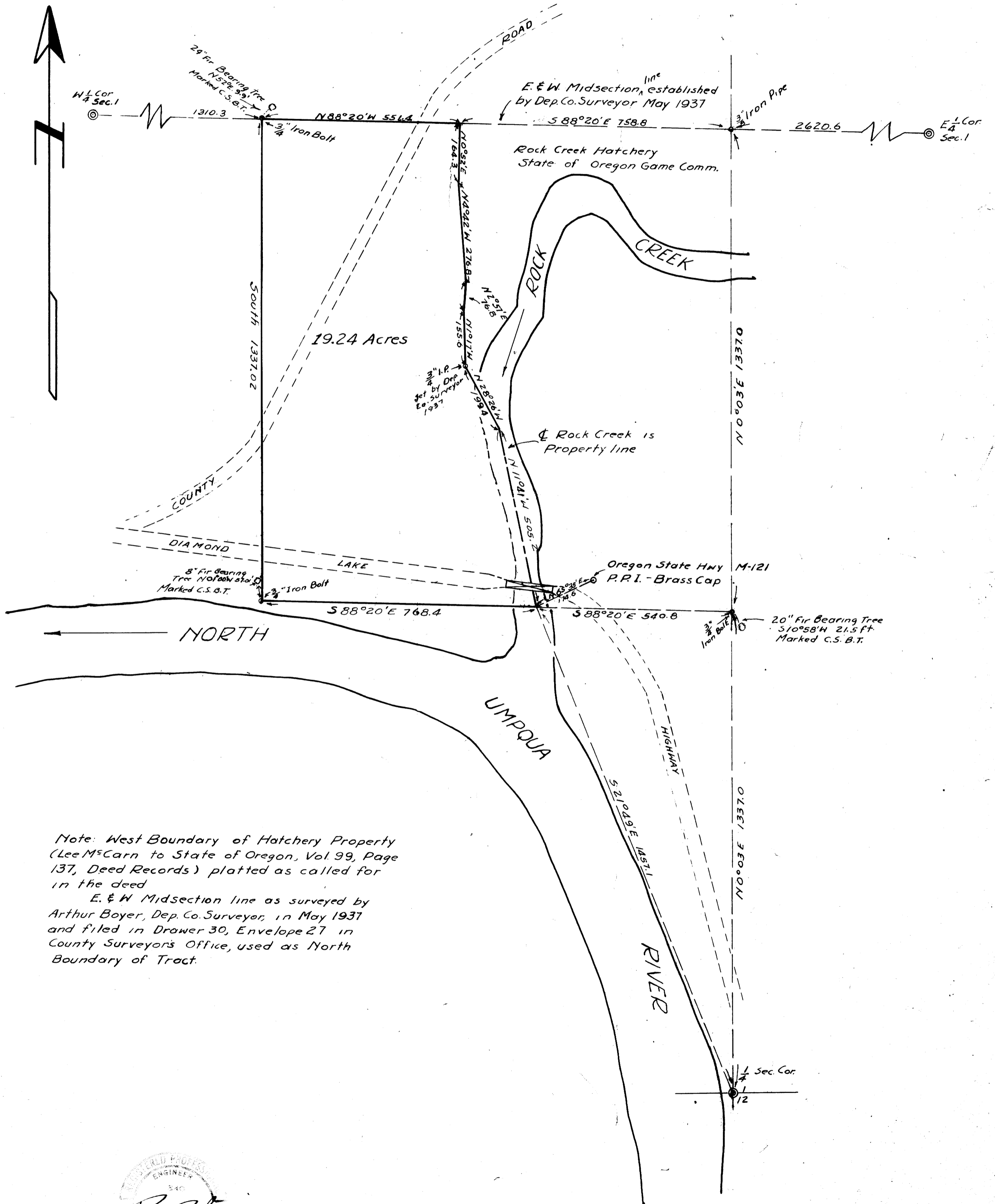


COUNTY SURVEYORS FILE  
DO NOT REMOVE FROM OFFICE

COUNTY SURVEYOR'S OFFICE  
DOUGLAS COUNTY OREGON

SURVEY OF PART OF LEE McCARN  
PROPERTY IN SECTION 1  
T26S., R3W. WILMER.

BEN B. IRVING COUNTY SURVEYOR  
SURVEYED JAN. 1947 BY B.B. IRVING  
DRAWN BY A.R. EVANS  
SCALE 1" = 200'



Note: West Boundary of Hatchery Property  
(Lee McCarn to State of Oregon, Vol. 99, Page  
137, Deed Records) platted as called for  
in the deed  
E. & W. Midsection line as surveyed by  
Arthur Boyer, Dep. Co. Surveyor, in May 1937  
and filed in Drawer 30, Envelope 27 in  
County Surveyors Office, used as North  
Boundary of Tract.

