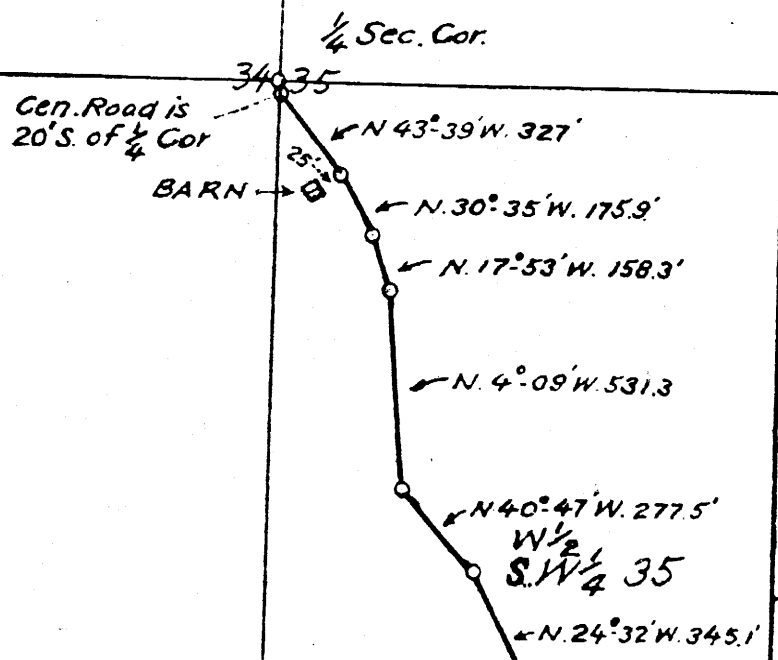


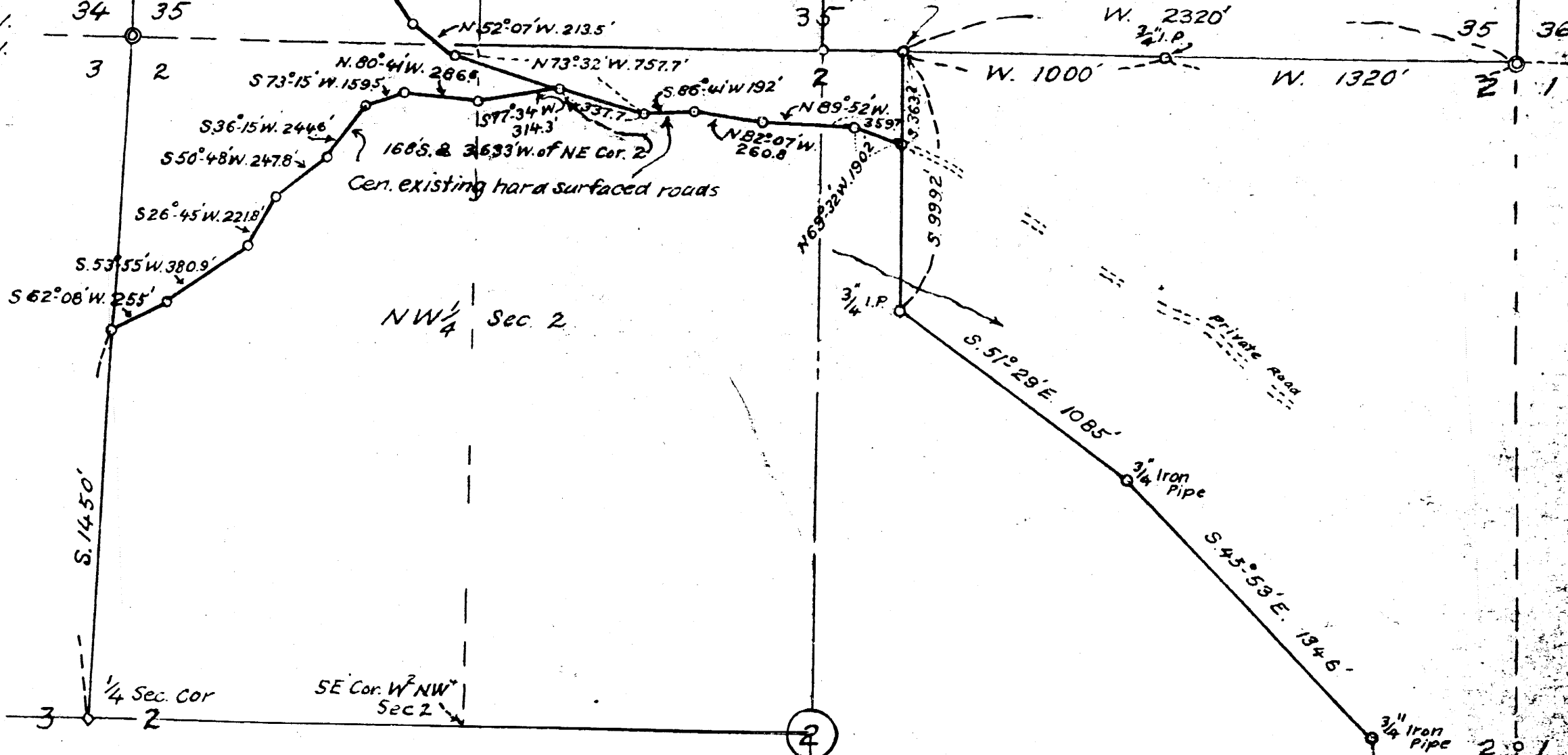
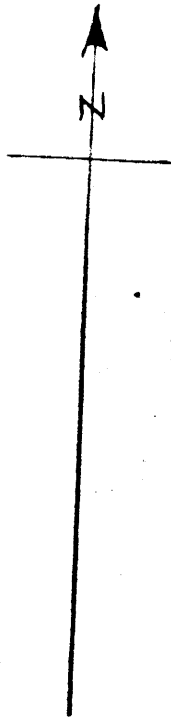
NE 1/4 Sec. 34



SE 1/4 Sec. 35

SE 1/4 SW 1/4 Sec. 35

T. 28 S.; R. 8 W.  
T. 29 S.; R. 8 W.



NW 1/4 Sec. 2

SE 1/4 SW 1/4 Sec. 2

THIS COPY MADE FROM  
A XEROX 2510

DATE 3-30-89

COUNTY SURVEYORS FILE  
DO NOT REMOVE FROM OFFICE

EMIL & SIGNE NYBERG  
TENMILE, ORE.

ACREAGE IN TWP. 28 & 29 S;  
R. 8 W; WM; DOUGLAS COUNTY, ORE.

May 1958

Oct. 1958

Nov. 1958

*Arthur Nyberg*

FILED  
RECEIVED

NOV 17 1958

CLERK OF COUNTY