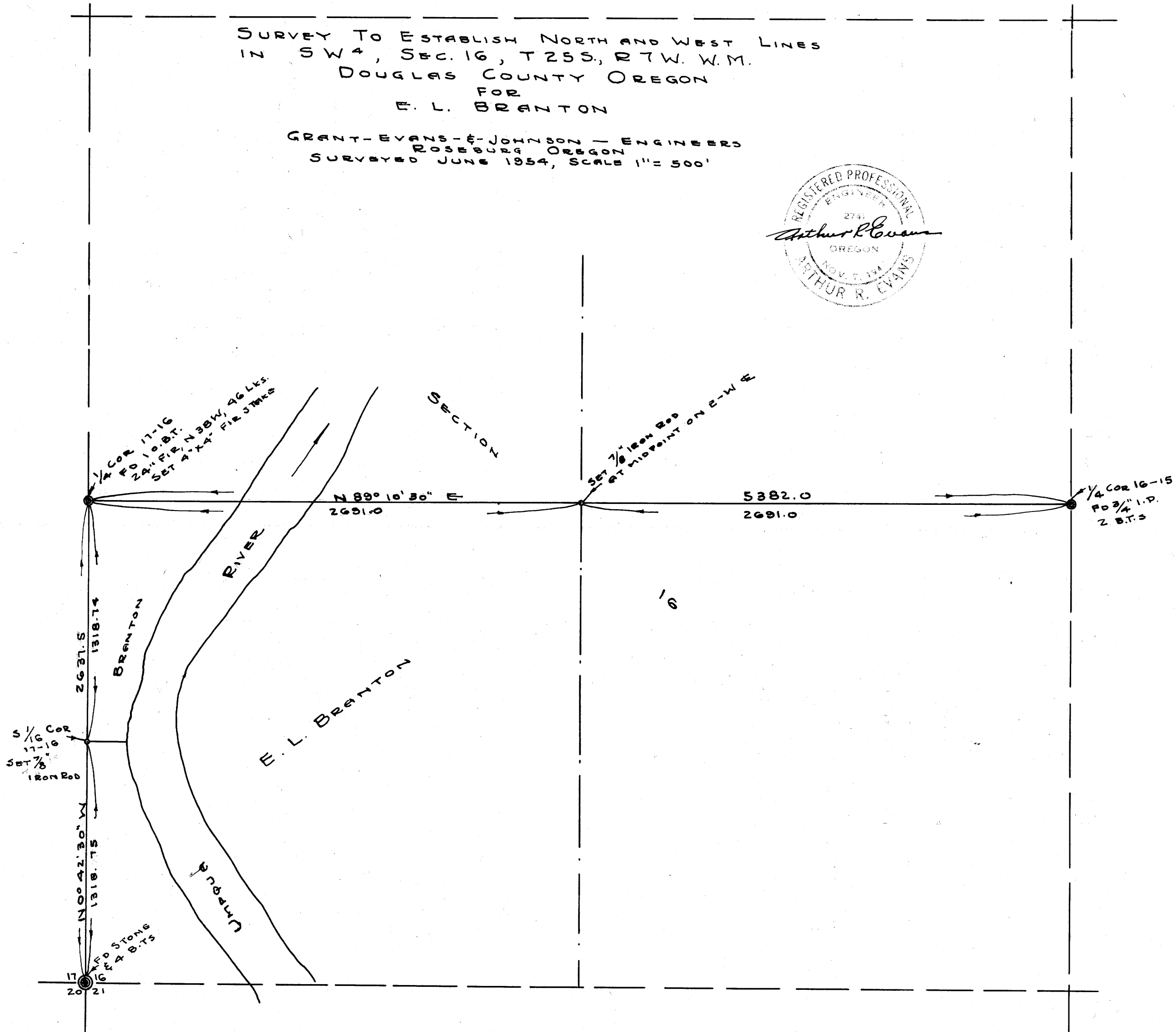


MAP FILE M.13-17

SURVEY TO ESTABLISH NORTH AND WEST LINES
IN SW⁴, SEC. 16, T25S, R7W, W.M.
DOUGLAS COUNTY OREGON
FOR
E. L. BRANTON

GRANT-EVANS- & JOHNSON ENGINEERS
ROSEBURG, OREGON
SURVEYED JUNE 1954, SCALE 1" = 500'



FILED
RECEIVED

NOV 3 1954

COUNTY SURVEYOR
DOUGLAS COUNTY, ORE.

COUNTY SURVEYORS FILE BOOK
DO NOT REMOVE FROM OFFICE

M.13-17
Co. Sur. File 41/313