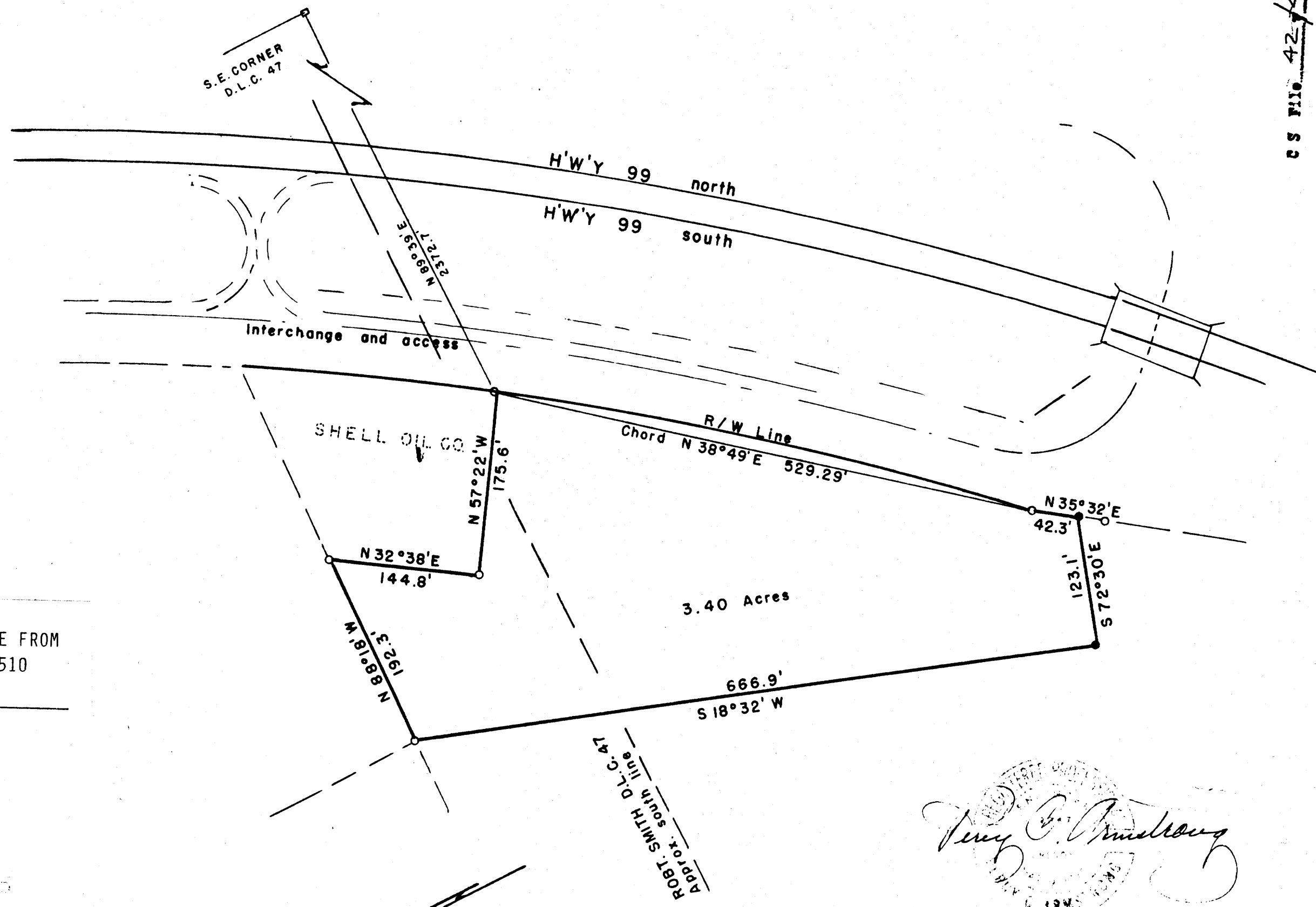


CS FILE 42/401
Map File M 13-16



THIS COPY MADE FROM
A XEROX 2510
DATE 3-30-89

FILED
RECEIVED
NOV 12 1958

COUNTY SURVEYOR
DOUGLAS COUNTY, OREGON

○ = ROD FOUND
● = 3/4" X 48" ROD SET

Very B. Armstrong

PLAT OF PART OF E.L.STRONG Property
IN SEC 28-T23S-R5W W.M. DOUGLAS COUNTY, OREGON
October 1958
Scale 1" = 100'

**COUNTY SURVEYORS FILE DATA
DO NOT REMOVE FROM OFFICE**

CS FILE 42/401
Map File M 13-16