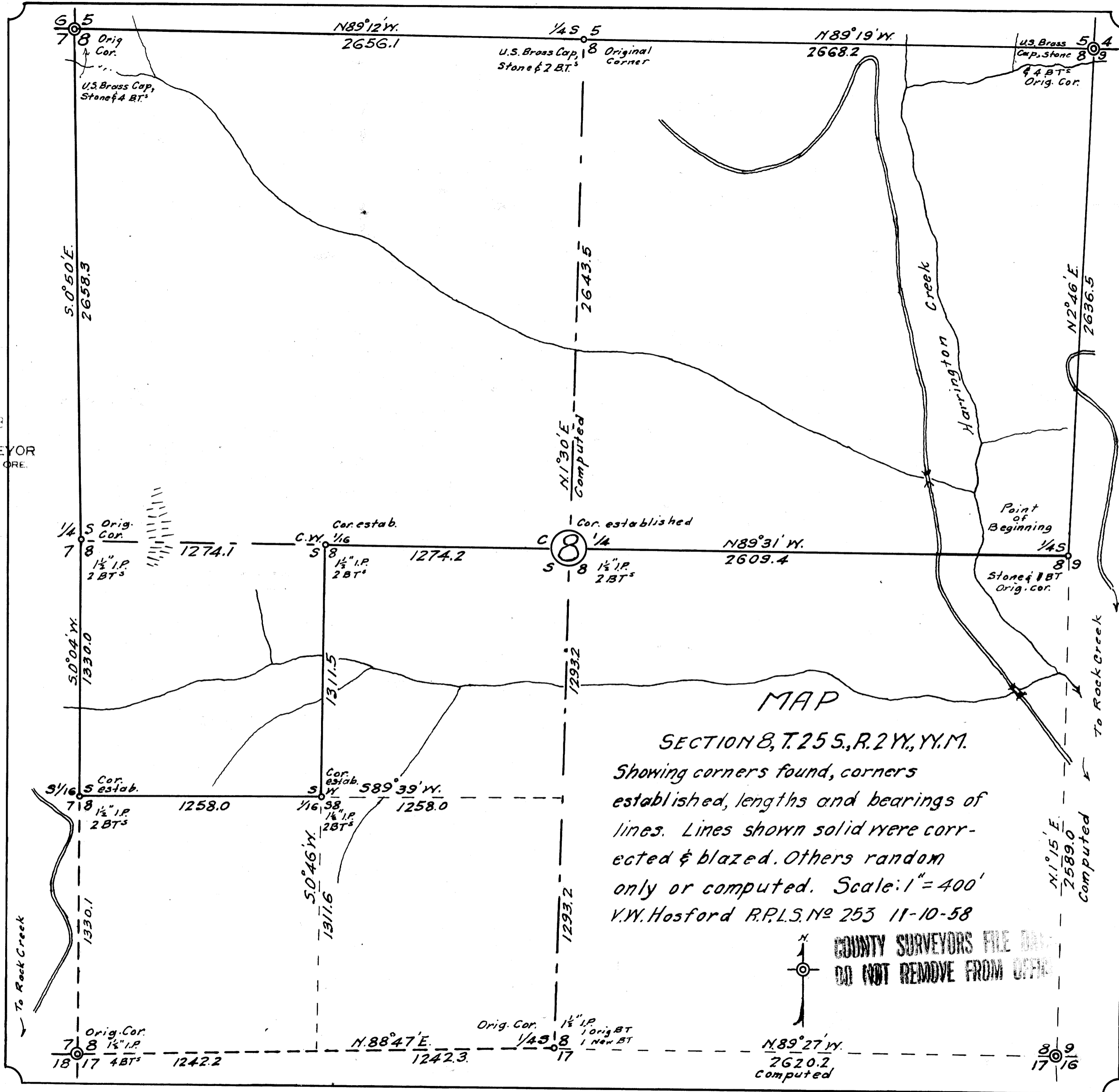


FILED  
RECEIVED

NOV 10 1958

COUNTY SURVEYOR  
DOUGLAS COUNTY, ORE.



COUNTY SURVEYORS FILE DRAWING  
DO NOT REMOVE FROM OFFICE

Map File M.13-13  
O.S. File 42-398

**SUB-DIVISION OF SECTION 8**

T.25S., R2W., W.M.

BY V. W. HOSFORD, R.P.L.S. No. 253

FOR EVANS PRODUCTS COMPANY

AUGUST - OCTOBER 1958

Preparatory to logging operations in that area, Evans Products Co. sought to establish the exterior boundaries of their properties in section 8, which constitutes the N. $\frac{1}{2}$  and the N.W. $\frac{1}{4}$  of the S.W. $\frac{1}{4}$ .

This survey was made by the method of running angular random lines between the various corners. A transit was used for measuring the angles, all of which were doubled. All distances were measured with a 300 ft. steel tape, and all vertical angles measured by the transit. Bearings were determined by solar observations. Magnetic variation is approximately 20° 30' in this vicinity.

Beginning at the  $\frac{1}{4}$  corner common to sections 8 and 9, T.25S., R.2W., W.M., which is a stone marked and witnessed as described by the surveyor general. The original bearing tree for section 9 is living, the one for section 8 is dead.

Running thence N.2°46'E. on true line between sections 8 and 9.  
Gradual ascent along west slope.

At 870 ft., logging truck road N.W., & S.E.

At 1060 ft., same road E & W.

At 1950 ft., begin steep descent.

At 2580 ft., a stream 3 ft. wide flows S75°W, begin steep ascent.

At 2636.5 ft., the corner of sections 4, 5, 8, & 9.

This corner is a brass cap set by the U. S. cadastral engineers in 1951. The four original bearing trees are standing.

Thence I run N  $89^{\circ} 19'$  W. on true line between sections 5 and 8.

Along south slope.

At 410 ft. a stream 2 ft. wide flows south.

At 800 ft. begin steep descent.

At 980 ft. Harrington Creek, 10 ft. wide flows south, begin steep ascent.

At 1150 ft. a truck road from the south approaches to within 50 ft. of the section line, then curves to the southwest.

At 2668.2 the  $\frac{1}{4}$  corner common to sections 5 and 8. This corner is a U. S. brass cap - 1951 - beside the original stone corner. Both original bearing trees are standing.

Thence N  $89^{\circ} 12'$  W. on true line between sections 5 and 8. Continue steep ascent.

At 560 ft. a spur ridge slopes S  $75^{\circ}$ E, thence along steep south slope.

At 2350 ft. a stream 2 ft. wide flows S  $30^{\circ}$ E.

At 2656.1 ft. the corner of sections 5, 6, 7, and 8. This corner is a U. S. brass cap, 1951, beside the original corner stone. All four bearing trees are standing.

Thence I run S  $0^{\circ} 50'$  E. on a true line between sections 7 and 8, steep descent.

At 160 ft. an intermittent stream 4 ft. wide flows S.  $70^{\circ}$ E., begin steep ascent.

At 900 ft. begin gradual ascent along east slope.

At 2658.3 ft. the  $\frac{1}{4}$  corner common to sections 7 and 8. This corner is an  $1\frac{1}{2}$  inch iron pipe set in my re-monumentation of 1957. Both original bearing trees are standing.

Thence I run S.  $0^{\circ} 04'$  W. on a true line between sections 7 and 8. Medium descent.

At 875 ft. a stream 2 ft. wide flows east, **begin steep** ascent.

At 1125 ft. a spur slopes N 60°E, thence approximately level along east slope.

At 1330.0 ft. the point for the south 1/16 S 7 and 8. At this point I drove a 1½ inch iron pipe 36" long, 24" in the ground, from which:

A Hemlock 30" in diam. bears N 52°E 30.2 ft.

Marked S 1/16 S8 253 BT

A Cedar 30" in diam. bears N 73°W 30.6 ft.

Marked S 1/16 S7 253 BT

Beside the iron pipe I set a 4" Hemlock post marked S 1/16 S 7&8 253

At 1500 ft. a truck road bears west, 40 ft.

At 1900 ft. a spring flows east.

At 2075 ft. same road bears west, 50 ft., begin gradual descent.

At 2660.1 ft. the corner of sections 7, 8, 17, and 18. At this corner I found the iron pipe and bearing trees as noted in my re-monumentation of 1957.

Thence I run N 88° 47' E on a true line between sections 8 and 17. Gradual ascent.

At 600 ft. a spur ridge slopes S.E., begin gradual descent on north slope.

At 2484.5 ft. the ¼ corner common to sections 8 and 17. At this corner I could find no trace of the original corner post or bearing tree for section 8. The tree described in the original field notes as being an 8" Hemlock, which from the corner bears S. 6°W. 20 links, is standing and now 16 inches in diameter. From this tree the position of the corner was determined and at this point I drove a 1½ inch iron pipe 36" long, 24" in the ground and marked new B.T.

A Hemlock 15" in diam. Bears N. 75°W. 29.9 ft.

marked ¼ S8 253 B.T. ✓

Beside the iron pipe I set a 4" Cedar Post marked ¼ S 8&17 253

From the ¼ corner common to sections 8 and 9, described above, I run N. 89° 31' W., on the true E & W center line of section 8. Steep descent.

At 480 ft. Harrington Creek, 10 ft. wide, flows S.  $30^{\circ}$ W., begin medium ascent.

At 680 ft., truck road N & S, begin steep ascent.

At 1500 ft. a spur ridge slopes N.E., then on medium ascent along steep north slope.

At 2100 ft. a spur ridge slopes S  $75^{\circ}$ E, begin gradual ascent on south slope.

At 2609.4 ft. the point for the center  $\frac{1}{4}$  corner of section 8. At this point I drove a  $1\frac{1}{2}$ " iron pipe 36" long 24" in the ground, from which:

A Hemlock 16" in diam. bears S  $42^{\circ}$ W 13.6 ft.

marked C $\frac{1}{4}$  S8 253 B.T.

A Hemlock 16" in diam. bears N  $13\frac{1}{2}^{\circ}$ W 13.6 ft.

marked C $\frac{1}{4}$  S8 253 B.T. ✓

Beside the iron pipe I set a 4" Hemlock post marked C $\frac{1}{4}$  S8 253

At 3883.6 ft. the point for the CW 1/16 S8. At this point I drove a  $1\frac{1}{2}$  inch iron pipe 36" long 24" in the ground, from which:

A Hemlock 24" in diam. bears N  $21\frac{1}{2}^{\circ}$ E 31.0 ft.

marked CW 1/16 S8 253 B.T.

A Hemlock 12" in diam. bears S  $28\frac{1}{2}^{\circ}$ E 5.8 ft.

marked CW 1/16 S8 253 B.T.

Beside the iron pipe I set a 4" Hemlock post marked CW 1/16 S8 253

At 4650 ft. the foot of a steep rock cliff.

At 4850 ft. the top of rock cliff.

At 5157.7 ft. the  $\frac{1}{4}$  corner common to sections 7 and 8, described above.

From the CW 1/16 S8, described above, I run  $SO^{\circ}$   $46'$ W on the true N & S center line of the SW  $\frac{1}{4}$  of section 8. Gradual descent.

At 190 ft. begin steep descent.

At 580 ft. a stream 3 ft. wide flows S 80°E, begin steep ascent.

At 715 ft. a rocky spur slopes N.E.

At 800 ft. a stream 1 ft. wide flows N. 60°E.

At 1311.5 ft. the point for the S.W. 1/16 S8. At this point I drove a 1½" iron pipe 36" long 24" in the ground, from which:

A Hemlock 12" in diam. bears S 55°E 26.3 ft.

marked SW 1/16 S8 253 B.T.

A Chinquapin 18" in diam. bears S 88°W 26.6 ft.

marked SW 1/16 S8 253 B.T.

Beside the iron pipe I set a 4" Hemlock post marked SW 1/16 S8 253

Thence I run S 89° 39' W on the true E & W center line of the S.W.¼ of section 8. Approximately level.

At 400 ft. begin medium ascent on north slope.

At 1258.0 ft. the S 1/16 S 7 & 8, described above.

Survey completed 10/21/58

From ¼ S 8 & 17 the bearing of the N & S center line of section 8 was computed to be N 1° 30' E., 2586.4 ft. to the center ¼ corner, described above, 5229.9 ft. to ¼ S 5 & 8 described above.

*U. J. Hazard*