

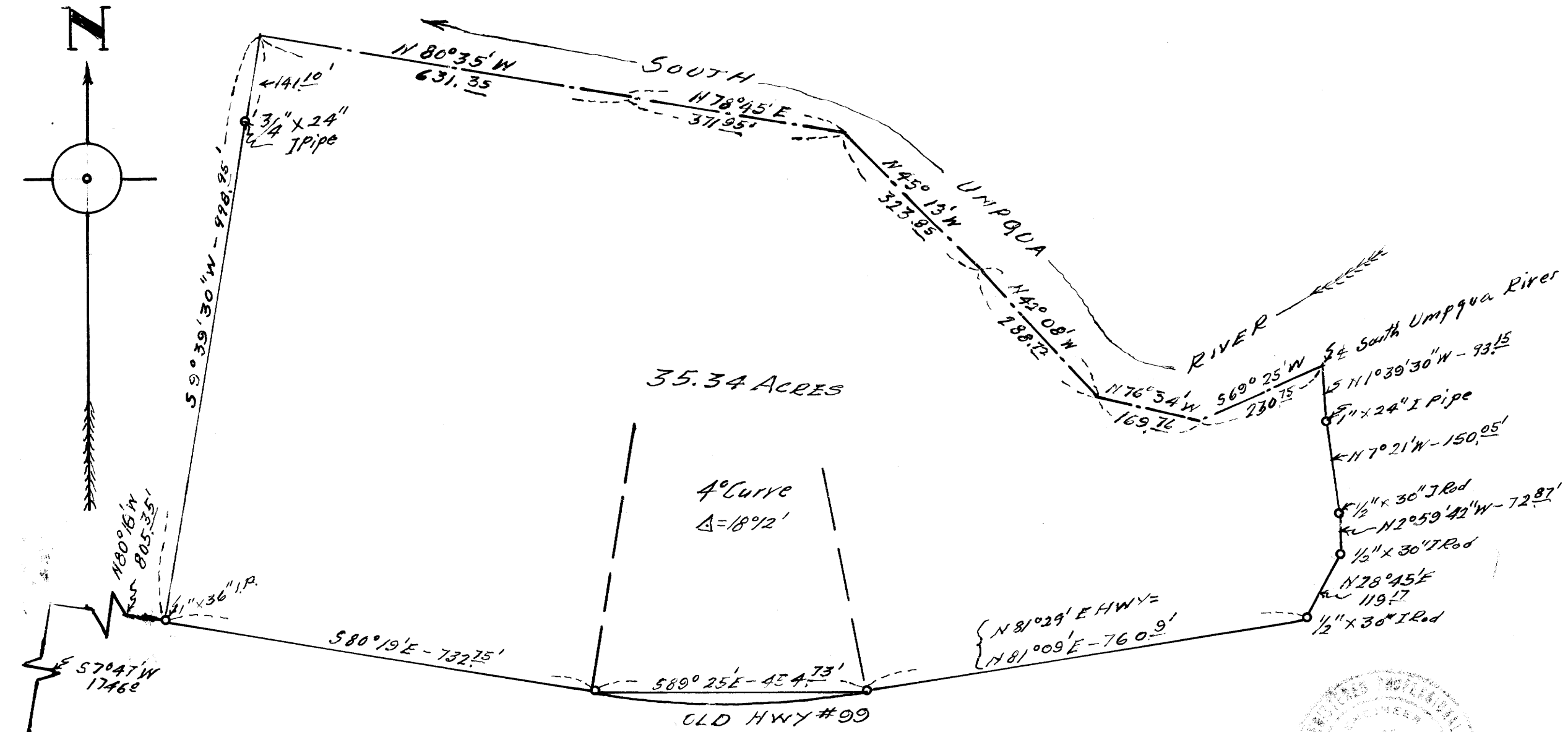
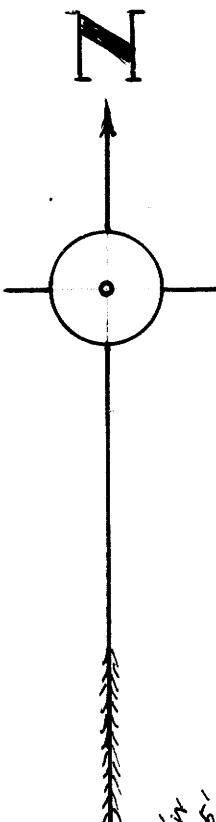
FILED
RECEIVED

NOV 6 1958

COUNTY SURVEYOR
DEPT. 13, COUNTY, ORE.

MAP
OF
ALVIN HELGESON RANCH
IN
Section-12 Tp.29S-Rg.6W WM.
Scale- 1"=200' NOV.-1958.

C.S. 40/462-3

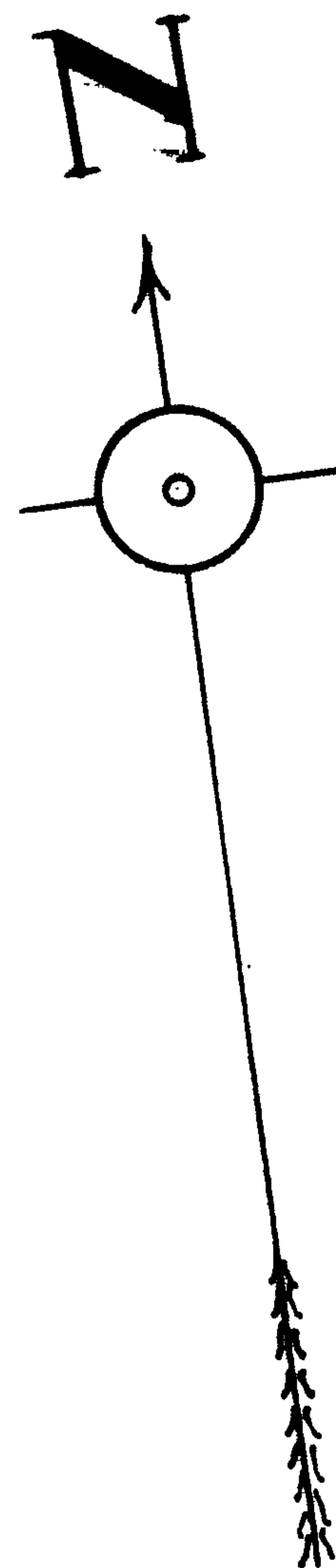


M 13-11

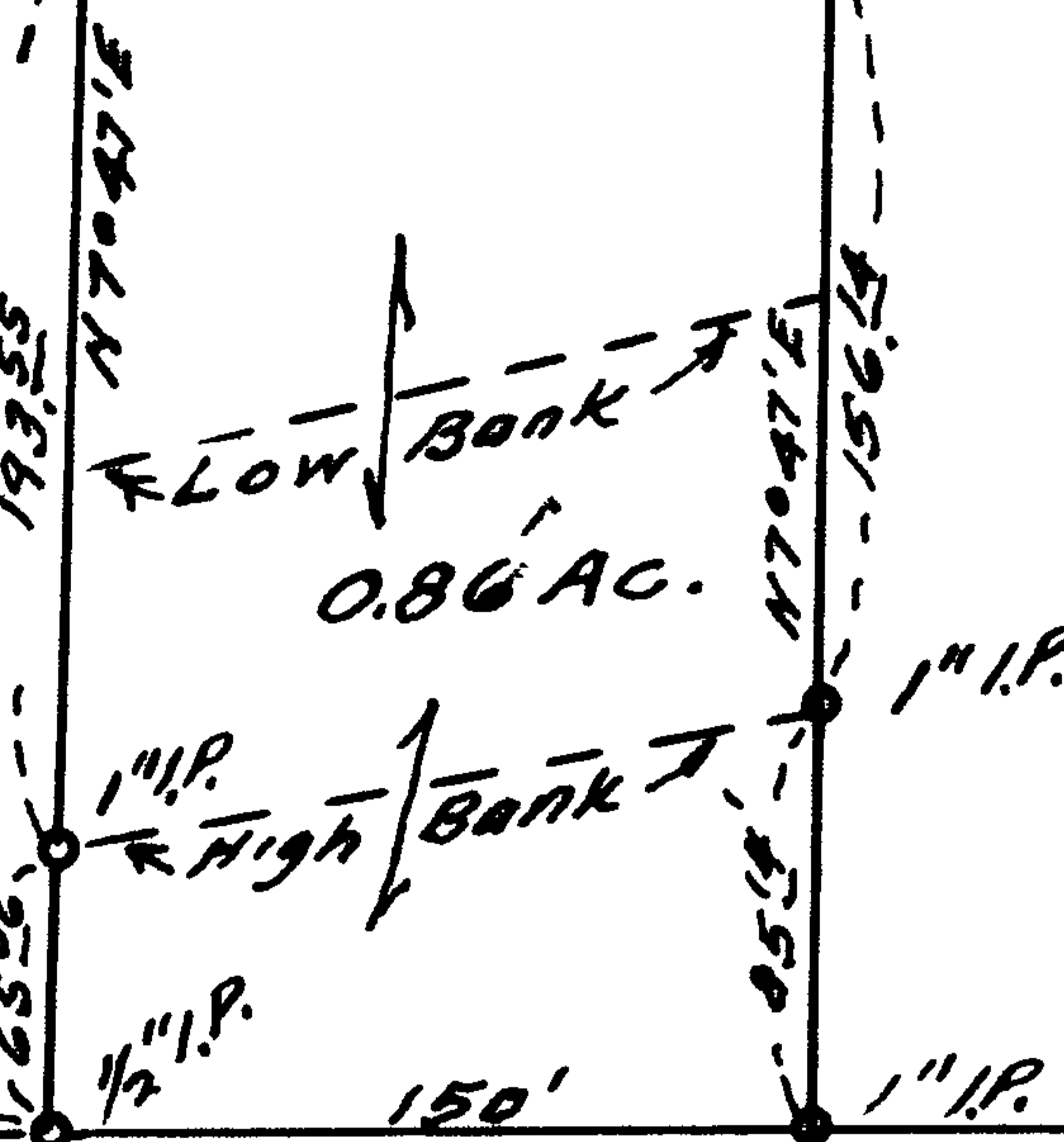
11 12
14 13 Tp. 29S-Rg 6W
WM.

COUNTY SURVEYORS FILE DAY
DO NOT REMOVE FROM OFFICE





SOUTH-UMPQUA-RIVER



130° 150' 150' 150' 583° 08' E 30'

Easement Road

To HWY 99 Easement Road

MAP
OF
PORTION OF HELGESEN RANCH
IN
SECTION 12-TP. 29 S-RG. 6 W WM.
SCALE - 1" = 100'.
DEC. 1953.

N 79° 43' W
200'



Cor. Sec 11-12-13 & 14
Tp. 29 S-Rg 6 W WM.

COUNTY SURVEYORS FILE DATA
DO NOT REMOVE FROM OFFICE



C. S. File No. 40/462-3
40/462-3 P

CS FILE FOLDER

CONTAINS

MORE

INFORMATION