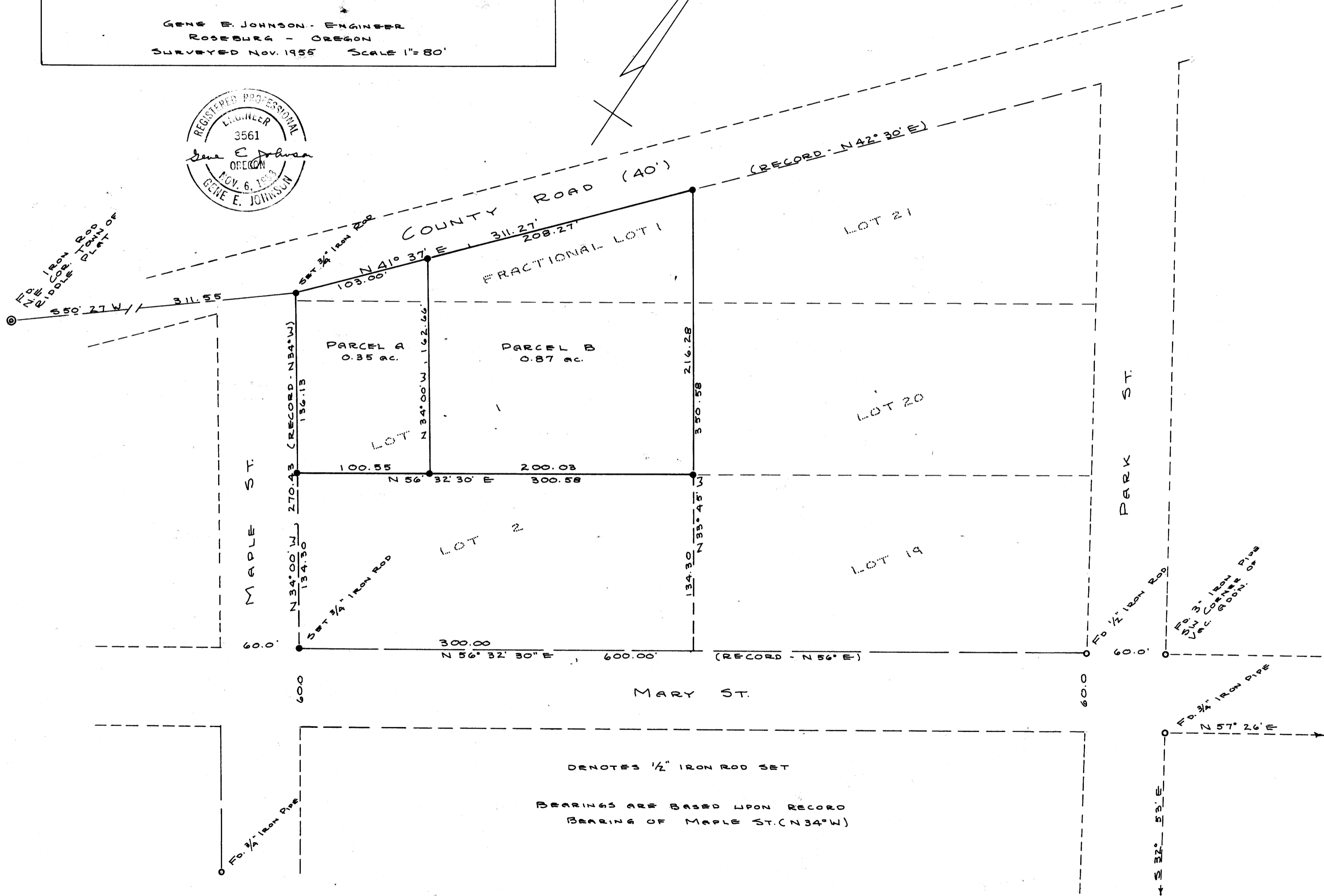
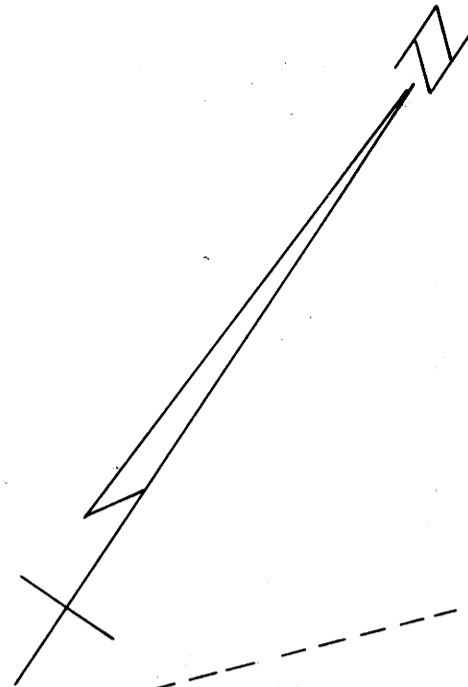
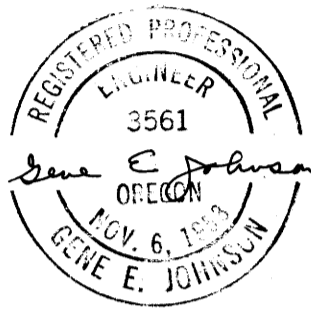


SURVEY FOR CORRECTION DEED
 AND TO ESTABLISH PROPERTY CORNERS
 IN LOT 1 AND FRACTIONAL LOT 1
 MAPLE PARK ADDITION TO RIDDLE
 SEC. 24, T30S, R6W, W.M., DOUGLAS COUNTY, ORE.
 FOR: C.E. LOGSDON

GENE E. JOHNSON - ENGINEER
 ROSEBURG - OREGON
 SURVEYED NOV. 1955 SCALE 1"=80'

COUNTY SURVEYORS WILL NOT
 DO NOT REMOVE FROM OFFICE

FILED
 RECEIVED
 NOV 23 1955
 COUNTY SURVEYOR
 DOUGLAS COUNTY, ORE.



DENOTES 1/2" IRON ROD SET
 BEARINGS ARE BASED UPON RECORD
 BEARING OF MAPLE ST. (N 34° W)

C.S. FILE NO. 42/31
 M 12-78

C.S. FILE NO. 42/31

M 12-78