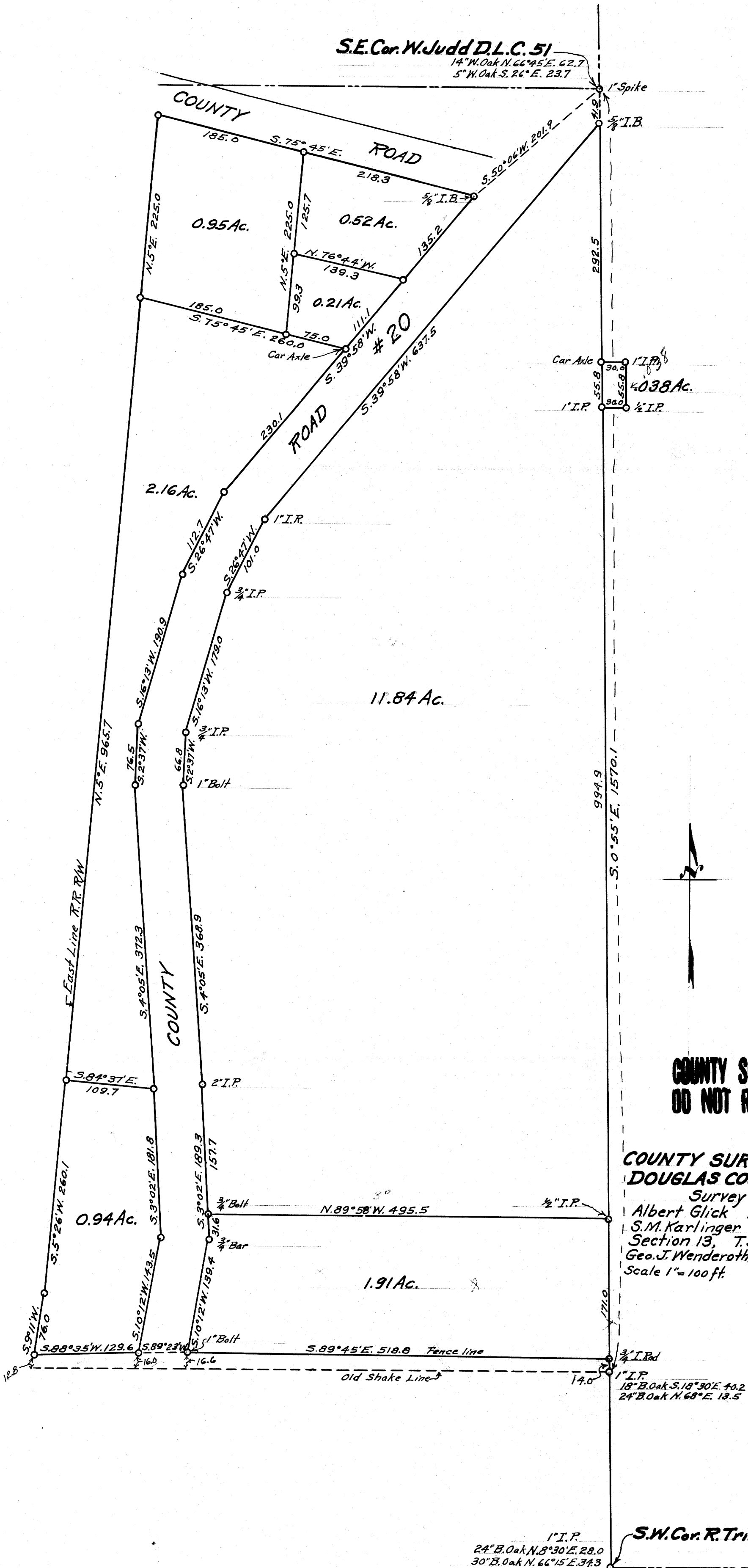


S.E. Cor. W. Judd D.L.C. 51

14" W. Oak N. 66° 45' E. 62.7
5" W. Oak S. 26° E. 23.7



**COUNTY SURVEYORS FILE DATA
DO NOT REMOVE FROM OFFICE**

**COUNTY SURVEYOR'S OFFICE
DOUGLAS COUNTY OREGON**

Survey for
Albert Glick August 1948
S.M. Karlinger April 1949
Section 13, T.30S., R.6W., W.M.
Geo. J. Wenderoth, Deputy Co. Surveyor.
Scale 1" = 100 ft.

S.W. Cor. R. Trimble D.L.C. 52

1" I.P.
24" B. Oak N. 8° 30' E. 28.0
30" B. Oak N. 66° 15' E. 34.3