

M12-67
C.S. FILE

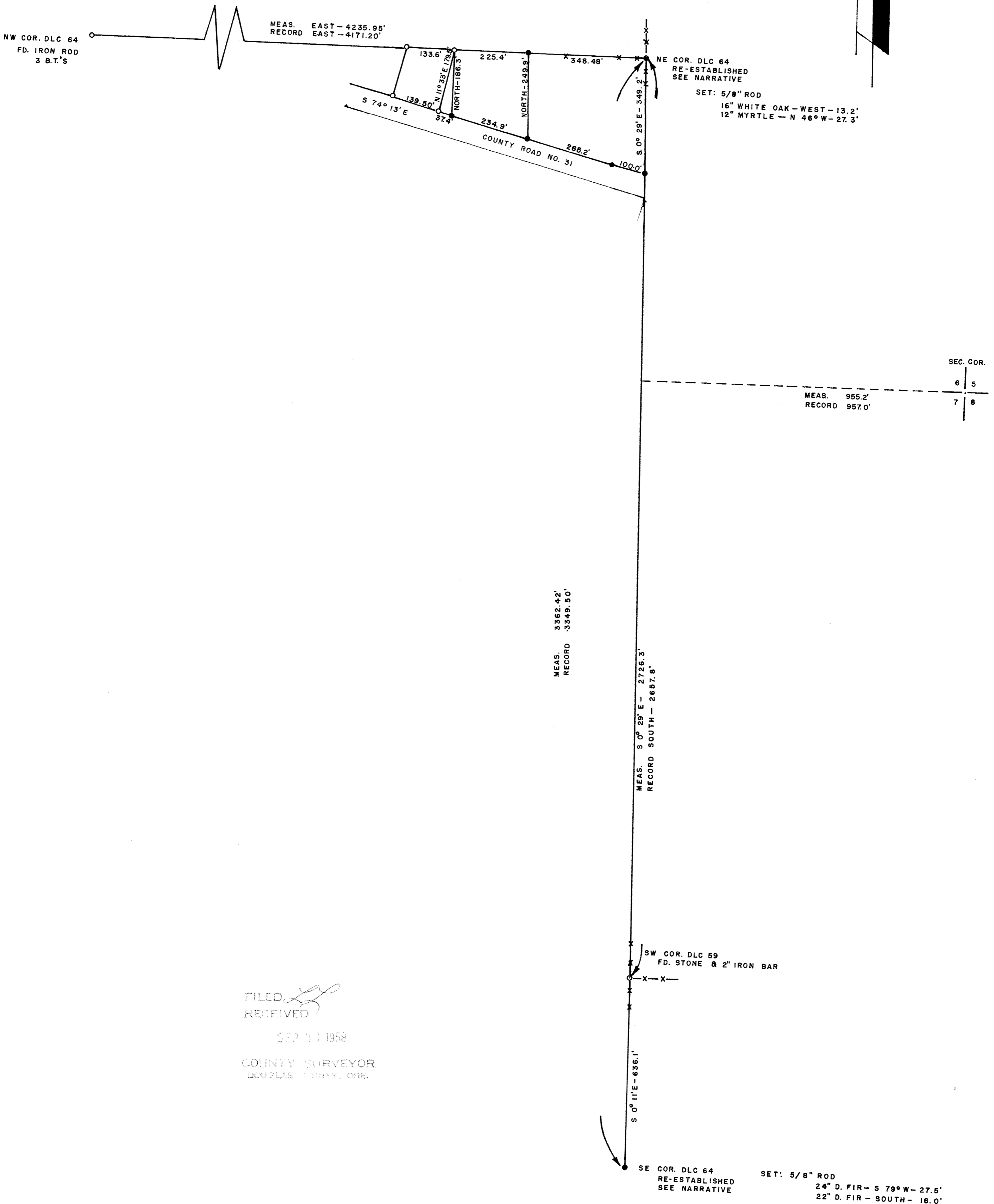
COUNTY SURVEYOR
DO NOT REMOVE FROM FILE

SURVEY OF C.W. HAGEN & BESSIE SMITH PROPERTY SEC. 6, T27S, R6W, DOUGLAS COUNTY, ORE.

SURVEYED FOR: BESSIE SMITH
SURVEYED BY: G. R. LECKLIDER - ENG'R.

SEPTEMBER, 1958
SCALE: 1" = 200'

- DENOTES CORNERS FOUND
- DENOTES CORNERS SET



FILED
RECEIVED
SEP 30 1958
COUNTY SURVEYOR
DOUGLAS COUNTY, ORE.

C.S. FILE 42 323
Map File M12-67

SURVEY OF
C.W. HAGEN & BESSIE SMITH PROPERTY
SECTION 6, T 27 S, R 6 W, DOUGLAS COUNTY, OREGON
SURVEYED FOR: BESSIE SMITH SEPTEMBER, 1958
SURVEYED BY: G. R. LECKLIDER --- ENGINEER

This survey commenced at the Northwest corner of the Charles LaPoint DLC No. 64, which is an iron rod with 3 bearing trees described in the renewed corners file of the Douglas County Surveyor's Office; thence running East to find the Northeast corner of DLC No. 64, which is obliterated, but a fence corner with fences running North, South & West has been accepted for many years by the old timers and which they state that this was the location of the DLC corner common to DLC No. 64 and DLC No. 57. The bearing and distance between these points is East-4238.95 feet (Record: East-4171.20 feet) being 67.75 feet longer than record.

Thence I ran Southerly: At 978.25 feet (Record: 990.00 feet) the section corner common to 5,6,7 & 8 bears East 955.2 feet (Record: 957.0 feet); At 2726.3 feet I found a 2" red at a fence corner (the fences run North, South & East) with a broken stone next to it with definite chisel marks visible. I accepted this as the Southwest corner of DLC 59 and found the line from this corner to the fence corner at the Northeast corner of DLC No. 64 to be N 00° 29' W-2726.3 feet (Record: 2657.8 feet). Upon examination of the records in the county surveyor's office I found that on April 5, 1893 W. F. Briggs-Surveyor found this line to be 2697.42 feet and the Government Plat shows this line to be 2745.60 feet.

Continuing Southerly at 3362.4 feet I found 3 stones leaning against each other, in dense growth of rose bushes, as if they had been placed around a post at one time and these were the only stones in the immediate area from which a 64" White Oak bears S 84° E-380.3 feet (Record: S 86° E-434.94 feet) which has an old catface on the West side. When I cut into this tree only the outer 8 to 10 inches were sound--the center being rotten powdered wood, so no scribe was visible. I found the distance from these stones to the fence corner at the Northeast corner of DLC No. 64 to be 3362.42 feet (Record: 3349.50 feet) being 12.92 feet longer than record. The bearing from this point to the Southwest corner of DLC No. 59 is N 00° 11' W.

~~East 4238~~

I accepted the stones as the Southwest corner of DLC No. 64 because they fit the overall conditions better in both latitude and departure than a point set record bearing and distance from the 64" White Oak. I set a 5/8" X 40" rod at this point and surrounded with the 3 stones from which: A 24" Douglas Fir bears S 79° W-27.5 feet and a 22" Douglas Fir bears South-16.0 feet and both marked "DLC 64 BT").

I also accepted the fence corner for the Northeast corner of DLC No. 64 because of the common acceptance for many years and it fits the conditions as well as can be expected considering that in most cases it is within the allowable errors permitted in the original surveys. I set a 5/8" X 36" rod at this point from which a 16" White Oak bears West-13.2 feet, marked "DLC 64 BT", and a 12" Myrtle bears N 46° W-27.3 feet, marked "DLC 57 BT".

FILED
RECEIVED

SEP 30 1958

COUNTY SURVEYOR
DOUGLAS COUNTY, ORE.

C.S. File.....421393

Map File M.12T.67

