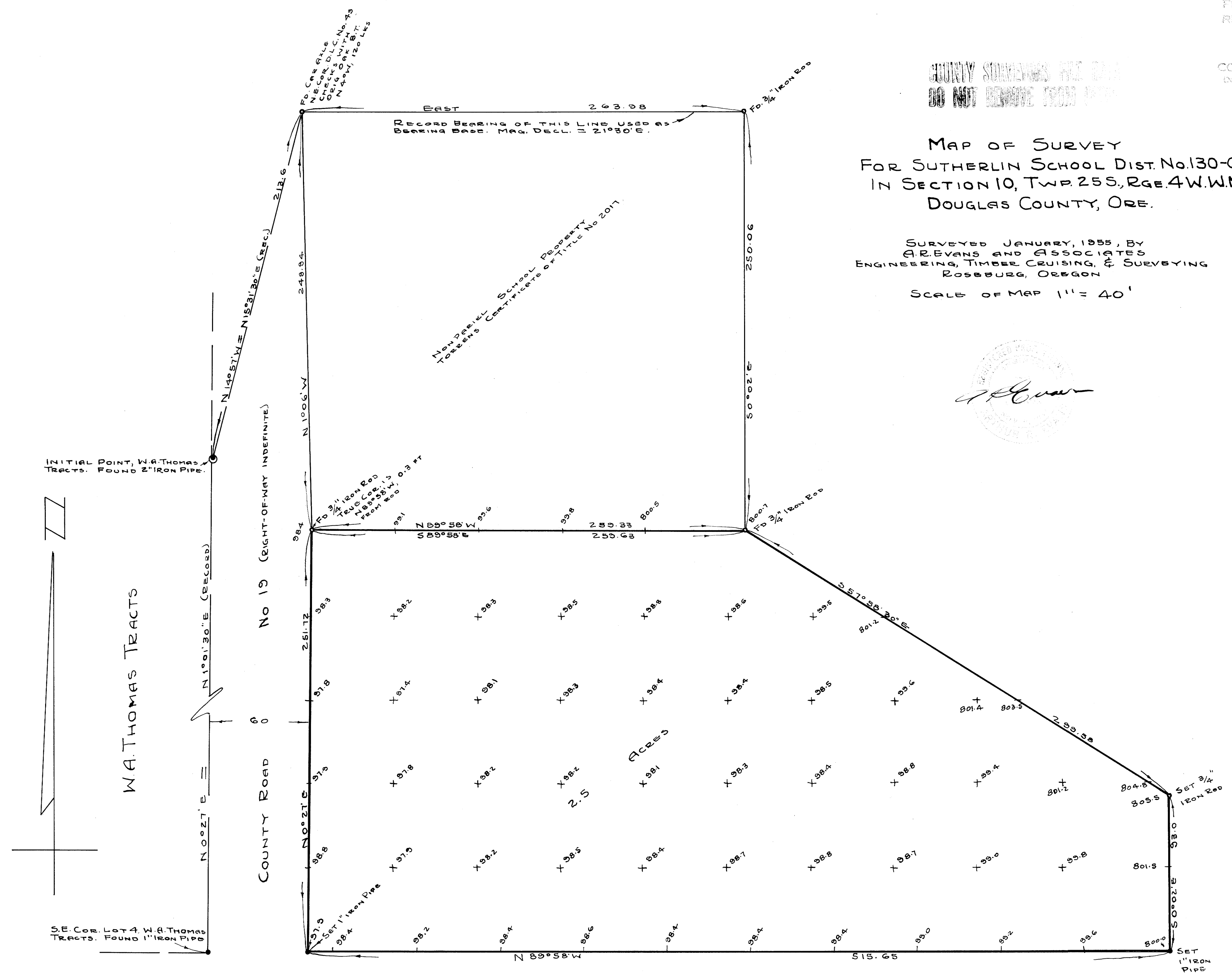


M/2-66

COUNTY SURVEYORS FILE 213
DO NOT REMOVE FROM OFFICE

MAP OF SURVEY
FOR SUTHERLIN SCHOOL DIST. No. 130-C
IN SECTION 10, TWP. 25S, RGE. 4W.W.M.
DOUGLAS COUNTY, ORE.

SURVEYED JANUARY, 1955, BY
A. REEVES AND ASSOCIATES
ENGINEERING, TIMBER CRUISING, & SURVEYING
ROSEBURG, OREGON
SCALE OF MAP 1" = 40'



NOTE: DATUM ASSUMED. TO ALL ELEVATIONS
SHOWN THUS - 90.0 - ADD 700.
GRID INTERVAL = 50 FT.