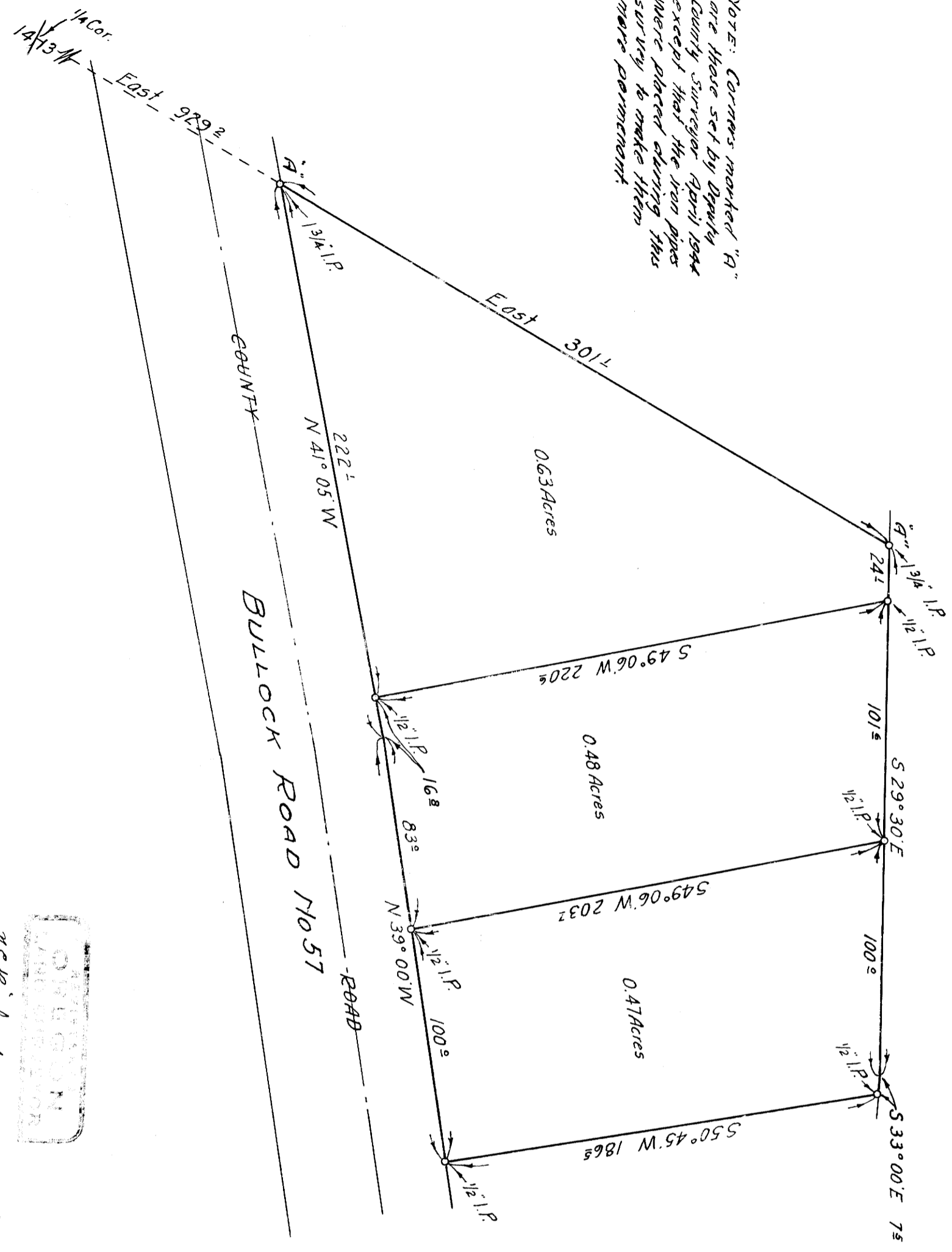


NOTE: Corners marked "A" are those set by Deputy County Surveyor April 1944 except that the iron pipes were placed during this survey to make them more permanent.



N.E. RICHARDSON
 COUNTY SURVEYOR
 DEPUTY COUNTY SURVEYOR
 N.E. RICHARDSON
 515

COUNTY SURVEYOR'S OFFICE
 DEPUTY COUNTY SURVEYOR

COUNTY SURVEYOR'S OFFICE
 DOUGLAS COUNTY, OREGON
 SURVEY OF
 SMALL TRACTS IN LOT 7,
 SECTION 13, T24S, R17W, W1M
 BEN. B. LEVING
 COUNTY SURVEYOR.
 N.E. RICHARDSON
 DEPUTY COUNTY SURVEYOR.
 SCALE 1" = 50'
 AUGUST 12, 1946.