

COUNTY SURVEYORS FILE DATA  
DO NOT REMOVE FROM OFFICE

MAP FILE M 12 - 56

Cantleberry & R. Head Feb. 1949  
Oscar Head, Sept. 1958

Geo. J. Wenderoth

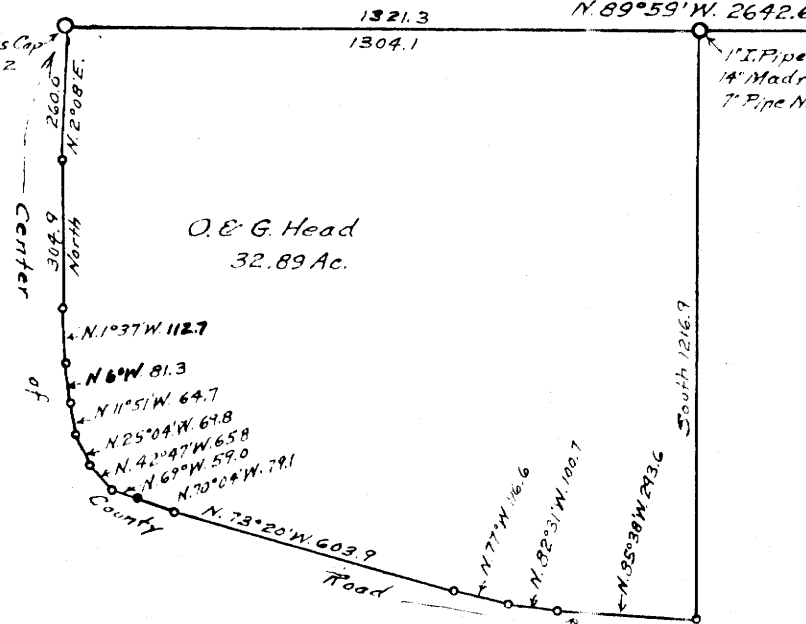
COUNTY SURVEYOR'S OFFICE  
DOUGLAS COUNTY, OREGON.  
Surveys in  
SECTION 34, T. 31 S., R. 4 W. W.M.  
Geo. J. Wenderoth, Deputy

Scale 1" = 400'

26' Fir N. 62° W. 23.7  
14' Fir N. 75° E. 29.7  
15' Cedar S. 40° E. 23.1  
10' Fir N. 49° 55' E. 34.2  
9' Fir S. 81° 12' E. 49.6  
8' Cedar S. 25° 44' W. 34.3  
1 1/2" I.P. Pipe

28 27  
33 34  
1" I.P. Pipe  
10' Fir N. 21° 45' E. 24.7  
16' Fir S. 81° 30' E. 20.0  
16' Fir N. 45° 26' W. 9.5  
18' Fir S. 57° 04' W. 35.4

1" Pipe with Brass Cap  
16' Gate Post S. 85° 31' E. 37.2  
12' Fir N. 28° W. 49.3



27 26  
34 35

1320.25  
Draw  
N. 0° 03' W. 2640.5

1" I.P. Pipe  
14' Fir N. 47° E. 12.2  
8' Fir N. 32° 40' W. 30.7  
Top Ridge

Top Ridge

1320.25

1" I.P. Pipe  
40' Fir N. 60° 12' W. 52.1  
14' Fir S. 6° 06' E. 54.0

THIS COPY MADE FROM  
A XEROX 2510

DATE 3-30-89

34 35  
3 2  
Car Axle  
7' Fir S. 62° E. 59.8  
8' Fir N. 39° 30' E. 171.9

FILED  
RECEIVED

SEP 22 1958

COUNTY SURVEYOR  
DOUGLAS COUNTY, ORE.

PRINT AT:  
(SP 40 SHADE 3)

MAP FILE M 12 - 56