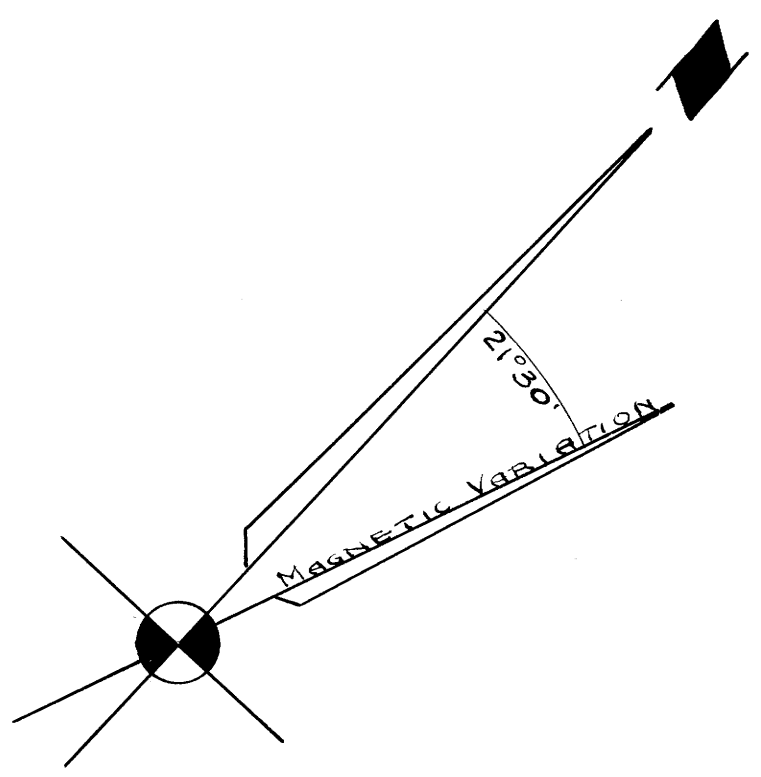
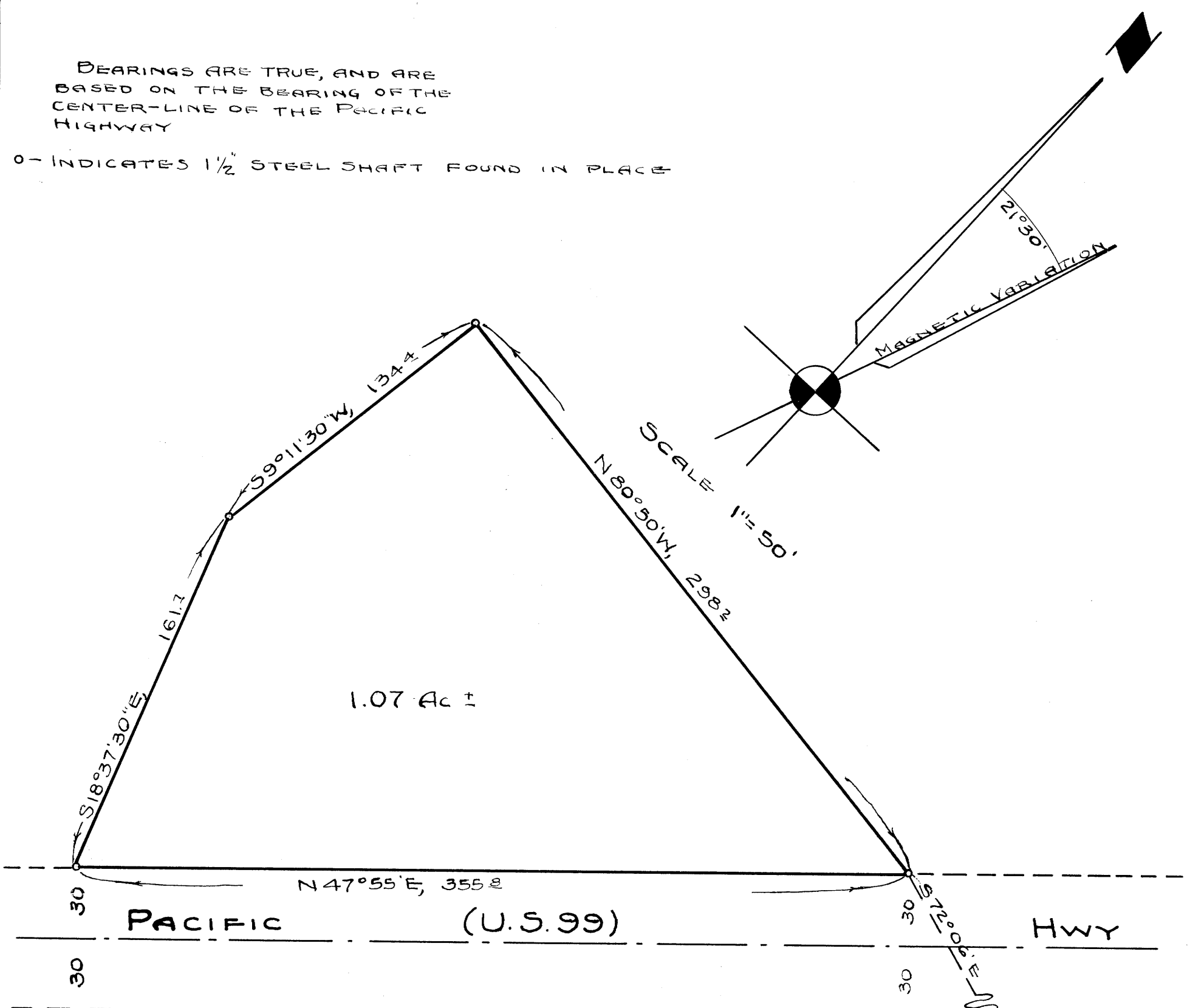


M 12-54  
C.S. FILE 49/63

BEARINGS ARE TRUE, AND ARE BASED ON THE BEARING OF THE CENTER-LINE OF THE PACIFIC HIGHWAY

o- INDICATES 1/2" STEEL SHAFT FOUND IN PLACE



SCALE 1" = 50'

1.07 Ac ±

PACIFIC

(U.S. 99)

Hwy

S.E. COR. ROBT. SMITH  
D.L.C. No 47, FD ORIGINAL  
STONE FOR CORNER, 10"x10"x15"  
MARKED WITH "X" & "47"  
BLAZED & SCRIBED NEW B.T.S.  
18" PINE, N7°W, 21 1/4 FT.  
8" FIR, SOUTH, 16 1/2 FT.

REGISTERED  
OREGON  
LAND SURVEYOR  
N.E. Richardson  
JULY 7, 1954  
N.E. RICHARDSON  
35

COUNTY SURVEYOR'S OFFICE  
DOUGLAS COUNTY OREGON

# COUNTY SURVEYOR'S OFFICE DOUGLAS COUNTY OREGON SURVEY FOR DEED DESCRIPTION SECTION 28, T23S, R5W, WM.

BEN B. IRVING COUNTY SURVEYOR  
SURVEYED, SEPT. 25, 1950, BY  
N.E. RICHARDSON DEPUTY

C.S. FILE 49/63  
M 12-54