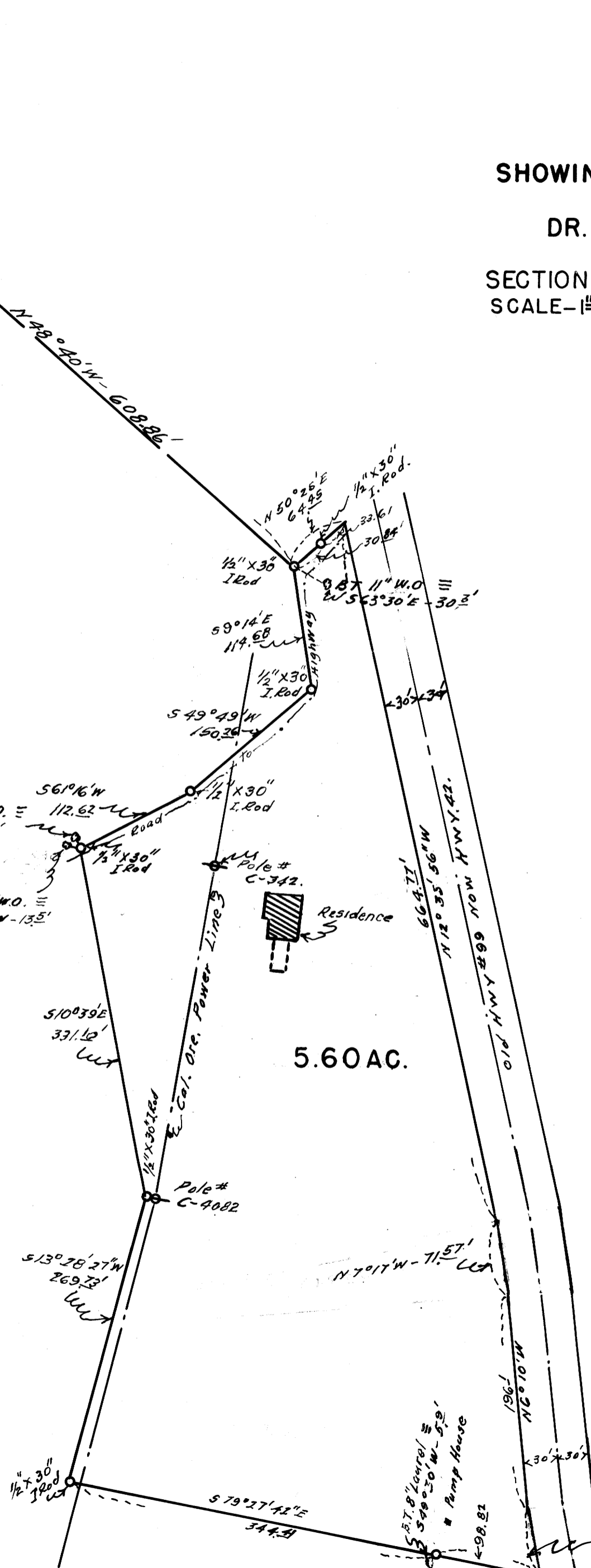
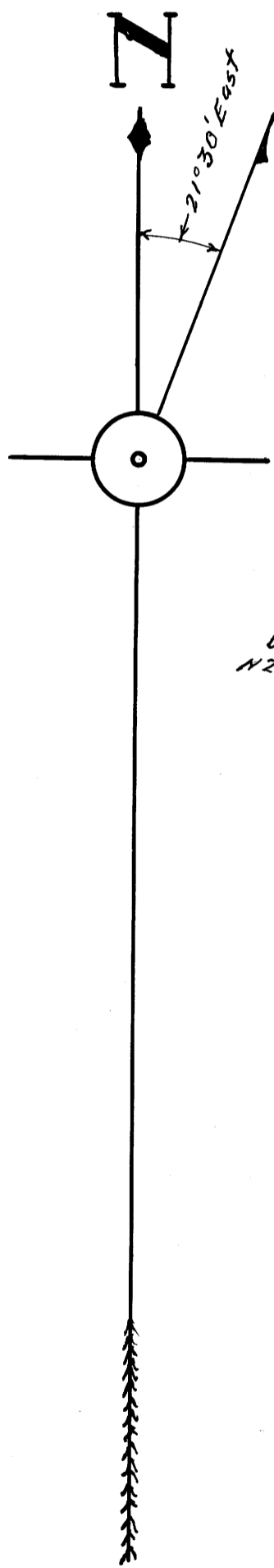


COUNTY SURVEYORS FILE DATA
DO NOT REMOVE FROM OFFICE

MAP
SHOWING LAND SURVEYED
FOR
DR. K.H. OAKLEY MD.

IN
SECTION-II TP.29S-RG.6W.WM.
SCALE-1"=100' JULY-1957.

1" Iron Pipe
Found
5/4 Cor. Sec. 2 & 11
Tp. 29S-Rg. 6W
W.M.



FILED
RECEIVED
SEP 2 1957
COUNTY SURVEYOR
TILLAMOOK COUNTY, ORE.