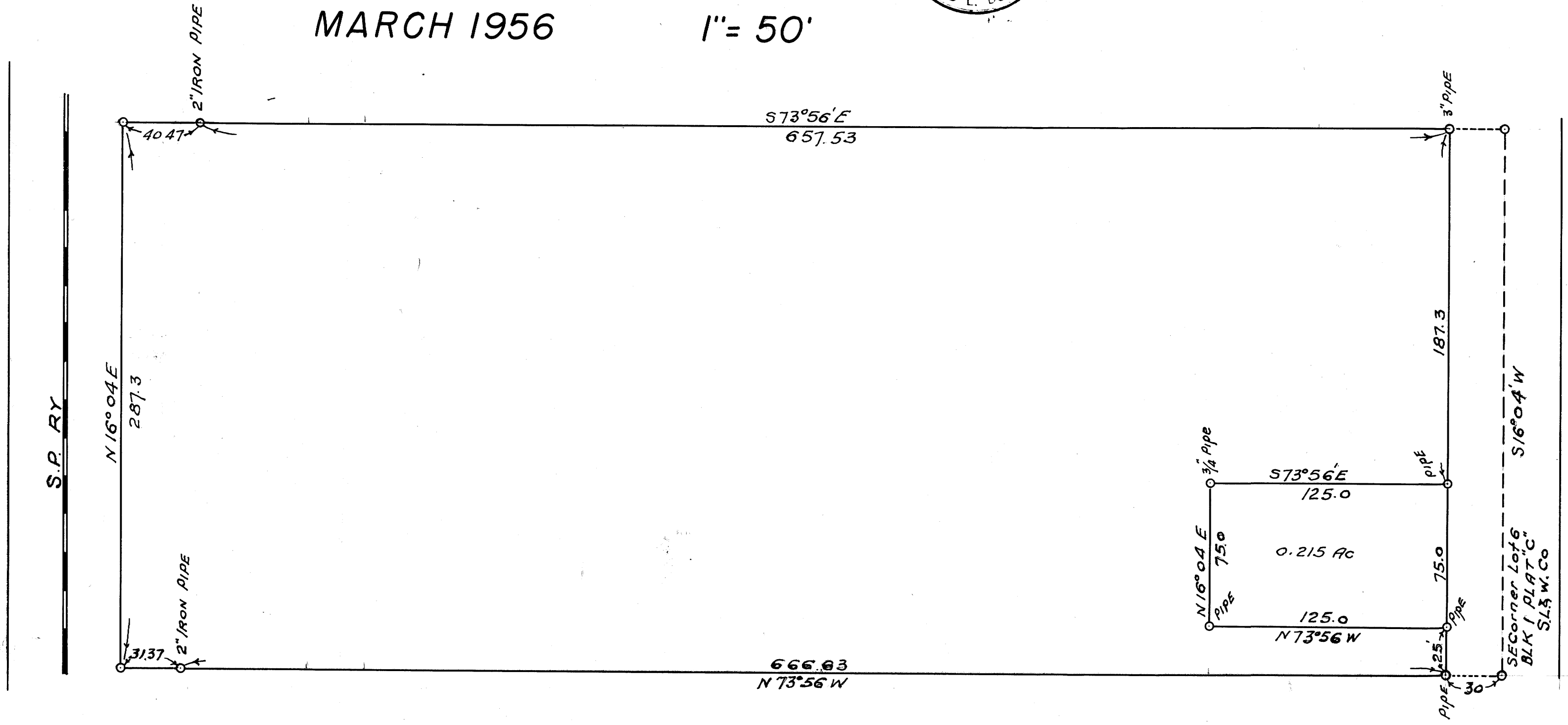
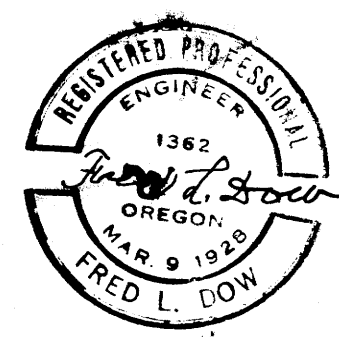


COUNTY SURVEYORS FILE DATA  
DO NOT REMOVE FROM OFFICE

SAM ROBINSON  
LOT 6, BLOCK 1, PLAT "C"  
S.L. & W. Co.  
MARCH 1956      1" = 50'



FILED  
RECEIVED  
APR 21 1958  
COUNTY SURVEYOR  
DOUGLAS COUNTY, ORE.

C.S. File 50.1.116  
Map File M.121.49

MAP FILE M.12-49