

COUNTY SURVEYOR FILE DATA
DO NOT REMOVE FROM OFFICE

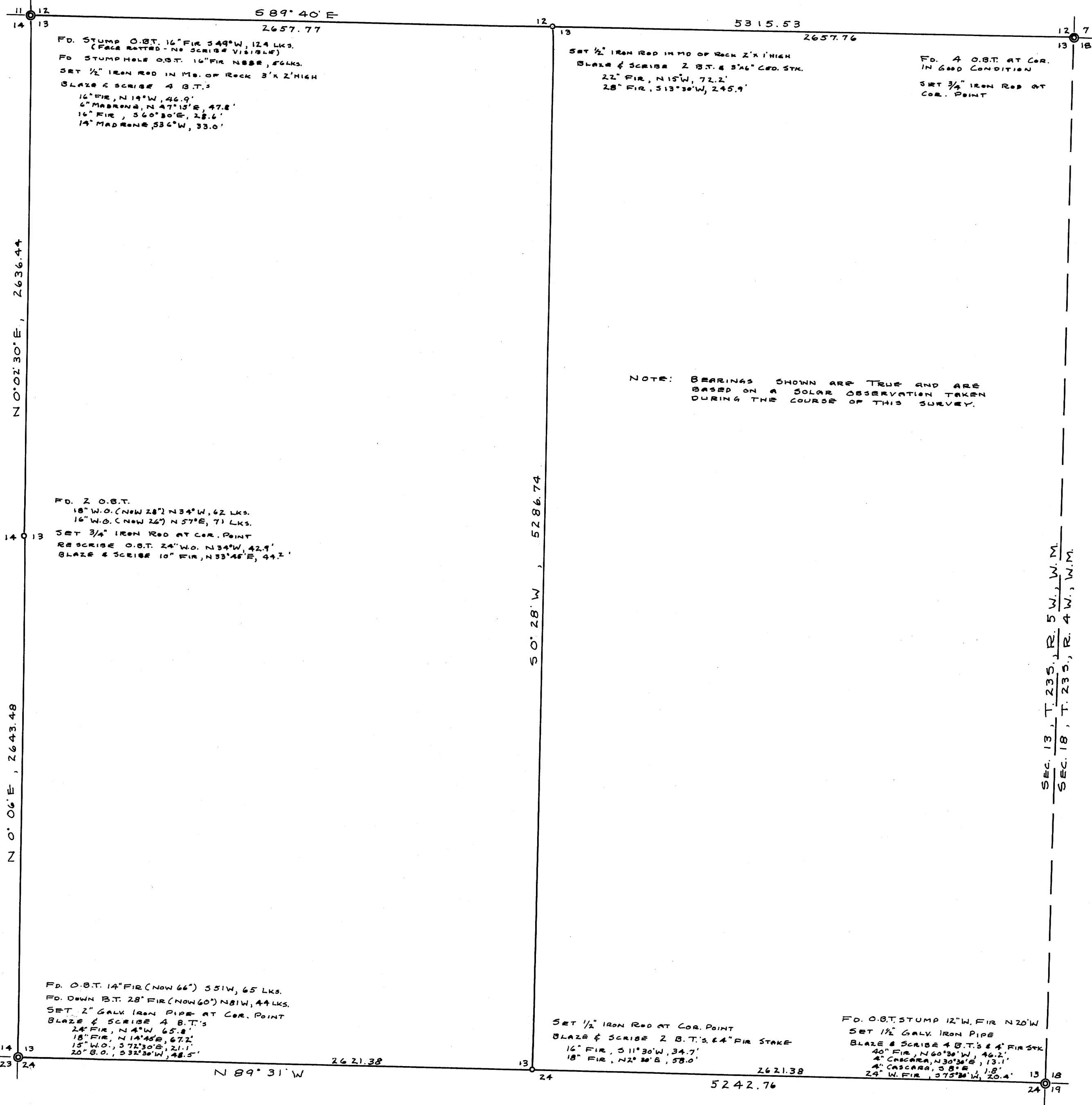
FILED
RECEIVED

NOV 24 1954

COUNTY SURVEYOR
DOUGLAS COUNTY, ORE.

SURVEY TO ESTABLISH N-S CENTER LINE
SECTION 13, T.23S., R.5W., W.M.
DOUGLAS COUNTY, OREGON
FOR
E. A. HOSTETLER

GRANT - EVANS & JOHNSON - ENGINEERS
ROSEBURG, OREGON
SURVEYED OCT. 1954 - SCALE 1"=400'



NOTE: BEARINGS SHOWN ARE TRUE AND ARE BASED ON A SOLAR OBSERVATION TAKEN DURING THE COURSE OF THIS SURVEY.

SEC. 13, T. 23S., R. 5W., W.M.
SEC. 18, T. 23S., R. 4W., W.M.