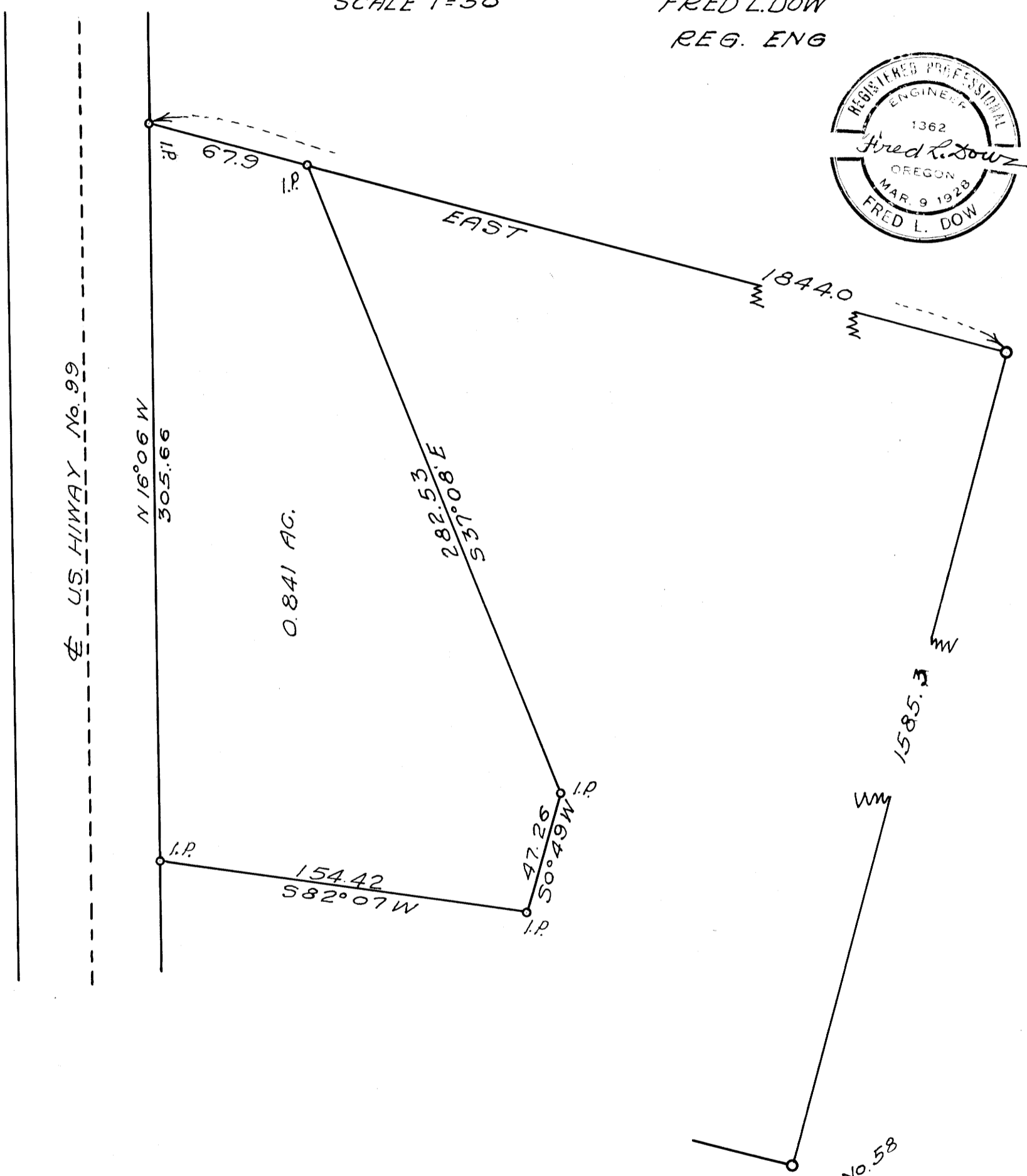


COUNTY CLERK'S OFFICE
DO NOT REMOVE FROM OFFICE



SURVEY FOR D.D. NORLUND
PART OF JACKSON REYNOLD D.L.C.
T. 30 S. R. 5 W. W.M. CANYONVILLE, ORE.
SEPT. 1948 SURVEYED BY
SCALE 1"=50 FRED L. DOW
REG. ENG



SE. COR. OF THE
JACKSON REYNOLD D.L.C. No. 58
T. 30 S. R. 5 W. W.M.