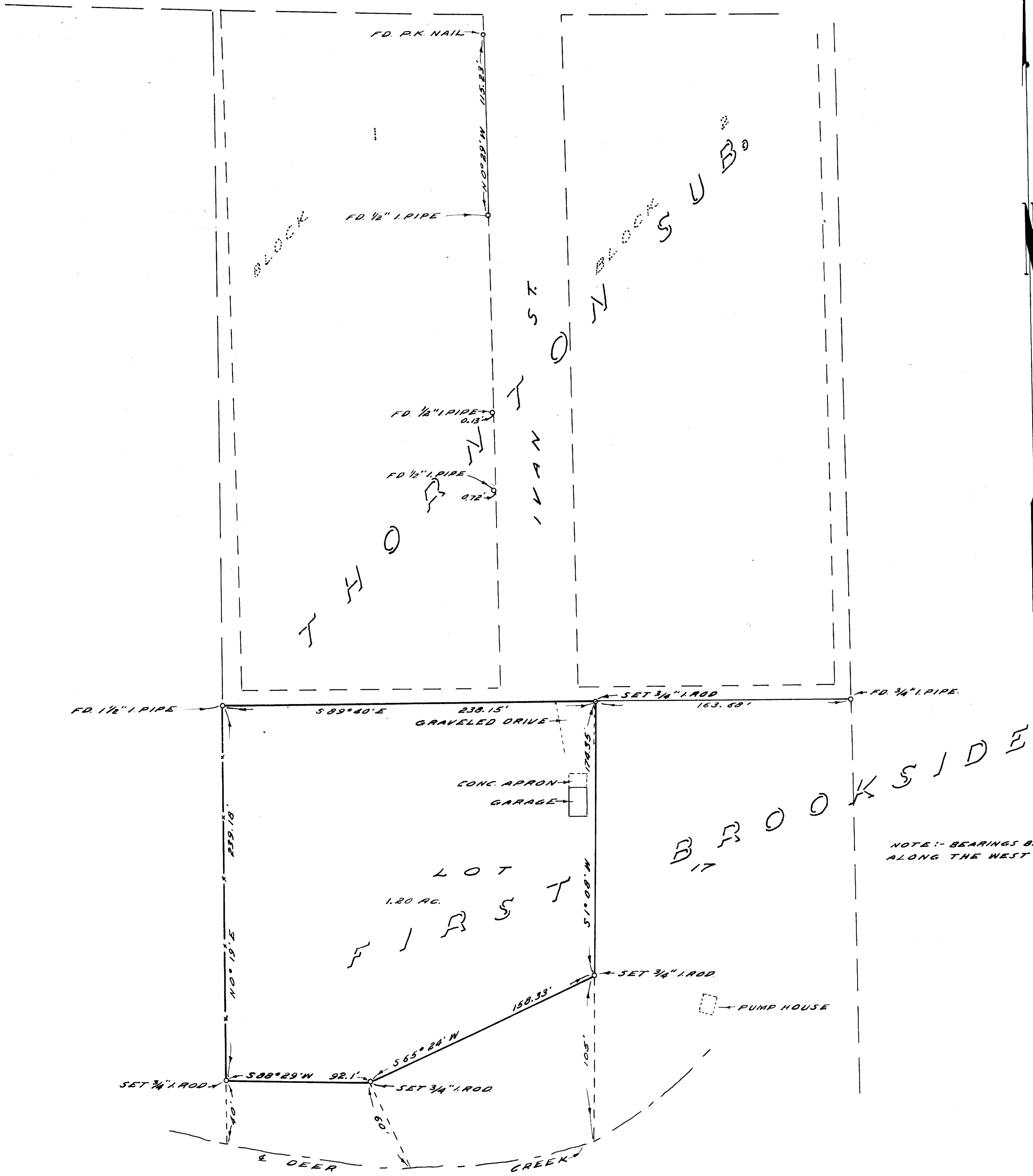


DIAMOND LAKE BLVD.



NOTE: - BEARINGS BASED ON N 0° 29' W
ALONG THE WEST LINE OF IVAN ST.

COUNTY SURVEYOR'S OFFICE
DOUGLAS COUNTY, OREGON

SURVEY FOR DEED DESCRIPTION,
LOT 17, FIRST BROOKSIDE ADDITION TO
ROSEBURG OREGON

FRED M. DARBY COUNTY SURVEYOR
SURVEYED JULY 22, 1958 BY
JAMES W. BYRON - DEPUTY SCALE 1" = 50'
SURVEYED FOR U. S. PLYWOOD CORP.

James W. Byron

COUNTY SURVEYING FILE DATA
DO NOT REMOVE FROM OFFICE

CS FILE FOLDER

CONTAINS

MORE

INFORMATION