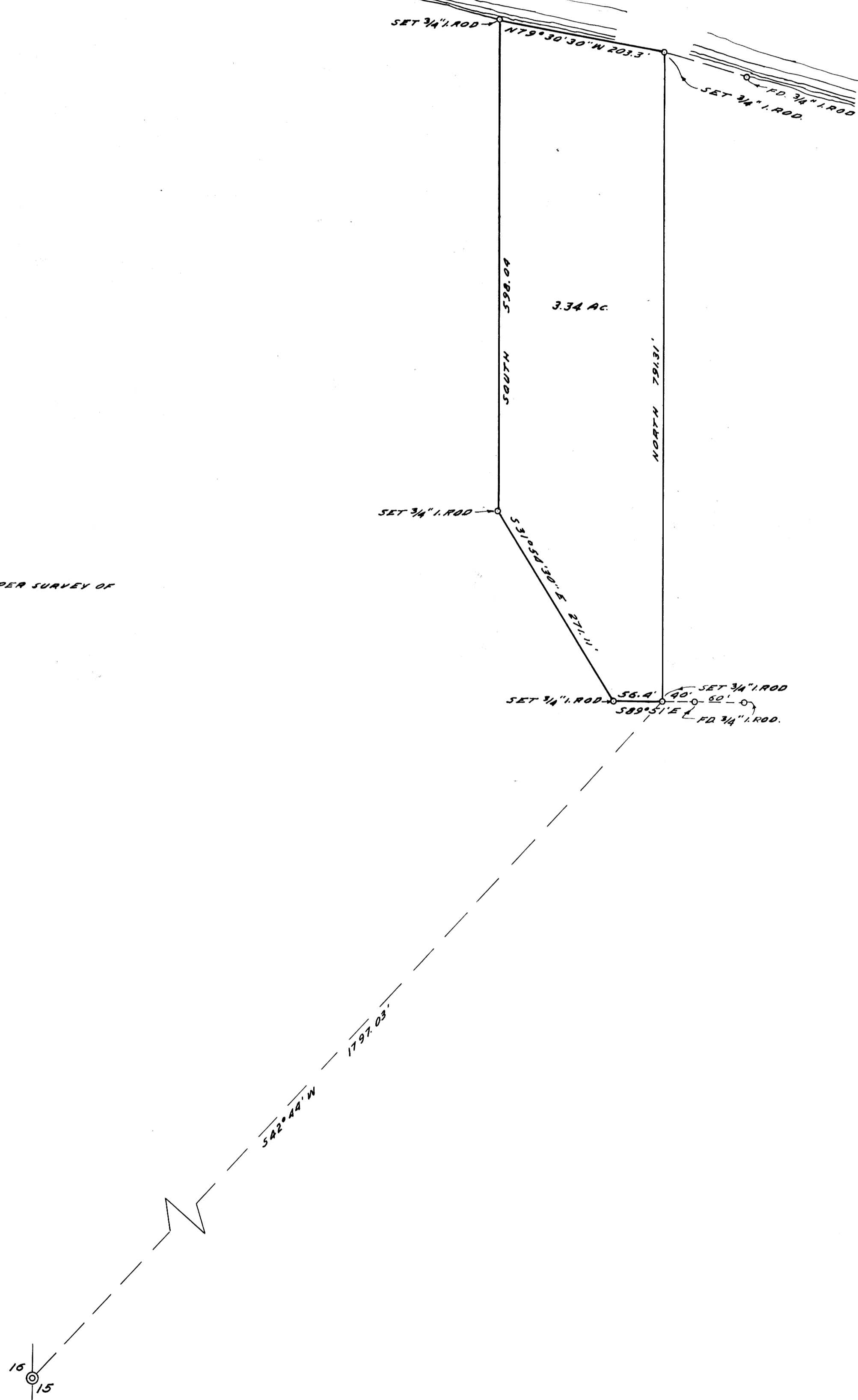


NOTE: BEARINGS ARE BASED ON "NORTH" AS PER SURVEY OF "WHISTLER'S BEND PLAT A"



COUNTY SURVEYOR'S OFFICE
DOUGLAS COUNTY, OREGON

SURVEY FOR DEED DESCRIPTION
SECTION 15, T26S, R4W, W.M.

FRED M. DARBY COUNTY SURVEYOR
SURVEYED JULY 23 1958 BY
JAMES W. BYRON - DEPUTY SCALE 1" = 100'
SURVEYED FOR WM. MAGNESS

REGISTERED
OREGON
LAND SURVEYOR
Fred M. Darby
MAY 7, 1954
FRED M. DARBY
320

COUNTY RECORDS FILE COPY
DO NOT REMOVE FROM OFFICE

CS FILE FOLDER

CONTAINS

MORE

INFORMATION