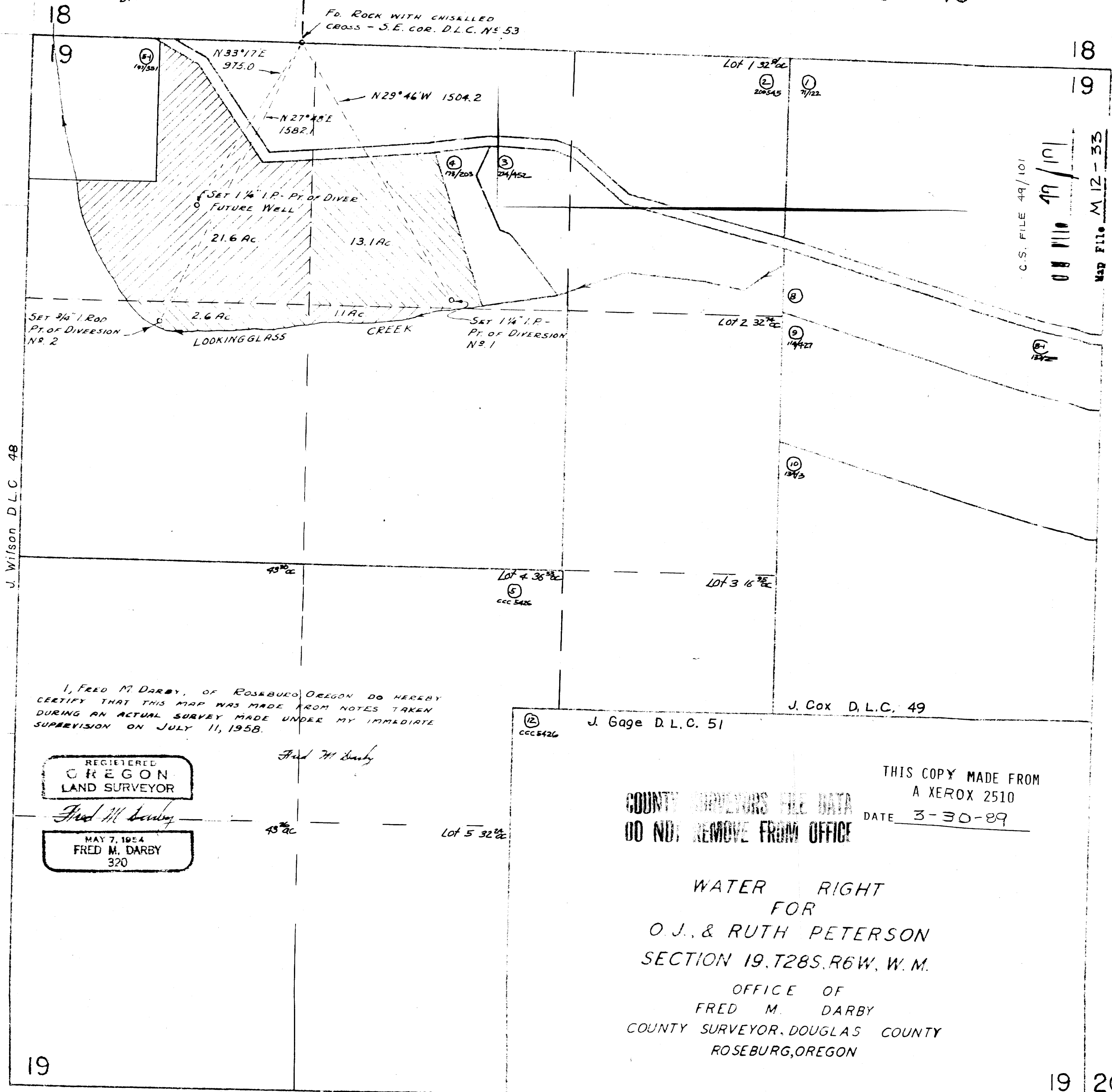


J. N. HARTIN  
D.L.C. No. 53

T28S R6W

SEC. 19



C.S. FILE 49/101  
08 110 49/101  
Map File M 12-33

J. Wilson D.L.C. 48

I, FRED M. DARBY, OF ROSEBURG OREGON DO HEREBY CERTIFY THAT THIS MAP WAS MADE FROM NOTES TAKEN DURING AN ACTUAL SURVEY MADE UNDER MY IMMEDIATE SUPERVISION ON JULY 11, 1958.

*Fred M. Darby*

REGISTERED  
OREGON  
LAND SURVEYOR

*Fred M. Darby*

MAY 7, 1954  
FRED M. DARBY  
320

J. Cox D.L.C. 49

J. Gage D.L.C. 51

THIS COPY MADE FROM  
A XEROX 2510  
DATE 3-30-89  
COUNTY SURVEYORS FILE DATA  
DO NOT REMOVE FROM OFFICE

WATER RIGHT  
FOR  
O.J. & RUTH PETERSON  
SECTION 19, T28S, R6W, W.M.  
OFFICE OF  
FRED M. DARBY  
COUNTY SURVEYOR, DOUGLAS COUNTY  
ROSEBURG, OREGON

19  
30

18 17  
19 20  
19 20  
30 29

CS FILE FOLDER

CONTAINS

MORE

INFORMATION