

COUNTY SURVEYORS FILE DATA
DO NOT REMOVE FROM OFFICE

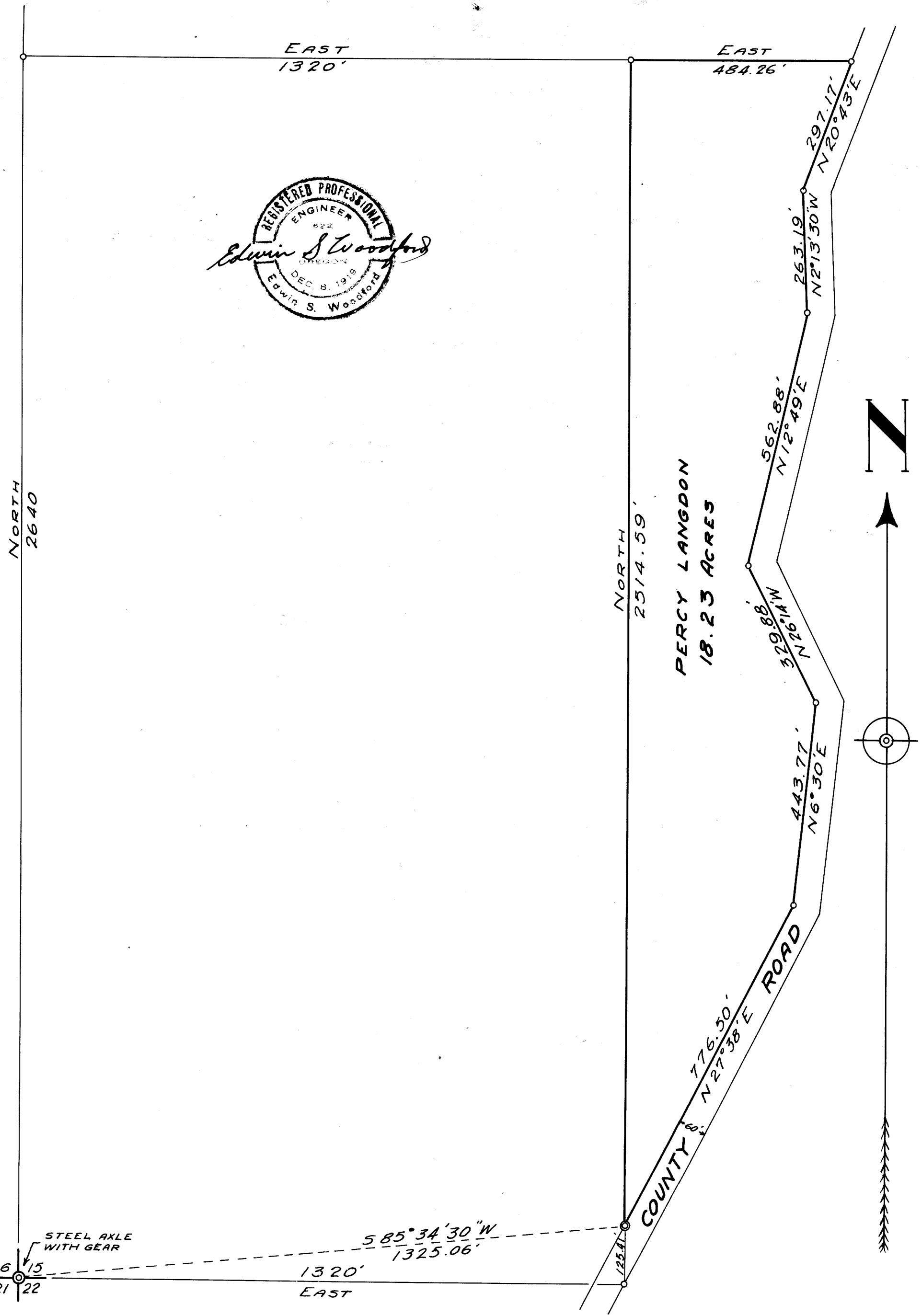
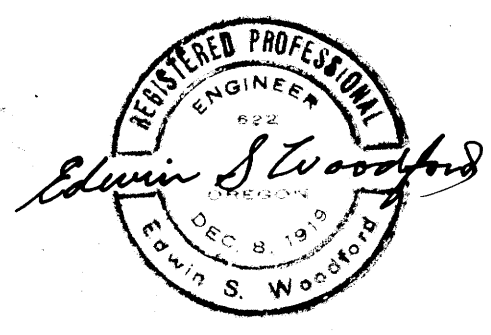
MAP OF

A PORTION OF SEC. 15, T23S, R4W, W.M.

SURVEYED FOR PERCY LANGDON
OCTOBER, 1947

SCALE - 1-inch = 200 ft.

FILED
RECEIVED
JUL 3 1948
COUNTY SURVEYOR
DEWITAS COUNTY, ORE.



40/139
M12-26

CS FILE FOLDER

CONTAINS

MORE

INFORMATION