

# ROY GORE

COUNTY SURVEYORS FILE DATA  
DO NOT REMOVE FROM OFFICE

DRAIN OREGON

SECTION 13 T.22S.R.6W.

MARCH 1952

FRED L. DOW

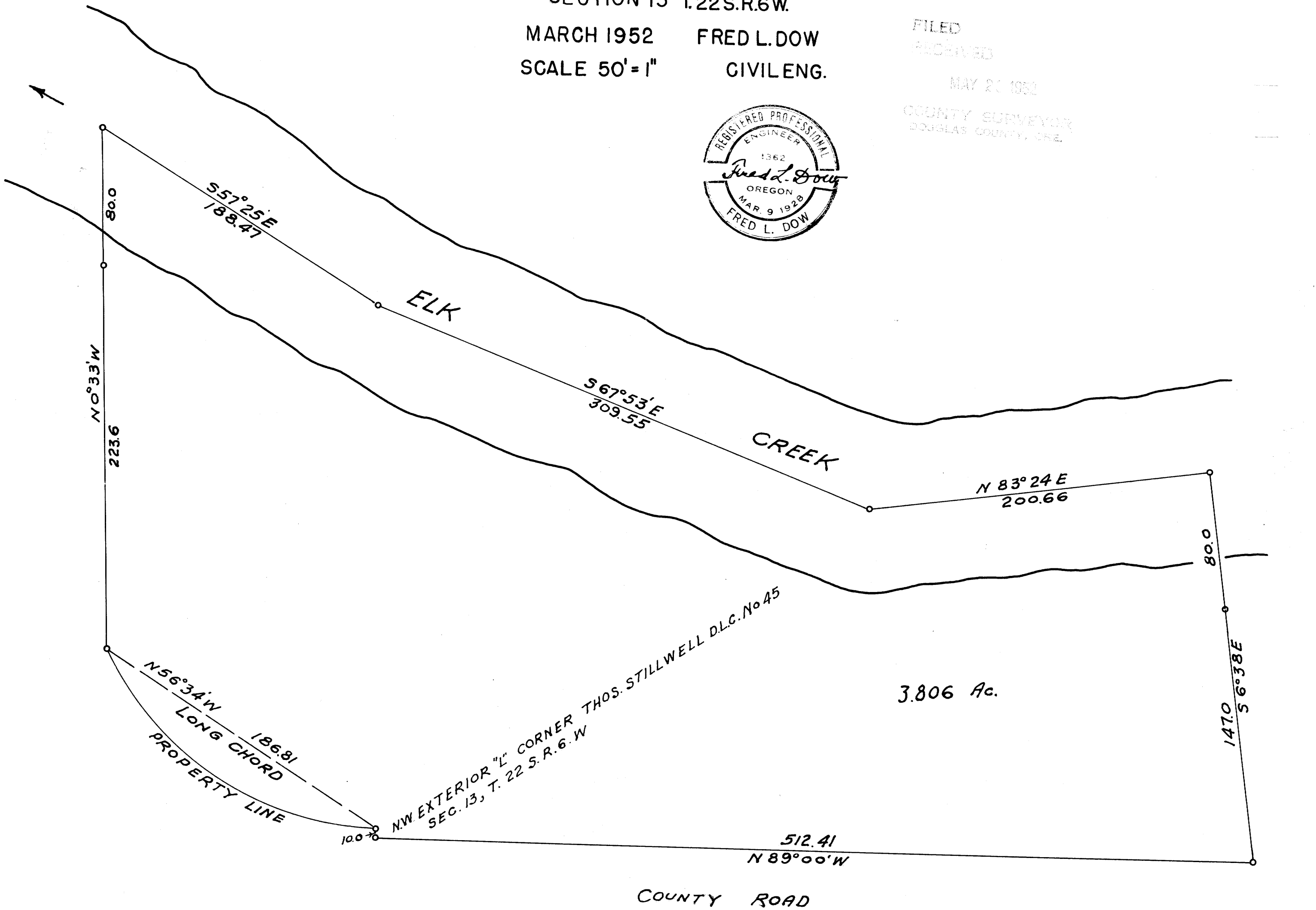
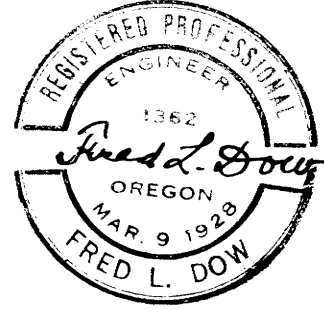
SCALE 50' = 1"

CIVIL ENG.

FILED  
RECEIVED

MAY 20 1952

COUNTY SURVEYOR  
DOUGLAS COUNTY, ORE.



C.S. FILE 41/42  
M 12 - 14