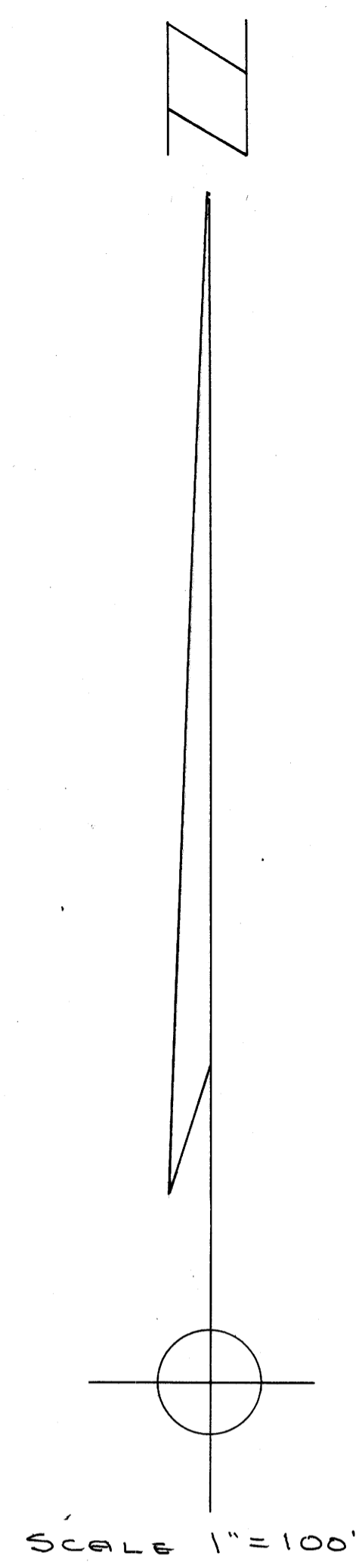
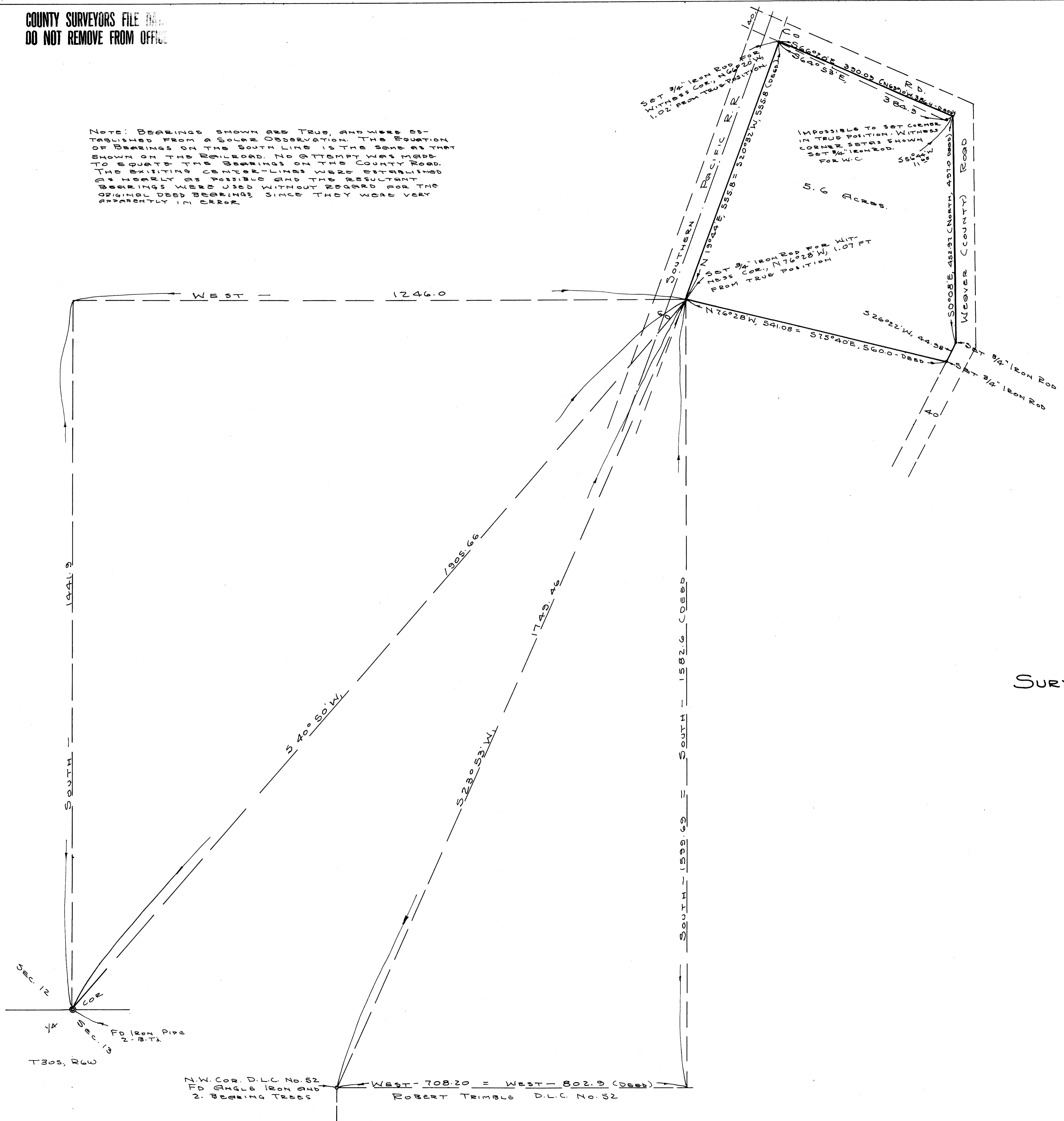


COUNTY SURVEYORS FILE
DO NOT REMOVE FROM OFFICE

Note: Bearings shown in table are shown in true, and were corrected from magnetic bearings shown in deed. It is noted that the bearings shown in deed are in error. The bearings shown in this deed were obtained from a survey made in 1953. The bearings shown in this deed were obtained from a survey made in 1953. The bearings shown in this deed were obtained from a survey made in 1953.



SURVEY TO CORRECT DEED DESCRIPTION
IN SECTION 12, T 30 S. R 6 W. W.M.
DOUGLAS COUNTY OREGON

GRANT AND EVANS, ENGINEERS
ROSEBURG OREGON
SURVEYED Nov. 13-14 - 1953

Sec. 12
COR
1/4
Sec. 13
FD Iron Pipe
2" B-T
T 30 S, R 6 W

N.W. COR. D.L.C. No. 52
FD ANGLE IRON AND
2" BEARING TREES
WEST - 708.20 = WEST - 802.9 (Deed)
ROBERT TRIMBLE D.L.C. No. 52

FILED
RECEIVED
JAN 5 1954
COUNTY SURVEYOR
DOUGLAS COUNTY, ORE.

Arthur R. Evans
COUNTY SURVEYORS FILE DATA
DO NOT REMOVE FROM OFFICE