

COUNTY SURVEYORS FILE
DO NOT REMOVE FROM FILE

SURVEY OF SECTION 23, T 28 S, R 3 W, W.M.

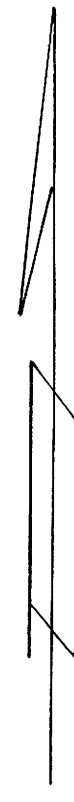
SURVEYED FOR: U.S. PLYWOOD CORP.
SURVEYED BY: T.E. SHRUM, JR.

DECEMBER, 1960
SCALE: 1" = 500'

FILED
RECEIVED

FEB '7 1961

COUNTY SURVEYOR
DOUGLAS COUNTY, ORE.



Std. Cor. 13,14,23
 Fd.: 6" x 12" x 14" Stone
 36" Hem - N64°W - 42.9' (Stump)
 42" Fir - N34°E - 32.3' (Stump)
 42" Fir - S55°E - 41.6' (Stump)
 Set: 3/4" x 36" Iron Rod
 42" Fir - N15°30'E - 32.6' (Stump)
 36" Hemlock - N66°W - 42.6' (Stump)
 8" Yew - S12°E - 96.0'

1/4 Cor. S14
 Fd.: 24" Hem. - S60°W - 12.5' (Down and rotten)
 12" Cedar - N40°E - 26.4'
 Set: 3/4" x 36" Iron Rod
 12" Hemlock - N87°E - 29.0'
 10" Yew - N60°30'W - 18.0'

TEL
 C.C. 22,23:
 Fd. Stone 6"x10"x15"
 26" Hem. - S38°E - 39.0'
 Set: 3/4" x 36" Iron Rod
 10" Hem. - S37°W - 30.4'
 60" Fir - N18°E - 81.5' (Stump)

NI/16 S22 23:
 Set: 3/4" x 36" Iron Rod
 21" Hem. - N28°E - 28.4'
 10" Hem. - S36°W - 37.6'

1/4 Cor. S.22 23:
 Fd. Stone 7"x11"x14"
 12" Fir - S39°W - 19.1'
 16" Fir - N77°W - 10.6'

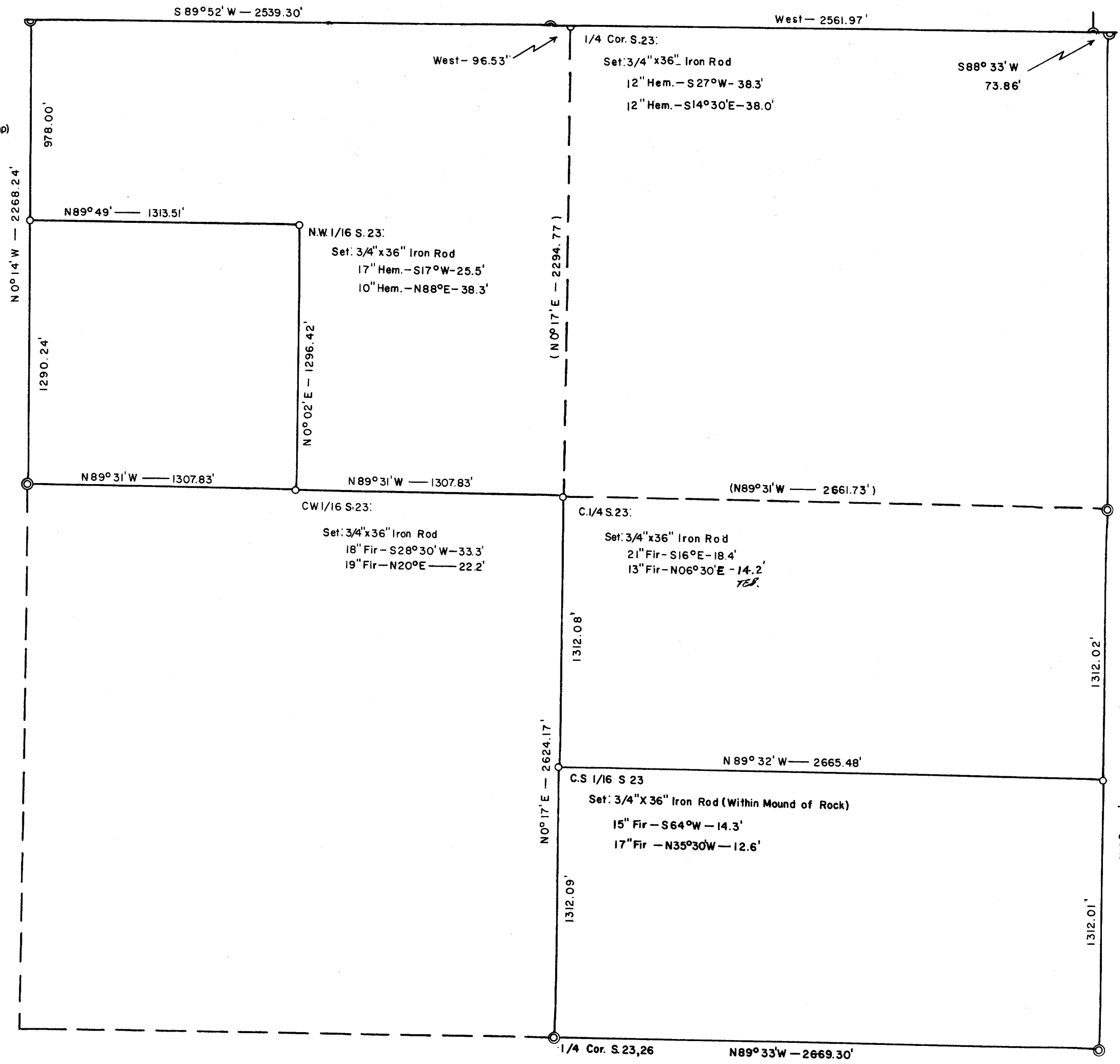
C.C. 23,24:
 Fd. Stone 6"x6"x11"
 18" Fir - S27°E - 8.6' (Down)
 22" Fir - S52°W - 42.5' (Stump)
 Set: 3/4" x 36" Iron Rod
 5" Yew - S01°30'W - 33.6'
 15" Fir - N85°E - 64.5'
 15" Fir - S24°30'E - 58.8'

1/4 Cor. 23 24:
 Fd. 13" Yew - N79°E - 31.2'
 56" Fir - West - 13.7'
 Set: 3/4" x 36" Iron Rod
 12" Yew - N48°W - 58.0'
 13" Yew - N79°E - 31.2' (Rescribed)

S. 1/16 S 23, 24
 Set: 3/4" x 36" Iron Rod
 23" Hem. - S34°W - 17.4'
 8" Hem. - N63°E - 14.5'

FD.: 12" Fir - S41°E - 40.9' (Down and rotten)
 26" Fir - N01°W - 27.0'
 Set: 3/4" x 36" Iron Rod
 18" Fir - N19°E - 31.0'
 18" Fir - N86°W - 26.5'
 6" Fir - S37°30'E - 39.7'

FD.: 6" x 10" x 14" Stone
 26" Hemlock - S14°E - 15.2'
 12" Hemlock - S49°W - 37.0'
 40" Cedar - N70°W - 33.8'
 Set: 3/4" x 36" Iron Rod
 6" Hemlok - N43°E - 27.4'



COUNTY SURVEYORS FILE
DO NOT REMOVE FROM FILE