

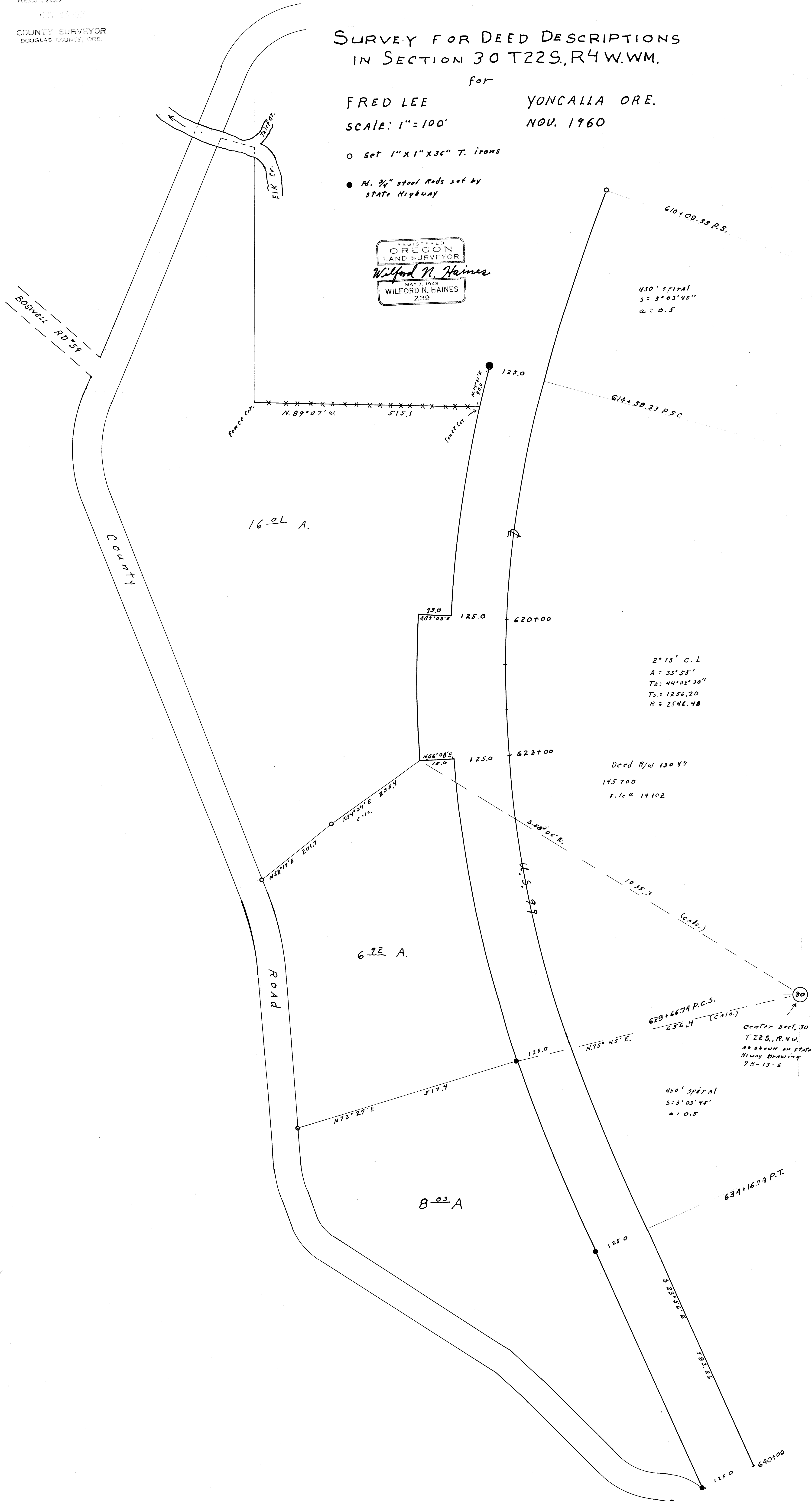
# SURVEY FOR DEED DESCRIPTIONS IN SECTION 30 T22S, R4W.WM.

For  
**FRED LEE**                      **YONCALLA ORE.**  
SCALE: 1"=100'                      **NOV. 1960**

- set 1" x 1" x 36" T. irons
- 1/4" steel Rods set by STATE Highway



BOSWELL RD 54



450' SPIRAL  
S = 3° 03' 45"  
a = 0.5

610+09.33 P.S.  
61A+59.33 P.S.C

16<sup>01</sup> A.

2° 15' C.L.  
A = 33° 55'  
TA = 44° 02' 30"  
TS = 1256.20  
R = 2546.48

Deed R/W 13047  
145700  
F.L.C. # 19102

6<sup>92</sup> A.

629+66.74 P.C.S.  
656.4 (Calc.)

CENTER SECT. 30  
T22S., R.4W.  
AS SHOWN ON STATE  
HIGHWAY DRAWING  
78-13-6

450' SPIRAL  
S = 5° 03' 45"  
a = 0.5

8<sup>03</sup> A.

634+16.74 P.T.