

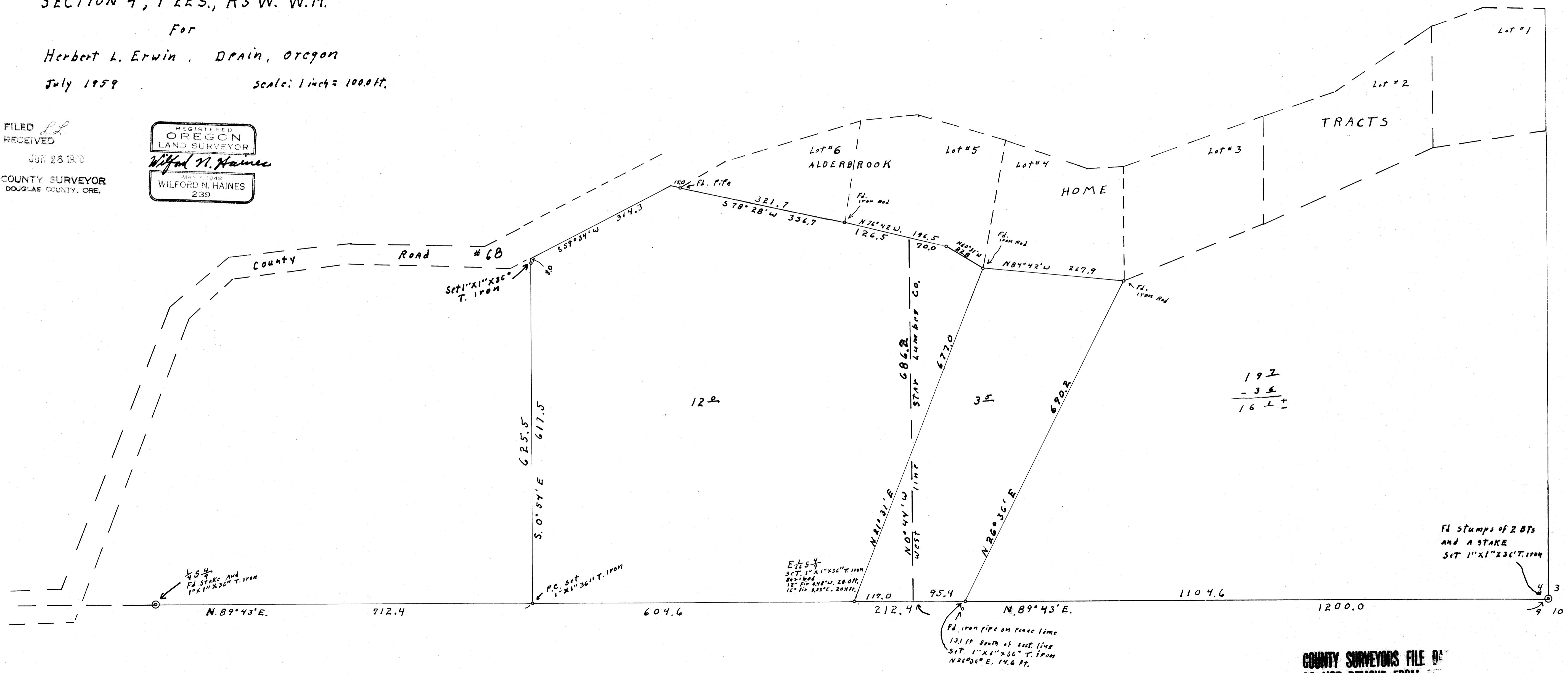
COUNTY SURVEYORS FILE  
DO NOT REMOVE FROM

SURVEY FOR DEED DESCRIPTIONS  
SECTION 4, T22S., R5W. W.M.

For  
Herbert L. Erwin, Drain, Oregon  
July 1959 scale: 1 inch = 100.0 ft.

FILED *LL*  
RECEIVED  
JUN 28 1960  
COUNTY SURVEYOR  
DOUGLAS COUNTY, ORE.

REGISTERED  
OREGON  
LAND SURVEYOR  
*Wilford N. Haines*  
MAY 7 1948  
WILFORD N. HAINES  
239



197  
- 36  
---  
161

Fd stumps of 2 BTs  
and a STAKE  
SET 1"X1"X36" T. IRON

Fd. iron pipe on fence line  
131 ft south of sect. line  
Set 1"X1"X36" T. IRON  
N26°36'E. 14.6 ft.

COUNTY SURVEYORS FILE  
DO NOT REMOVE FROM