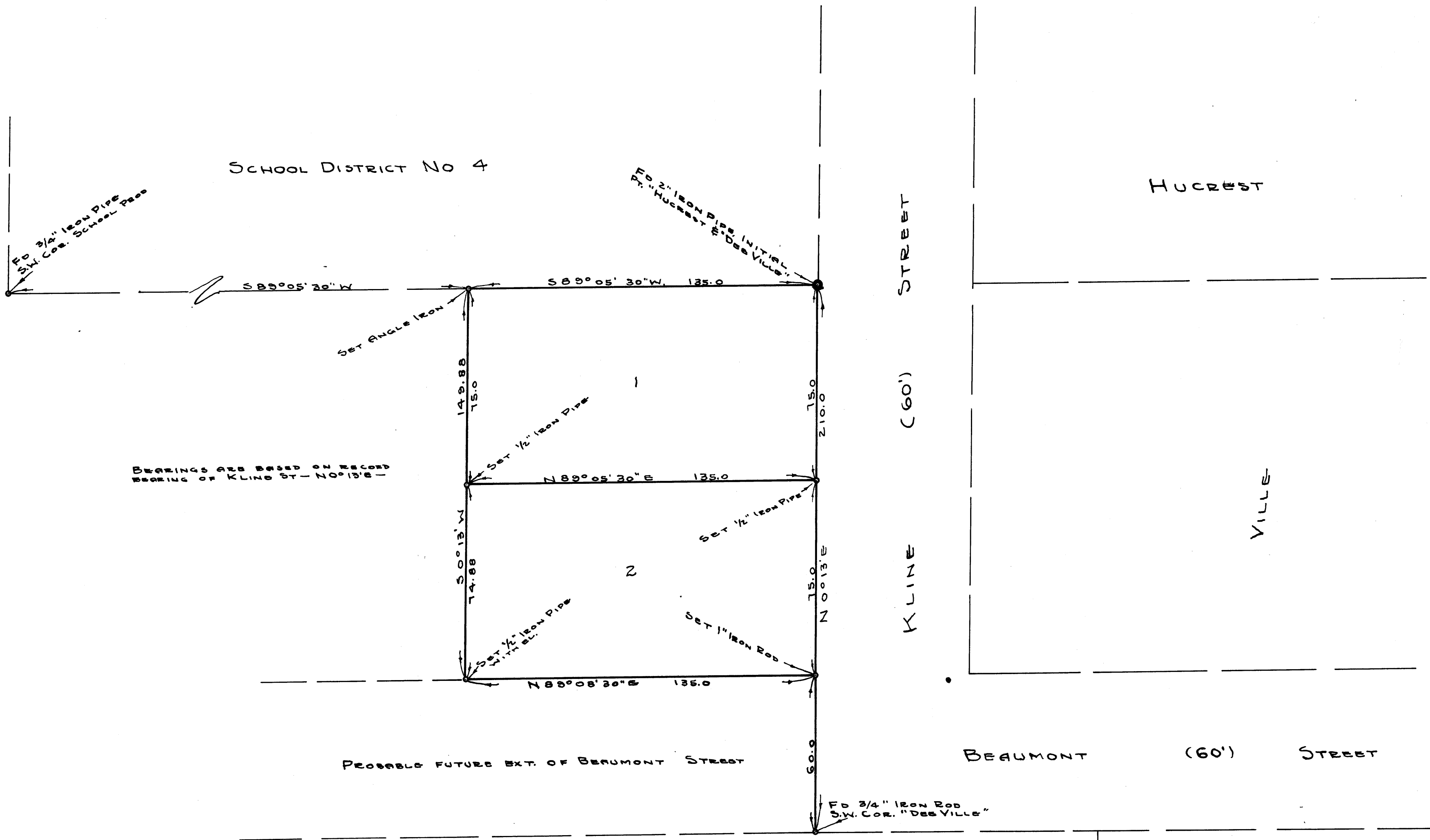


COUNTY SURVEYORS FILE DATA
DO NOT REMOVE FROM OFFICE



MAP OF SURVEY
FOR DEED DESCRIPTIONS
IN J. LENHERR D.L.C. No. 52.
SECTION 11, T27S, R6W, W.M.
DOUGLAS COUNTY, ORE.

EVANS, MURDOCK AND GODFREY
ENGINEERING, TIMBER CRUISING & SURVEYING
ROSEBURG, OREGON

SURVEYED JUNE 1, 1955, FOR R. KOEHN
SCALE 1" = 30'



COUNTY SURVEYORS FILE DATA
DO NOT REMOVE FROM OFFICE

FILED
RECEIVED
JUL 11 1955
COUNTY SURVEYOR
DOUGLAS COUNTY, ORE.